

Marie Skłodowska-Curie Actions

Opportunities for scientific cooperation



*Eugenia Shadlova
French National Contact Point
& Programme Committee Delegate
Marie Skłodowska-Curie Actions
Ministry of Higher Education and Research*





Marie Skłodowska-Curie Actions : opportunities for French-Brazilian cooperation



- ✓ Develop joint research projects through the **mobility of postdoctoral researchers**
- ✓ Create common doctoral/postdoctoral training programs **in areas strategic for both countries**
- ✓ Put in place **joint/double doctoral degrees**
- ✓ Encourage **two-ways researchers mobility** and transfer of knowledge
- ✓ Benefits for both **Doctoral Candidates** and **Participating Organisations**
- ✓ Put in place attractive programs to train top-level young specialists
- ✓ Offer **training in research-related skills** and competences for **innovation and long-term employability**
- ✓ Enhance **cooperation and knowledge transfer between** institutions



MSCA in Horizon Europe



MSCA Key features



Researchers'
training, skills and
career development



Excellent research
(bottom-up approach)



**International,
cross-sectoral &
interdisciplinary
mobility**



**Attractive working
and employment
conditions**



Structuring impact
(on organisations)



**Strong collaboration
with industry and
SMEs**

Eligible participants

Academic sector



- ✓ Higher Education Institutions
- ✓ Research organisations
- ✓ International European Interest organisations



Non-academic sector

- ✓ Any other organisation (entreprises, SMEs, NGOs, museums, hospitals, public administrations etc.)

European member states:

27 countries

Associated countries:

Albania, Armenia, Bosnia and Herzegovina, Canada (for Pillar II only), Georgia, Iceland, Israel, Faroe Islands, Kosovo, Northern Macedonia, Moldova, Montenegro, Norway, Serbia, Tunisia, Turkey, Ukraine, United Kingdom

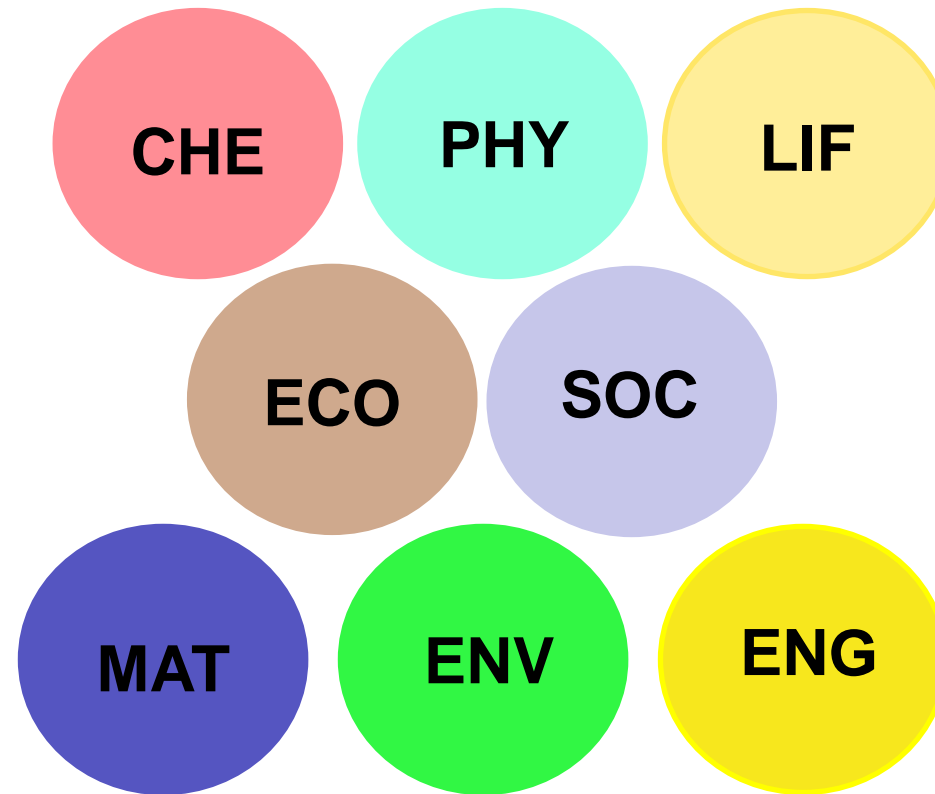
Third countries (the rest of the World):

- ✓ High-income non-EU countries: may participate but may not directly receive funding.
- ✓ Low- and middle-income third countries: can participate in Horizon Europe and receive funding.

See the full list of third countries and associated states : [Link](#)



- Projects are evaluated by pairs, in 8 scientific panels:



The Actions

The MSCA have 5 main actions

Doctoral Networks

implement doctoral programmes (including joint doctorates and industrial doctorates) **by international partnerships** of organisations from different sectors. They train highly-skilled doctoral candidates, stimulate their creativity, enhance their innovation capacities and boost their employability in the long-term.

Postdoctoral Fellowships

support researchers' careers and foster excellence in research and innovation. Researchers holding a PhD can carry out their research activities, acquire new skills and develop their careers abroad, whilst developing competences in non-academic sectors and working within interdisciplinary teams.

Staff Exchanges

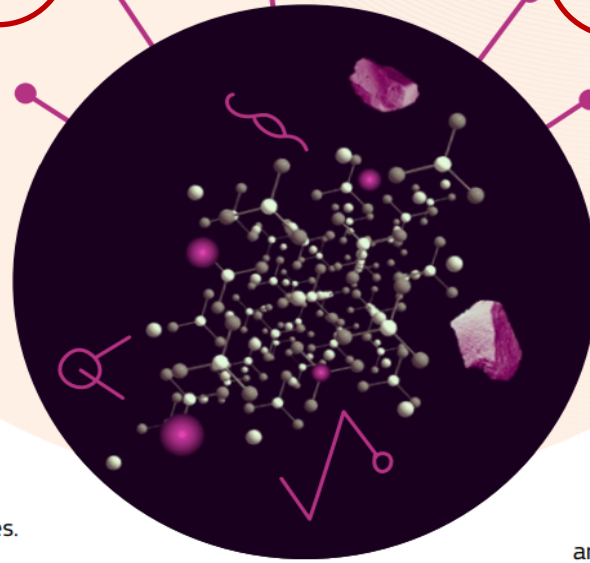
encourage short-term international and inter-sectoral exchanges of research and innovation staff through sustainable, collaborative projects in Europe and beyond. By doing so, they enhance knowledge and skills transfer and increase organisations' research and innovation capacities.

MSCA and Citizens

brings research and researchers closer to children, families and the public at large through the European Researchers' Night - the annual research communication and promotion event taking place at the end of September across EU Member States and Horizon Europe Associated Countries.

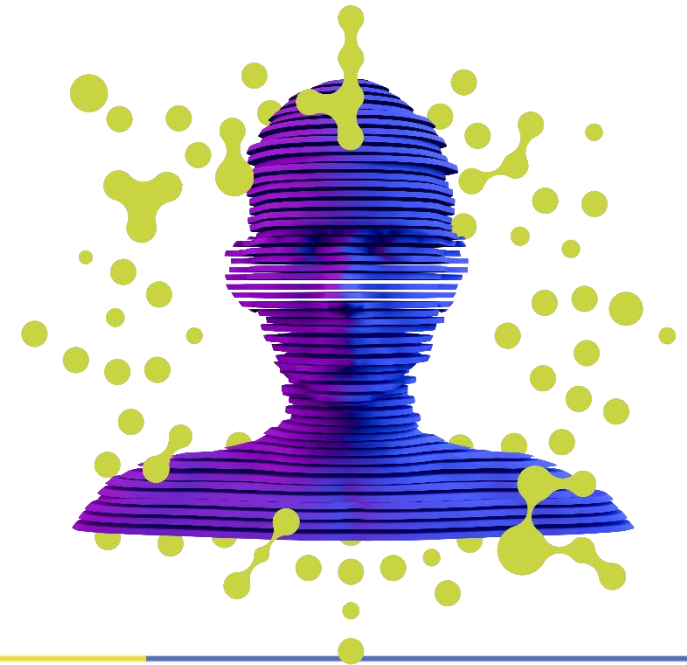
COFUND

co-finances regional, national and international doctoral and postdoctoral programmes for researchers' training and career development. The COFUND action spreads MSCA's best practices by setting high standards and excellent working conditions, and boosts training and international, interdisciplinary and inter-sectoral mobility.





MSCA Doctoral Networks



What are Doctoral Networks?

Multi-beneficiaries' actions aiming to set up **doctoral training programmes**, international, intersectoral and interdisciplinary, in a frame of a common R&I project.

3 implementation modes:

DN Regular (DN) : Training in academia and/or industry

DN Joint Doctorates (DN-JD): Joint collaborations between academia and industry with joint inter-sectoral supervision

DN Industrial Doctorates (DN-ID): Joint collaborations in higher education leading to a joint/multiple doctoral degree with joint selection and supervision

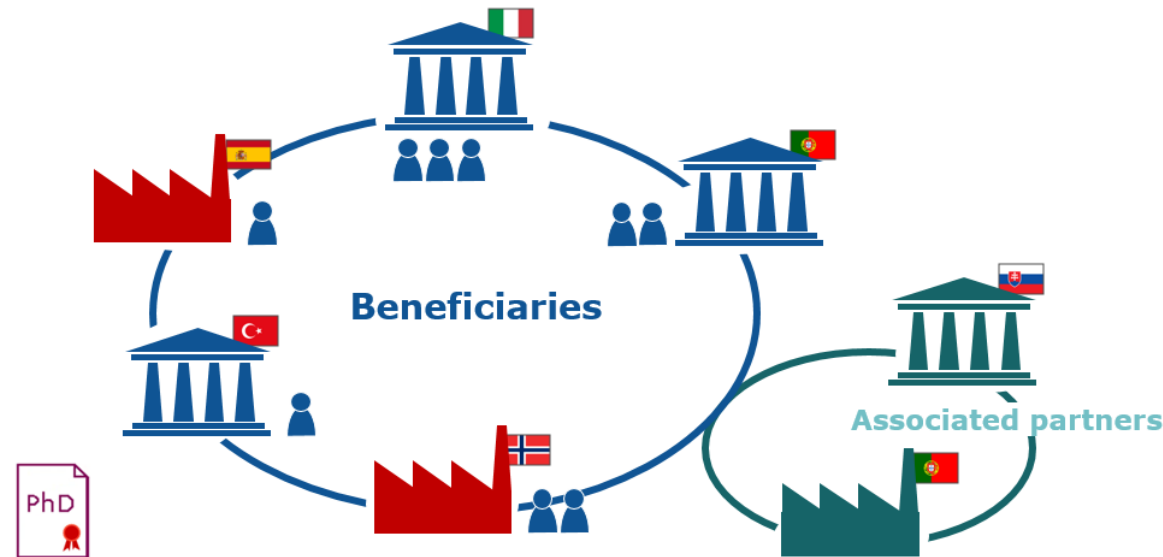
Who can participate?

An international consortium of organisations from academic et non academic sector
(universities, research centers, entreprises, associations etc.)

Bénéficiaires

≥ 3 independent legal entities
located in 3 different EU
Members States or Horizon
Europe Associated Countries
Recruit 1 doctoral candiate
each

Countries eligible for EU
funding



Associated Partners

No minimum or maximum limit

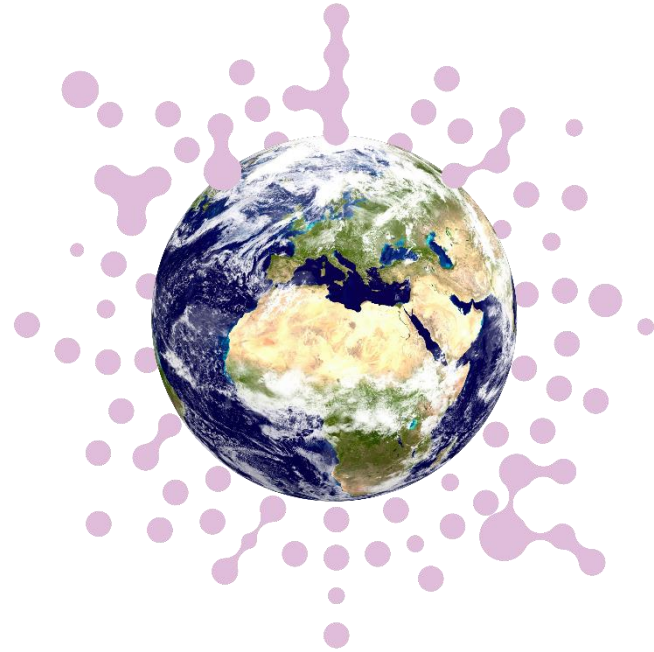
Complete the training
program:

- *Secondment*
- Contribution to network-wide training activities

- ✓ **Doctoral candidates** : no doctoral degree at the date of recruitment
- ✓ **Any nationality**
- ✓ **Mobility rule**: not have resided or carried out main activity in the country of the recruiting beneficiary for more than 12 months in the 36 months immediately before their recruitment date.

Doctoral candidates are recruited following an **open, merit-based and transparent recruitment** process. Open positions are published on the [Euraxess Jobs platform](#).

Secondments worldwide



Maximum **1/2** of the contract duration

Actions Marie Skłodowska Curie	Researcher [person months]					Institution [person months]	
	Living allowance	Mobility allowance	Family allowance	Long-term leave Allowance	Special needs allowance	Research, training and networking costs	Management and indirect costs
Postdoctoral Fellowships	4 250 €* 	710 €	660 €	4 960 € x % covered by the beneficiary	Unit requested x number of months	1 600 €	1200 €

Funding:

- Covers salary of doctoral candidates + institutional costs
- Maximum 540 person-months of doctoral candidates (15 DCs recruited for 36 months each)

*Country correction coefficients apply to the Living allowance



MSCA Postdoctoral Fellowships



Two types of fellowships :

European Fellowships (EF)

- HI located in a Member State or Associated Country
- Duration : 12 to 24 months

Global Fellowships (GF)

- Mobility towards a third country
- 24 to 36 months (including a mandatory 12 months return phase in a Member State or Associated Country)

European Fellowships (EF)

A researcher may submit only
one proposal per call

For fellows
coming to
or
moving within
Europe



12-24 months



... before call deadline

MOBILITY RULE

Not resided, worked, studied > 12
months
in the 3 years in the country of the
beneficiary

Global Fellowships (GF)



12-24 months



12 months



**For fellows from Europe going to TC
and then
returning to Europe**

Global Fellowships (GF)

...before call deadline

1. RESEARCHER RULE

Not If not European, the researcher must have resided at least 5 consecutive years in Europe before leaving (long term residency)



2. MOBILITY RULE

Not resided, worked, studied > 12 months in the 3 years in the country of the **Third Country partner** organisation (outgoing = phase 1)

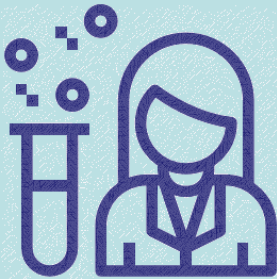
A world map with two large green arrows pointing from Europe towards the right. The top arrow is labeled 'Phase 1 - Outside of EU (up to 24 months)' and the bottom arrow is labeled 'Phase 2 - Researcher returns to EU (12 months)'. A dashed red line outlines the European continent.

Phase 1 - Outside of EU
(up to 24 months)

Phase 2 - Researcher returns to EU
(12 months)

MSCA Postdoctoral Fellowships : main features

Which researchers?



Postdoctoral Researchers

- Have successfully defended a PhD at the call deadline
- <8 years of research experience after the PhD



Any Nationality *

** (residency condition for nationals of non-Member States/Associated countries for Global fellowships)*

Which organisations?



Academic sector

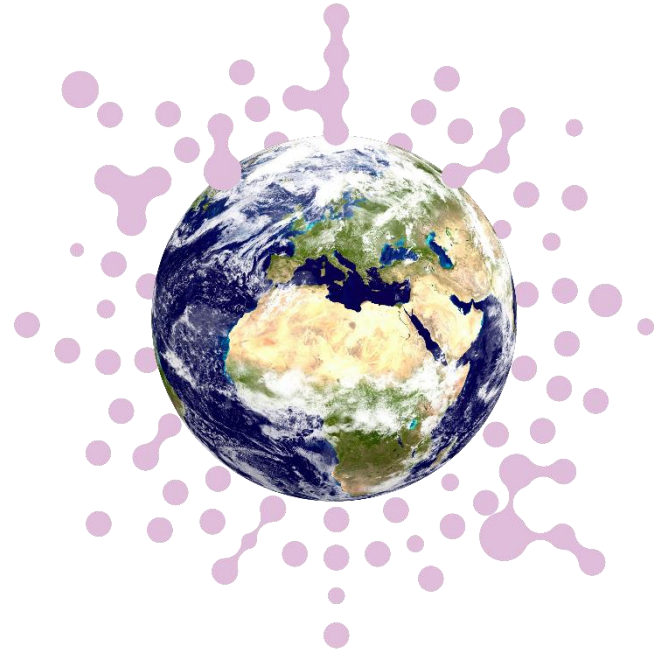
- Higher education establishments (awarding academic degrees)
- Non-profit research organisations (primary mission research)
- International European interest organisations (e.g. CERN, EMBL)



Non-academic sector

- Any entity not included in the academic sector:
- e.g. large companies, SMEs, NGOs, museums, hospitals, international organisations (e.g. UN, WHO)

Secondments worldwide



Maximum **1/2** of the contract duration

Optional placements in non-academic sector



- **Max 6 additional months at the end of your project**
- **In EU Member State or Horizon Europe Associated Country**

Actions Marie Skłodowska Curie	Researcher [person months]					Institution [person months]	
	Living allowance	Mobility allowance	Family allowance	Long-term leave Allowance	Special needs allowance	Research, training and networking costs	Management and indirect costs
Postdoctoral Fellowships	6 350 €*	710 €	660 €	7 060 € x % couvert par le bénéficiaire	Unité demandée x (1/nombre de mois)	1 000 €	650 €

*Country correction coefficients apply to the Living allowance



How to apply?



Step 1 Calls for proposals are published on the European Commission Funding and Tenders Portal. Check your eligibility: read carefully the call text and the Guide for Applicant



Horizon Europe Programme

Guide for Applicants

Marie Skłodowska-Curie Actions – Postdoctoral Fellowships (PF)

Version 1.0 - 2021
22 June 2021

Funding & tender opportunities
Single Electronic Data Interchange Area (SEDIA)

SEARCH FUNDING & TENDERS ▼ HOW TO PARTICIPATE ▼ PROJECTS & RESULTS WORK AS AN EXPERT SUPPORT ▼

• Legal Entity and Bank Account validations tasks will experience issues in the Grant Management Services on Monday 28 March 2022 between 20:00 and 21:30 CET.
• The Identity, Bank Account, Contracts & Payments functionalities in the Experts Area of the F&T Portal will be unavailable Monday 28 March 2022 between 20:00 and 21:30 CET.

Find calls for proposals and tenders

Search calls for proposals and tenders by keywords, programmes... Search

EU Programmes

Asylum, Migration and Integration Fund (AMIF)	Border Management and Visa Instrument (BMVI)	Customs Control Equipment Instrument (CCEI)	Connecting Europe Facility (CEF)	Citizens, Equality, Rights and Values Programme (CERV)	Creative Europe (CREA)
---	--	---	----------------------------------	--	------------------------

Step 2 Identify your future host institution and your supervisor, and get in contact with them (both the supervisor and the grants support office)

Step 3 Register your proposal through the call page, by using the Participant Identification Code (PIC) of your future Host Institution

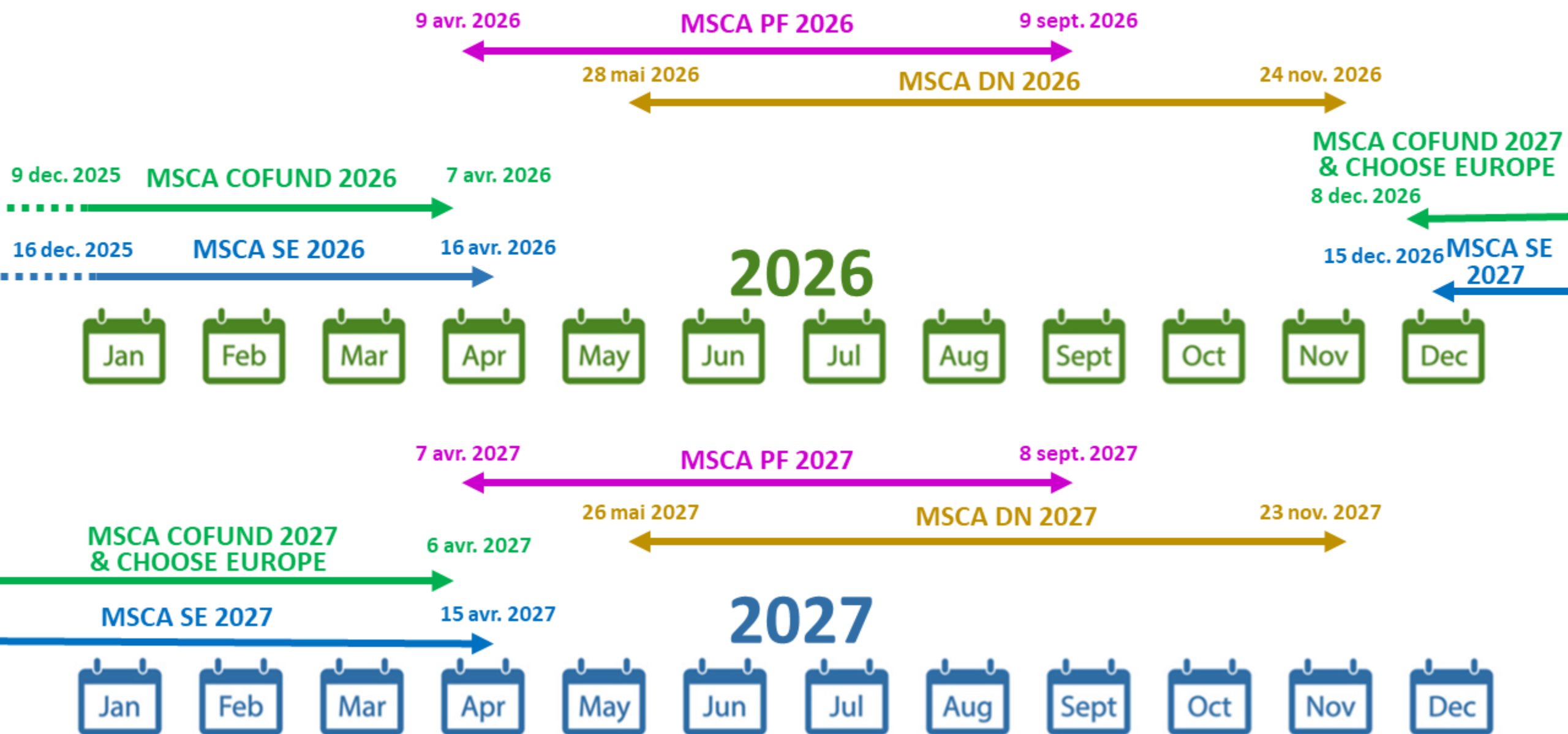
The screenshot shows a web portal interface with a left-hand navigation menu and a main content area. The navigation menu includes: General information, Topic description, Destination, Conditions and documents, Partner search announcements, Submission service, Topic related FAQ, Get support, and Call updates. The main content area is titled "Searches of partners to collaborate on this topic" and displays a large number "40" with a "View / Edit" button. Below this, a text block explains that LEARs, Account Administrators, or self-registrants can publish partner requests. A red box highlights a "Start submission" button, with a note below it stating: "The submission system is planned to be opened on the date stated on the topic header." Below the submission button is a "Topic related FAQ" section with a search bar and a question: "Under Marie Skłodowska-Curie Postdoctoral Fellowships (MSCA-PF), can a researcher have multiple supervisors within the same host organisation?" The answer states: "There must be only one supervisor per host organisation. The supervisor is the senior researcher appointed at the beneficiary to supervise the researcher throughout the whole duration."

Step 4 Download the proposal Template (Part B), write your project proposal with the support of your supervisor and your Host Institution
EU Grants Office

The screenshot shows the European Commission website for funding and tender opportunities. The header includes the European Commission logo and the text 'Funding & tender opportunities Single Electronic Data Interchange Area (SEDIA)'. Below the header is a navigation bar with a home icon and menu items: 'SEARCH FUNDING & TENDERS', 'HOW TO PARTICIPATE', 'PROJECTS & RESULTS', 'WORK AS AN EXPERT', and 'SUPPORT'. The main content area is divided into two sections: 'Part A (structured data)' and 'Part B (description of action)'. Part A is represented by a stack of forms with a 'new budget' badge, listing sections like 'General information', 'Participants & contacts', 'Ethics', and 'Call-specific questions'. Part B is represented by a document icon with the text '10 page limit' next to it.

Step 5 Fill in administrative forms online (Part A) with the support of your EU Grants Office, upload your proposal (Part B) in PDF, and submit it before the call deadline (9 September 2026)

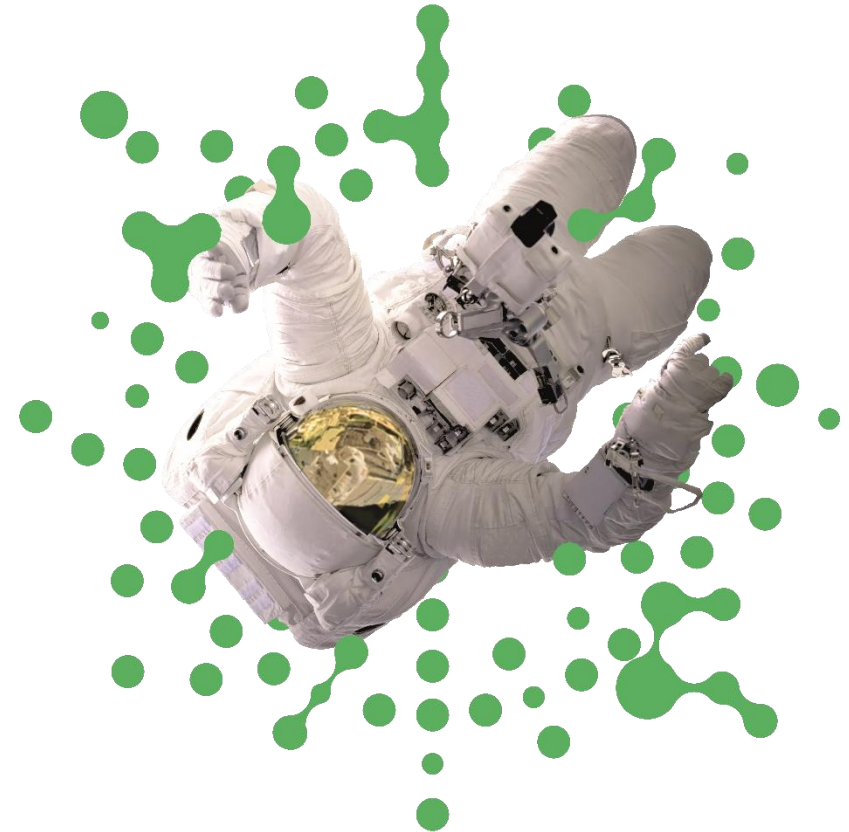
MSCA CALL CALENDAR 2026-2027



National Contact Points

French MSCA NCP team : [pcn-
mariescurie@recherche.gouv.fr](mailto:pcn-mariescurie@recherche.gouv.fr)

Brazilian MSCA NCP : Flavia Cerqueira
flaviac.confap@gmail.com



- French National MSCA portal : <https://www.horizon-europe.gouv.fr/amsc>
- Marie Skłodowska-Curie Actions Website
https://ec.europa.eu/research/mariecurieactions/node_en
- Funding and Tenders Portal (applications, documents, partner search)
<https://ec.europa.eu/info/funding-tenders/opportunities/portal/screen/programmes/horizon>
- Euraxess (PhD and postdoctoral vacancies, more information)
<https://euraxess.ec.europa.eu/>
- National Contact Points <https://ec.europa.eu/info/funding-tenders/opportunities/portal/screen/support/ncp>
- Research Enquiry Service https://ec.europa.eu/info/research-and-innovation/contact/research-enquiry-service-and-participant-validation_en
- MCAA (Marie Curie Alumni association) <https://www.mariecuriealumni.eu>