



MSCA

Marie Skłodowska-Curie Actions

Developing talents, advancing research



Staff Exchanges

Brito FERREIRA

Session d'information nationale

4 avril 2025

European Research Executive Agency

Marie Skłodowska-Curie Actions

The MSCA have **5** main actions

Doctoral Networks

implement doctoral programmes (including joint doctorates and industrial doctorates) **by international partnerships** of organisations from different sectors. They train highly-skilled doctoral candidates, stimulate their creativity, enhance their innovation capacities and boost their employability in the long-term.

Postdoctoral Fellowships

support researchers' careers and foster excellence in research and innovation. Researchers holding a PhD can carry out their research activities, acquire new skills and develop their careers abroad, whilst developing competences in non-academic sectors and working within interdisciplinary teams.

Staff Exchanges

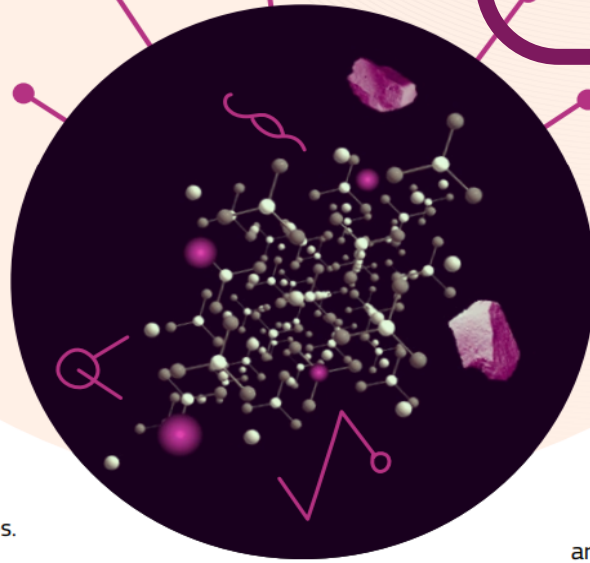
encourage short-term international and inter-sectoral exchanges of research and innovation staff through sustainable, collaborative projects in Europe and beyond. By doing so, they enhance knowledge and skills transfer and increase organisations' research and innovation capacities.

MSCA and Citizens

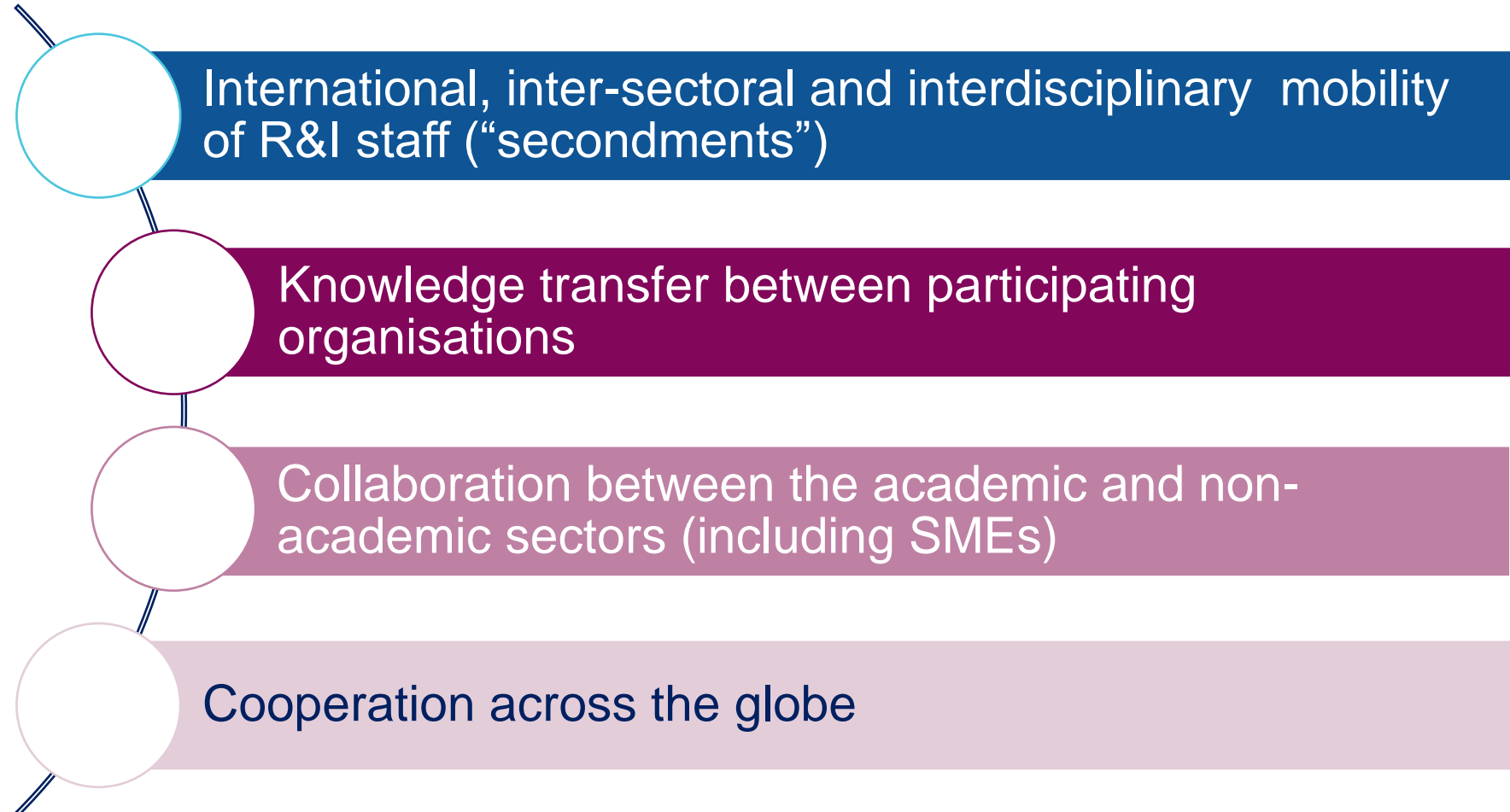
brings research and researchers closer to children, families and the public at large through the European Researchers' Night - the annual research communication and promotion event taking place at the end of September across EU Member States and Horizon Europe Associated Countries.

COFUND

co-finances regional, national and international doctoral and postdoctoral programmes for researchers' training and career development. The COFUND action spreads MSCA's best practices by setting high standards and excellent working conditions, and boosts training and international, interdisciplinary and inter-sectoral mobility.



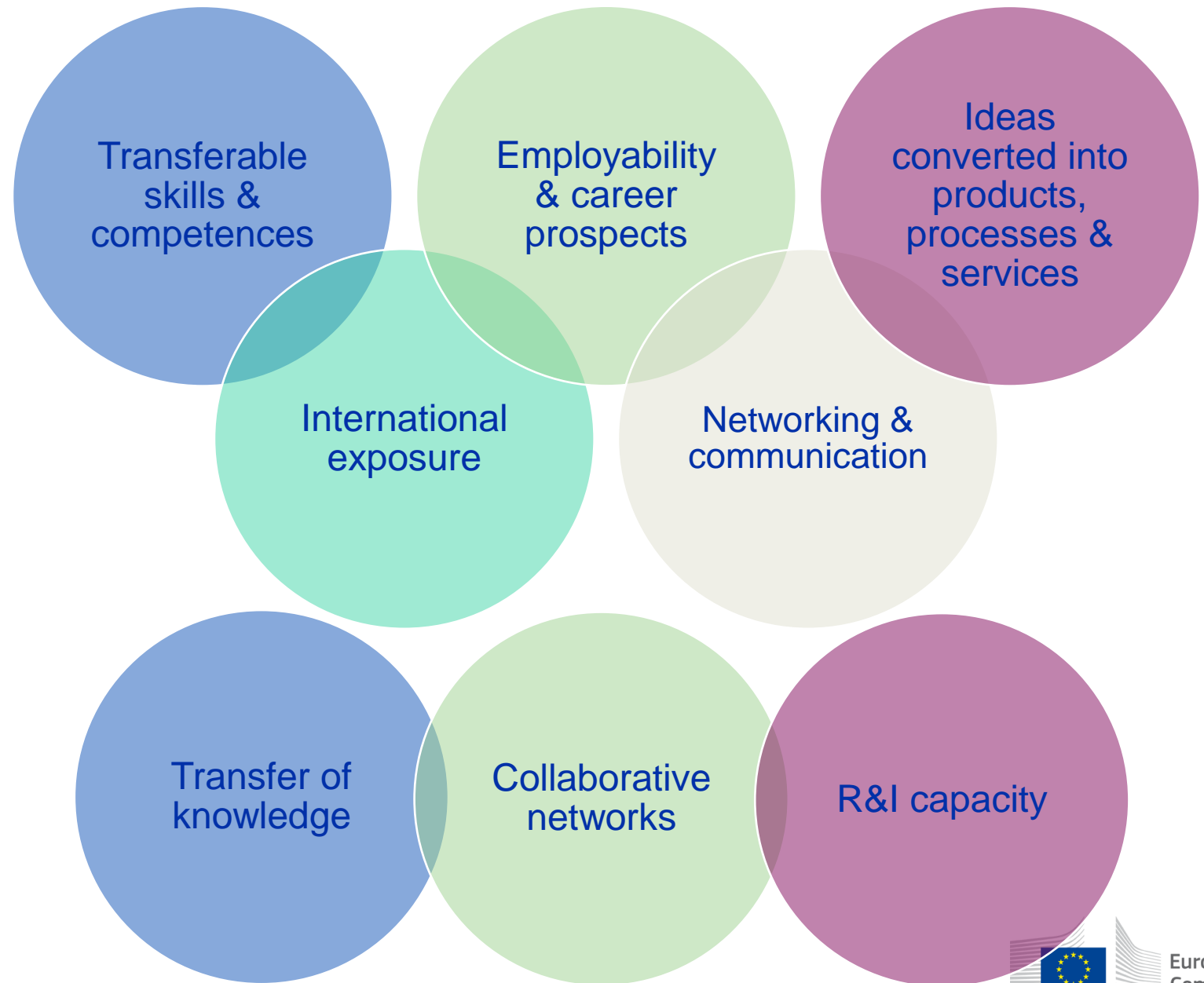
Objectives



Added value

Staff members

Organisations



Key features



BOTTOM UP
scientific panels



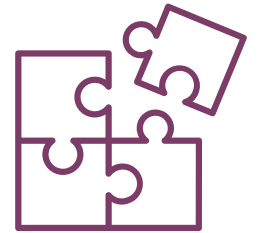
TOP UP ALLOWANCE
5010 € unit cost



SECONDMENTS
1-12 months per staff
Interdisciplinary
Intersectoral
International



DURATION
4 years
360 PM



SYNERGY
EU grants
Not MSCA*

Eligible staff



Any type of staff involved in R&I activities (researchers, administrative staff, managerial staff, technical staff)

Each staff member is seconded for a period of **1 to 12 months** (may be split into several stays)

Seconded staff members

Researchers at any career stage (e.g. from doctoral candidates to postdoctoral researchers)

Staff needs to be devoted **full-time** to the action during the secondment



Actively engaged in research and/or innovation activities for at least **1 month** prior at the sending institution

After the secondment, staff should **return to their sending institution**

Eligible participants

Academic sector

Consortium of min. **3 legal entities in 3 different countries**, 2 of which in a different EU Member State or HE Associated Country



Non-academic sector

If all organisations from the **same sector**, there must be at least 1 organisation from a non-associated Third Country*

* Secondments within EU MS or HE AC must be between different sectors (between academic and non-academic), except for interdisciplinary secondments, which must be limited to a maximum of 1/3 of the total implemented months.

Participants and roles



Beneficiary

Send/Host secondments
Manage EU funding
Sign CA



EU Associated partner

Host secondments



Third country Associated partner

Eligible for funding



**Third country
Associated partner**
Not Eligible for funding

Eligible exchanges

"HOSTING"
(receiving seconded staff members)

"SENDING"
(sending staff members
from organization)

	Academic organisation in MS/AC (1)	Non-academic organisation in MS/AC (2)	Associated Partners eligible for funding	Associated Partners non-eligible for funding
Academic organisation in MS/AC (1)	1/3	✓	✓	✓
Non-academic organisation in MS/AC (2)	✓	1/3	✓	✓
Associated Partners* eligible for funding	✓	✓	✗	✗
Associated Partners non-eligible for funding	✗	✗	✗	✗

1/3 This symbol refers to same sector secondments up to 1/3 of the total implemented secondments funded by the EU as long as they are demonstrated to be interdisciplinary.

* Associated Partners eligible for funding (see List of Participating Countries in Horizon Europe)

Same-sector secondments in Europe (MS/AC)

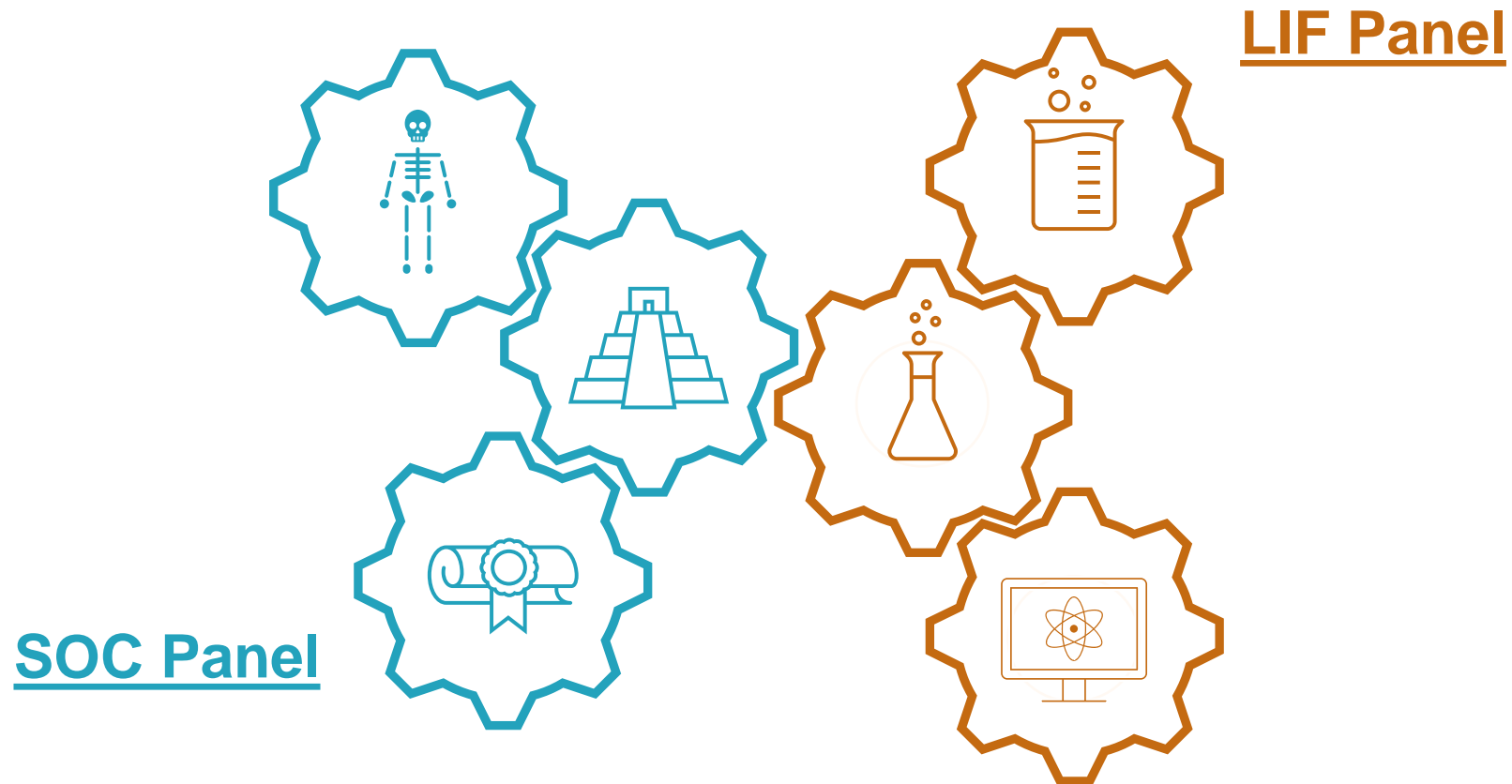


$\leq 1/3$ of the total secondments funded by the EU, if considered **Interdisciplinary**

Interdisciplinary secondments integrate aspects from **two or more different scientific disciplines**.

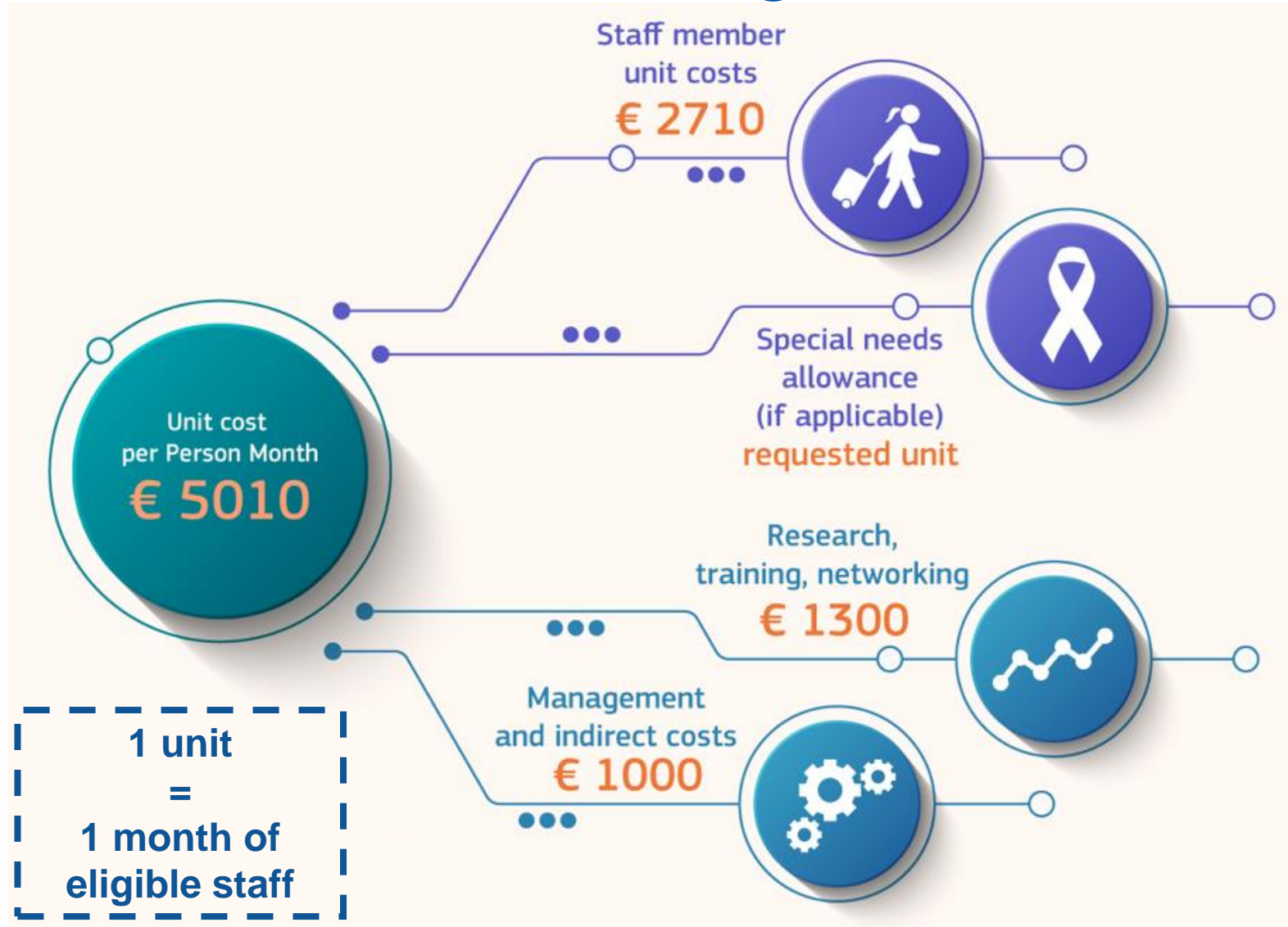
Important: **scientific panels + descriptors/first level MSCA** keywords from proposal form part A (see [REA Website](#))

Interdisciplinary mobility explained



Examples taken from [MSCA SE FAQ](#)

What does Staff Exchanges fund?



MSCA co-funding arrangements



Brazilian National Council of State Funding Agencies - **CONFAP**



Mitacs' Globalink Research Award & **Mitacs'** Accelerate International Program



Indian Council of Scientific and Industrial Research (**CSIR**)



Japan Society for the Promotion of Science **Bilateral Programs/Core-to-Core Program**



Korea-EU Joint Research Programme and **Korea-EU Cooperation Preparation Programme**



Focus on the proposal

Proposal Submission



EU Funding & Tenders Portal

Sign in

- Home
- Funding
- Procurement
- Projects & results
- News & events
- Work as an expert
- Guidance & documents

Search...

Home > Funding > Calls for proposals > MSCA Staff Exchanges 2025

MSCA Staff Exchanges 2025

HORIZON-MSCA-2025-SE-01-01

Topic Call for proposal

Internal navigation

General information

Topic description

Topic updates

Mission

Destination

Conditions and documents

Budget overview

Partner search announcements

General information

Programme

Horizon Europe (HORIZON)

Call

MSCA Staff Exchanges 2025 (HORIZON-MSCA-2025-SE-01)

Type of action

HORIZON-TMA-MSCA-SE HORIZON TMA MSCA Staff Exchanges

Type of MGA

HORIZON Unit Grant [HORIZON-AG-UN]

Open For Submission

Deadline model

single-stage

Opening date

27 March 2025

Deadline date

08 October 2025 17:00:00 Brussels time

Topic description

Apply! <https://ec.europa.eu/info/funding-tenders/opportunities/portal/>



How to find partners?



NETWORKING
EVENTS
(CONFERENCES,
WORKSHOPS, ETC.)



FORMER OR
CURRENT
COLLABORATIONS



JOINT
PROJECTS



FUNDING AND
TENDER
OPPORTUNITIES
PORTAL



MSCA
MATCHMAKING
PLATFORM

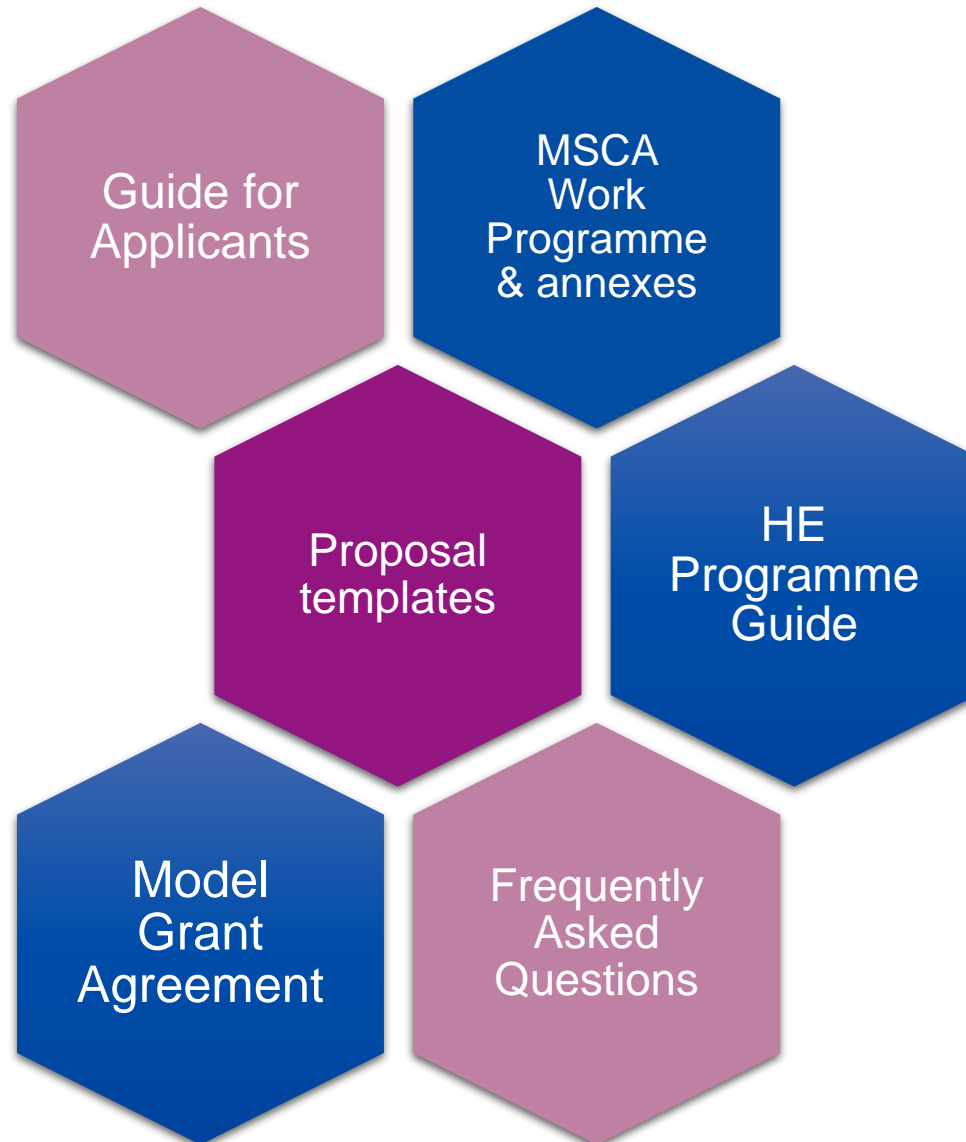


EUROPEAN
ENTERPRISE
NETWORK



NATIONAL
CONTACT
POINT

Reference Documents



Proposal documents



Funding & tender opportunities
Single Electronic Data Interchange Area (SEDIA)



SEARCH FUNDING & TENDERS ▼

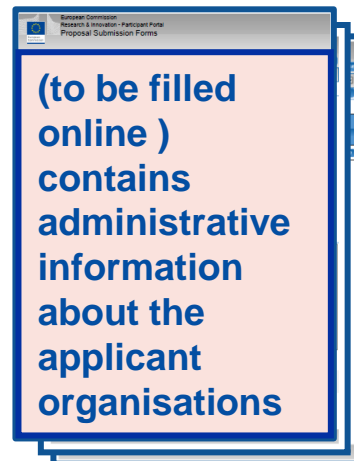
HOW TO PARTICIPATE ▼

PROJECTS & RESULTS

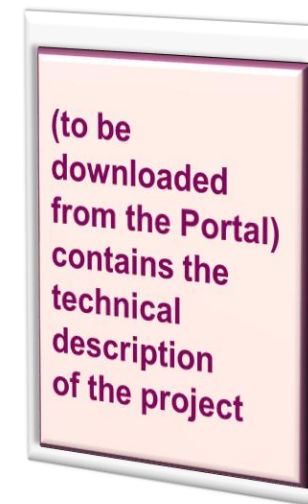
WORK AS AN EXPERT

SUPPORT ▼

Part A (structured data)



Part B (description of action)



Evaluation criteria

Excellence	Impact	Quality and efficiency of the implementation
Quality and pertinence of the project's research and innovation objectives (and the extent to which they are ambitious, and go beyond the state of the art)	Developing new and lasting research collaborations , achieving transfer of knowledge between participating organisations and contributing to improving research and innovation potential at the European and global level	Quality and effectiveness of the work plan , assessment of risks , and appropriateness of the effort assigned to work packages
Soundness of the proposed methodology (including i3 approaches, consideration of the gender dimension and other diversity aspects, and the quality of open science practices)	Credibility of the measures to enhance the career perspectives of staff members and contribution to their skills development	Quality, capacity and role of each participant, including hosting arrangements and extent to which the consortium as a whole brings together the necessary expertise
Quality of the proposed interaction between the participating organisations in light of the research and innovation objectives	<p>Suitability and quality of the measures to maximise expected outcomes and impacts, as set out in the dissemination and exploitation plan, including communication activities</p> <p>The magnitude and importance of the project's contribution to the expected scientific, societal and economic impacts</p>	
50%	30%	20%



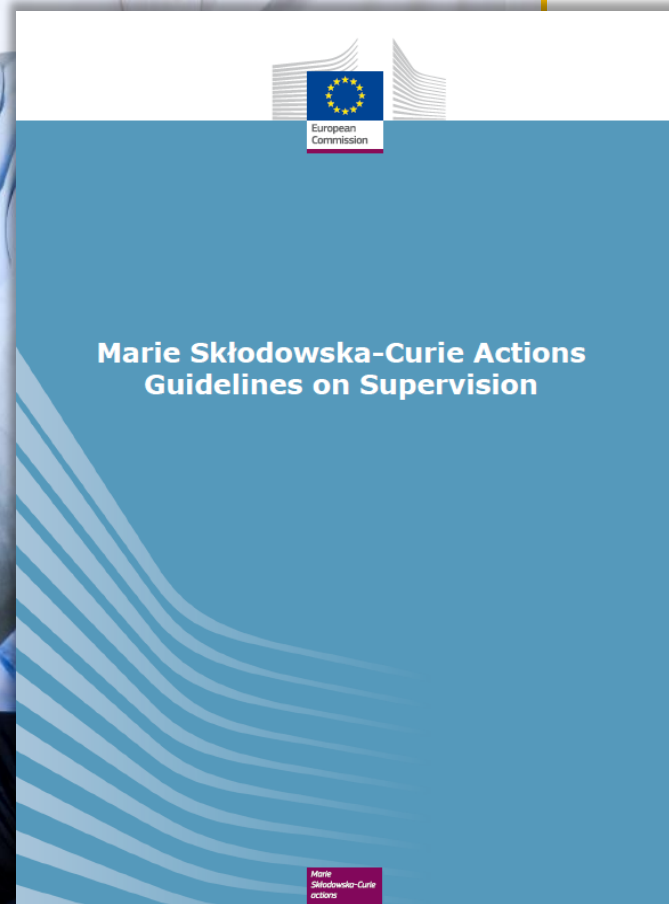
Recommended Guidelines in the HE Work programme

Horizon Europe Work Programme :

*“All MSCA-funded projects are encouraged to follow the recommendations outlined in the **Guidelines for MSCA supervision**”.*

A set of recommendations to be adopted on a best effort basis by participants in the programme – both individuals and institutions – e.g. from research support and career development to well-being, conflict resolution and training for supervisors.

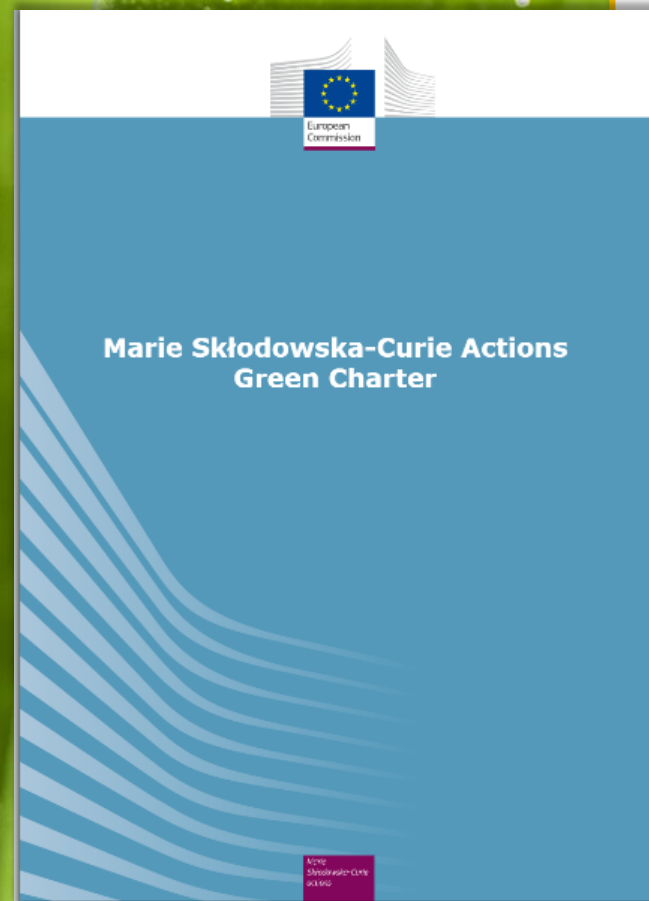
<https://ec.europa.eu/research/mariecurieactions/about-msca/msca-guidelines-supervision>



Recommended Guidelines in the HE Work programme

Horizon Europe Work Programme :
“All MSCA-funded projects are encouraged to address the principles of the **MSCA Green Charter** and implement measures to minimize the environmental footprint of their activities”.

<https://ec.europa.eu/research/mariecurieactions/green-charter>



Tips and tricks

Closely follow the call requirements

Be in line with the action's objectives and expected outcomes

Follow available guidelines

Use the structure provided in the template and address all the evaluation criteria

Highlight the EU dimension

Show that your proposal addresses EU policy priorities and/or societal challenges

Get a second opinion

Have your proposal proof-read by a colleague and pre-screened by your NCP

Sustainability of collaboration

Describe the benefits of cooperation and how they can go beyond this project

**Contact your
National Contact Point
(NCP)**

Next MSCA SE call

Call	2025	
	Opening Closing	Budget (M€)
Staff Exchanges	27 March 2025 8 October 2025	97,7*



**+ 20% more
budget vs 2023**



Questions and answers



Merci!



LinkedIn @REA_research
@MSCAactions



Thank you



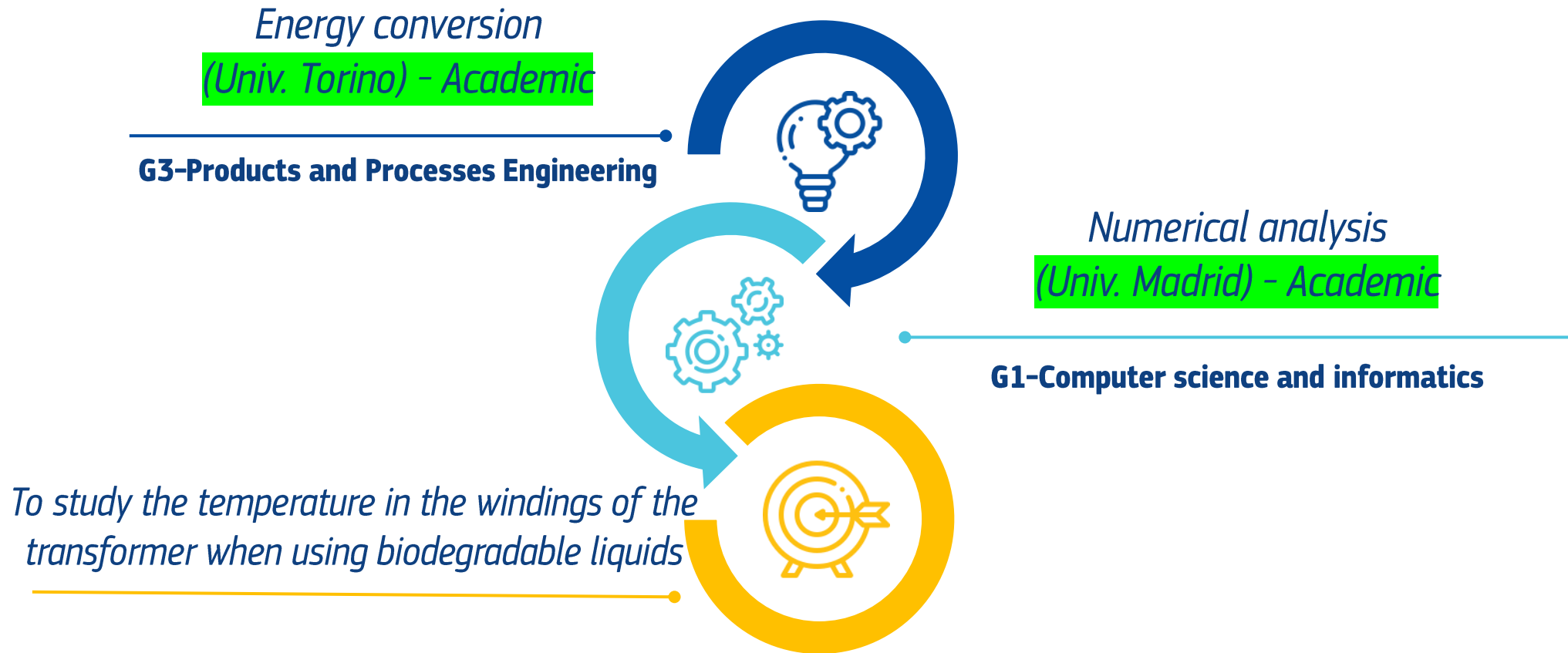
© European Union 2025

Unless otherwise noted the reuse of this presentation is authorised under the [CC BY 4.0](https://creativecommons.org/licenses/by/4.0/) license. For any use or reproduction of elements that are not owned by the EU, permission may need to be sought directly from the respective right holders.

Slide 6;10 elements concerned, source: <https://www.freepik.com>

Slide 13: elements concerned, source: <https://www.freeflagicons.com>

Interdisciplinary mobility explained –



Interdisciplinary mobility explained –



Mechanisms of pain

(Univ. Louvain) - Academic

L5-Neurosciences and neural disorders

Molecular and cellular neuroscience

(Univ. Barcelona) - Academic

L5-Neurosciences and neural disorders



To study neuroimaging of tumour liver cells