

MSCA
Marie Skłodowska-Curie Actions
Developing talents, advancing research

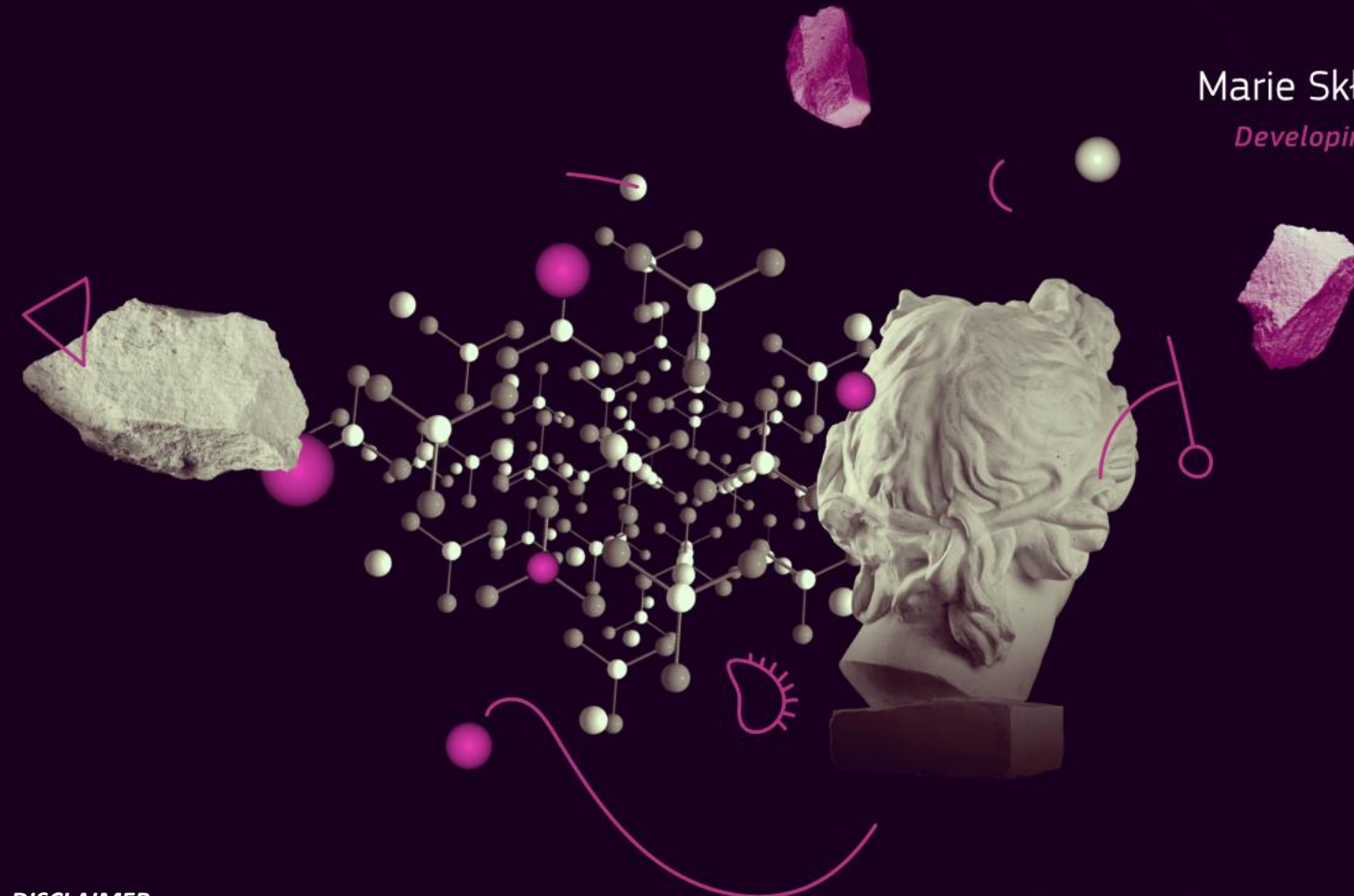


MSCA Postdoctoral Fellowships

Blagovesta Cholova, PhD

European Research Executive Agency (REA)

15 April 2025

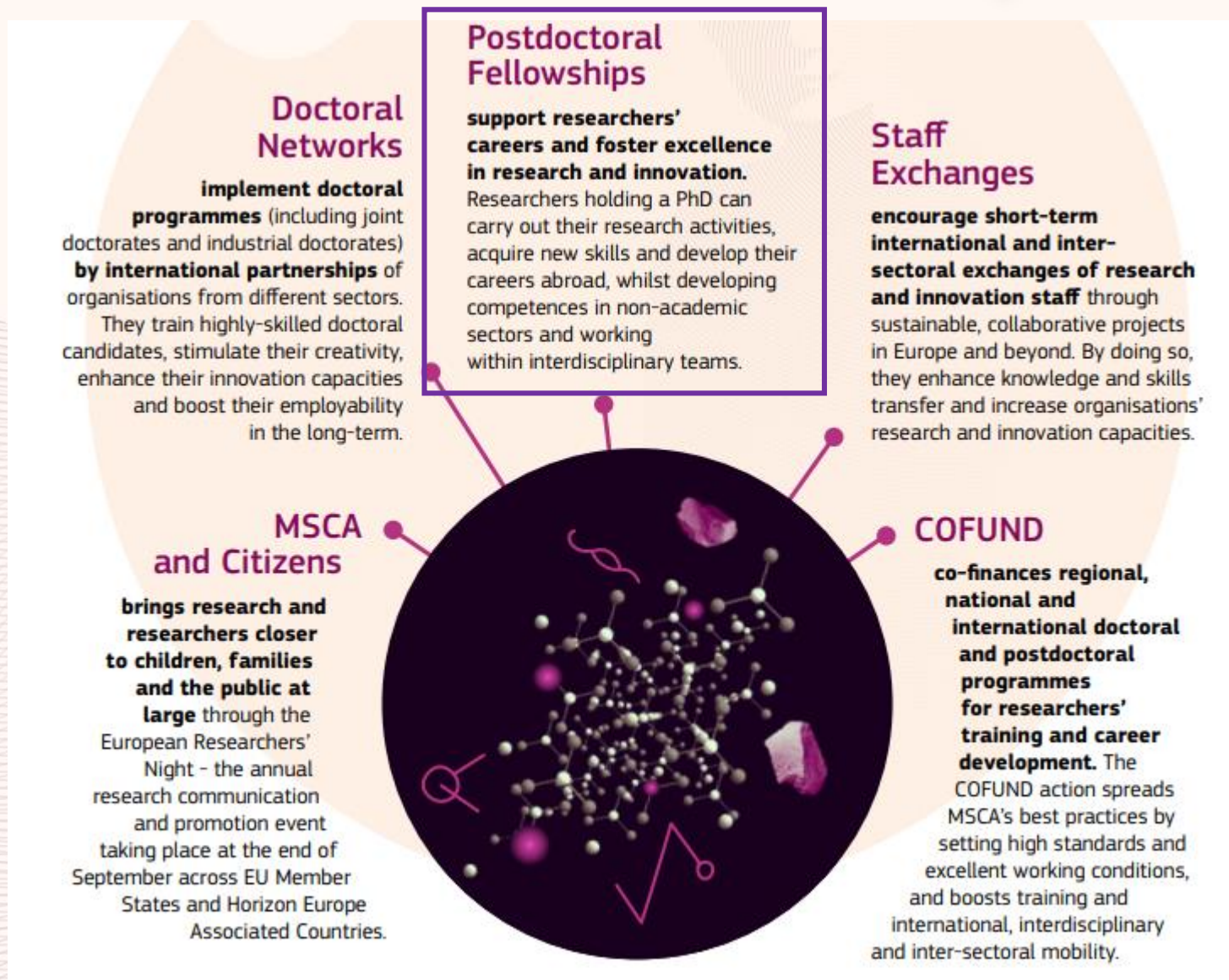


DISCLAIMER: This presentation is provided for information purposes only and is not intended to replace consultation of any applicable legal sources. Neither the European Commission nor the European Research Executive Agency (or any person acting on their behalf) can be held responsible for the use made of the guidance provided in this document.

Overview

- **Postdoctoral Fellowships (PF) overview in the context of the Marie Skłodowska Curie Actions (MSCA) under Horizon Europe**
- **Main aspects of the PF 2025 call**
- **Proposal Completing phase**
- **Evaluation process**

The MSCA under Horizon Europe



MSCA Postdoctoral Fellowships

Objective

“[E]nhance the creative and innovative potential of researchers holding a PhD, wishing to acquire new skills through advanced training, international, interdisciplinary and inter-sectoral mobility.”

Budget (PF-2025): EUR 274.63 million

- EUR 233.44 million European Fellowships
- EUR 41.20 million Global Fellowships

Call deadline (PF-2025): 10 September 2025

MSCA Postdoctoral Fellowships

European Fellowships - EF

Researcher (PhD) - Any Nationality
- Mobility rule at Beneficiary



Beneficiary: EU MS or HE AC

Total Duration:

- 12-24 months (including optional secondment(s))
- + Optional non-academic placement up to 6 months

Global Fellowships- GF

Researcher (PhD) - National or long-term resident*
of EU MS or HE AC
- Mobility rule: at outgoing host



Outgoing phase: Third country 12 – 24 months
(secondment(s): can include 3 months max. at the Beneficiary at the start of project)



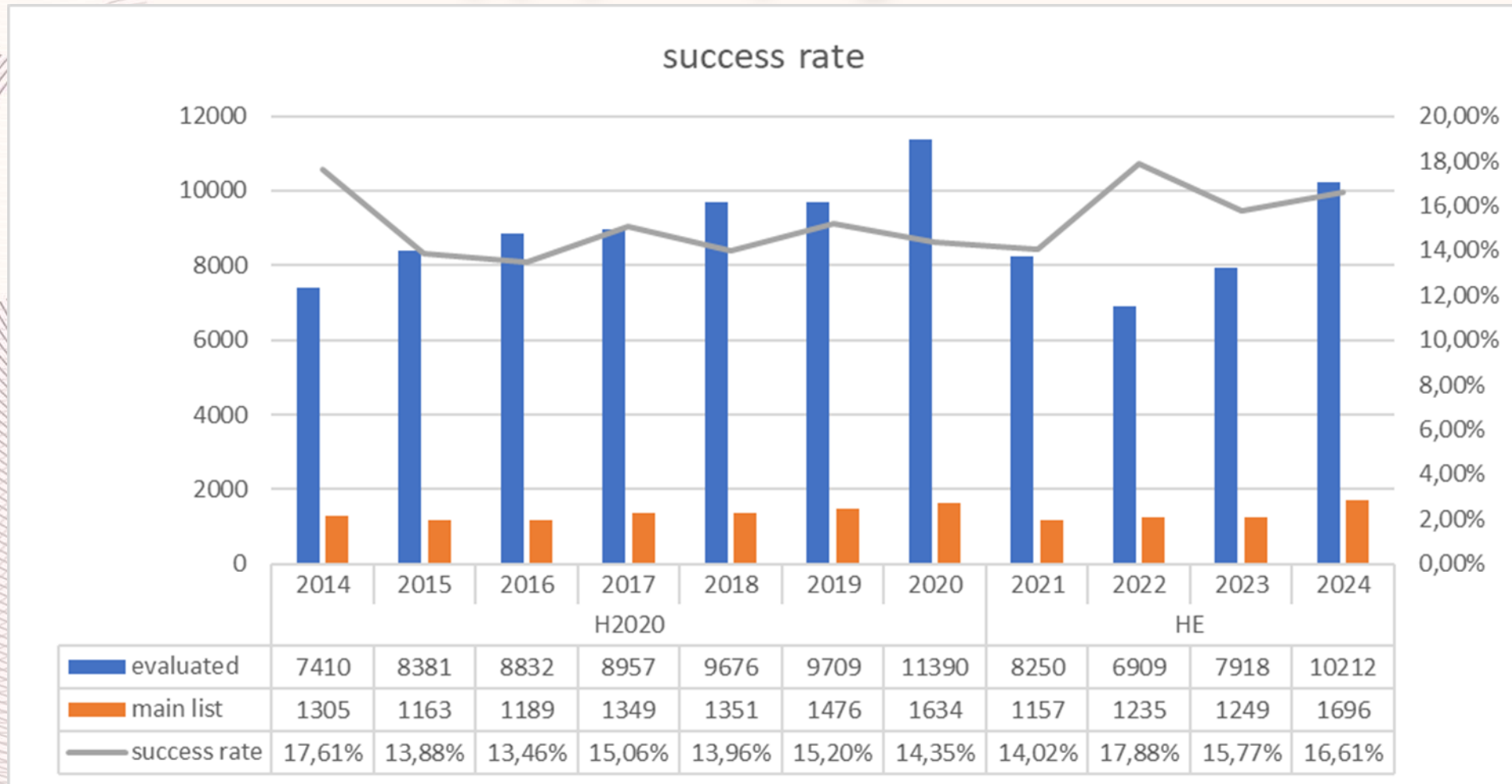
Return phase: 12 months mandatory at the Beneficiary (EU MS or HE AC)

Total Duration:

- 24-36 months (including optional secondment(s))
- + Optional non-academic placement up to 6 months

* Definitions of the long-term resident given page 122 in Horizon Europe Work Programme 2023-2025 / 2. Marie Skłodowska-Curie Actions
(European Commission Decision C(2024) 2371 of 17 April 2024)

Very popular programme



MSCA Postdoctoral Fellowships

- **One beneficiary (Mono-beneficiary)**
 - Host organization must be in EU MS or HE AC*
 - From the academic or non-academic sectors**
- **One researcher**
 - Post Doc (PhD award or successful / unconditional PhD defense)
 - Max. 8 years Full Time Equivalent (FTE)
- **Open to all research domains, including Euratom**
- **Two Types:**
 - European Fellowships (EF)
 - Global Fellowships (GF)

* As of 01 January 2024, UK became an Associated Country to Horizon Europe

** Definitions of the academic and non-academic sectors are given page 108:

Horizon Europe Work Programme 2023-2025 / 2. Marie Skłodowska-Curie Actions (European Commission Decision C(2024) 2371 of 17 April 2024)

European Fellowships - EF

Researcher (PhD) - Any Nationality



Beneficiary: EU Member State or Associated Counties of H.E.

Duration:

- 12-24 months (including optional secondment(s))
- + Optional non-academic placement up to 6 months

Global Fellowships- GF

Researcher (PhD) - National or long-term resident* of EU MS or HE AC (Switzerland now an AC)



Outgoing phase: Third country 12 – 24 months
(secondment(s): can include 3 months max. at the Beneficiary at the start of project)



Return phase: 12 months mandatory at the beneficiary (EU MS or HE AC)

Duration:

- 24-36 months (including optional secondment(s))
- + Optional non-academic placement up to 6 months

* Definitions of the long-term resident given page 122 in Horizon Europe Work Programme 2023-2025 / 2. Marie Skłodowska-Curie Actions
(European Commission Decision C(2024) 2371 of 17 April 2024)

Eligibility Criteria

Postdoctoral Researchers only

- Must be “*in possession of a doctoral degree*” before call deadline
- If not yet awarded, must be successful, “*unconditional*” defence before call deadline

Max. 8 years FTE std postdoctoral research experience

- Measured from date of PhD award (time outside research not counted)

Researcher Mobility

- Must not have resided or carried out their main activity in country of the beneficiary (EF) or the host for the outgoing phase (GF) for more than 12 months in the 36 months immediately before the call deadline
- For GF, must be National or long-term resident of EU MS or HE AC

Example 1

European Fellowship

- French national researcher awarded a PhD in 2020 in Germany.
- Still residing in Germany
- Applies for a European Fellowship together with a host institution in France.



ELIGIBLE?

- Awarded a PhD before the Call deadline;
- less than 8 years' experience in research since award of PhD;
- has not resided in France for more than 12 months in previous 3 years.

Example 2

Global Fellowship

- Cameroonian researcher living in France for the previous 3 years (up to the call deadline), PhD in 2023, applies for a Global Fellowship with a host in France, and outgoing phase in the US.

Eligible?

- Awarded a PhD before the call deadline;
- less than 8 years' experience in research since award of PhD;
- not more than 12 months in the US in the 3 years prior the call deadline
- ...but “long-term resident” in EU/AC?



Secondments & Non-Academic Placements

Do not confuse:

≠ Secondment

≠ Non-Academic Placement (NAP)

≠ Short visits (e.g. field work)

A mix of secondment / NAP/ short visits are allowed within a proposal

Respect the correct terminology



Secondments (Optional)

- **European Postdoctoral Fellowship:** Up to 1/3 of the standard project duration.
- **Global Postdoctoral Fellowship:** Up to 1/3 of the outgoing phase.
 - Secondment(s) must take place during the outgoing phase
 - A maximum of three months of such secondment(s) can be spent at the start of the project at the beneficiary
- Secondments can be divided into several shorter periods
- Secondment Supervisor
- Any sector (academic and non-academic)
- Any country worldwide
- No additional budget for secondment
- Described in Part B, Gantt chart



Non-Academic Placements - NAP (Optional)

- Must be implemented in the non-academic sector*
- Must take place after the standard duration of the fellowship
- Additional budget for the NAP, to be encoded in Part A
- Must take place in EU MS or HE AC
- 6 months duration maximum
- NAP Supervisor
- Described in Part B, Gantt Chart



* Definitions of the academic and non-academic sectors are given page 108:

Some Examples

European Fellowship

Months	1	2	3	4	5	6	7	8	9	10	11	12	13	14	15	16	17	18	19	20	21	22	23	24	25	26	27	28	29	30
WP1																														
WP2																														
WP3																														
Secondments																														
NAP																														

Optional 6 M max,
must be located in MS or AS

Global Fellowship



Months	1	2	3	4	5	6	7	8	9	10	11	12	13	14	15	16	17	18	19	20	21	22	23	24	25	26	27	28	29	30	31	32	33	34	35	36
WP1																																				
WP2																																				
WP3																																				
....																																				
Secondments																																				

Optional, max. 3 months at the
start of project at the beneficiary

Optional,
anywhere in
the world

Optional
NAP
6M max
MS/AC

Budget – PF-2024 Unit Contributions

MSCA Postdoctoral Fellowships	Contributions for the recruited researcher					Institutional unit contributions	
	Per person-month					Per person month	
	Living Allowance	Mobility Allowance	Family Allowance	Long-term leave allowance (if applicable)	Special needs allowance (if applicable)	Research, training and networking contribution	Management and indirect contribution
	€5,990*	€710	€660	€6700 x % covered by beneficiary	Requested unit x (1/number of months)	€1,000	€650

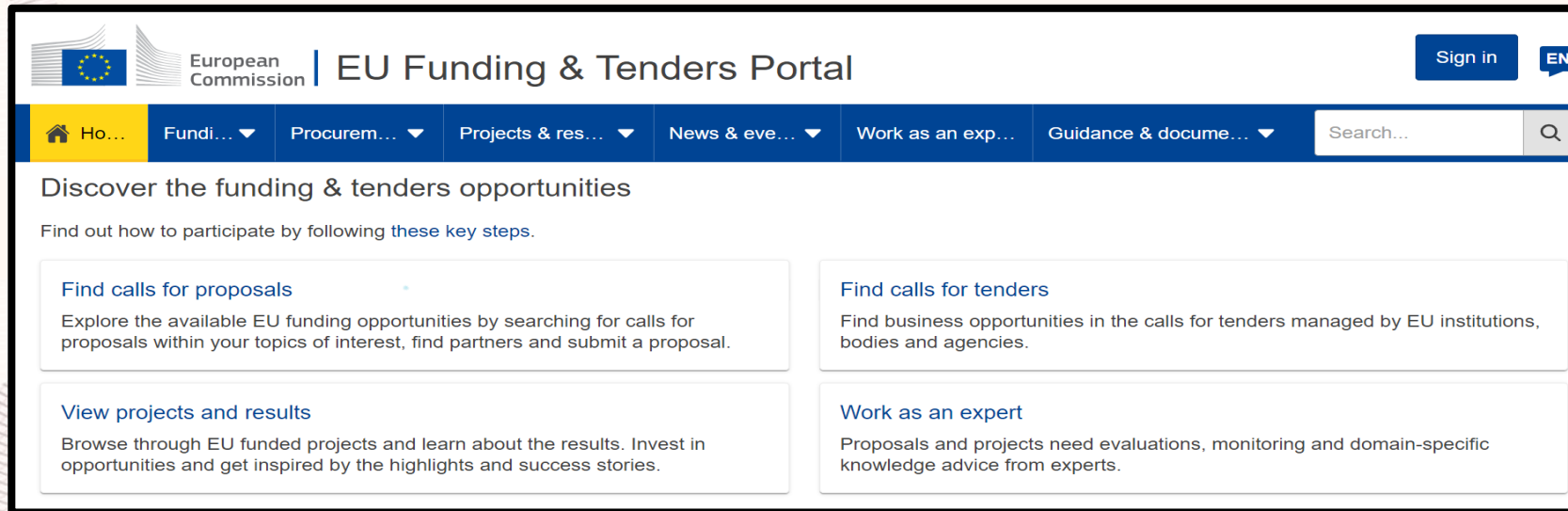
*Living Allowance corrected by a **country correction coefficient (CCC)** – FR = 118,1%

Figures are gross amount

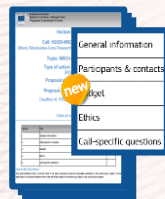


PROPOSAL COMPLETING PHASE

PF 2024 Templates to be used



Part A (Application Form)



Part B (Technical Description - PDF)



**Call Deadline: 10 Sept
2025**

Part A (Application Form)

- **One Acronym** and **One Title** for the project
- Select the **Scientific Area** (i.e. 1 Panel out of the 8 proposed) which is the “best fit” for the evaluation of your proposal
- 3 to 5 **“Descriptors”** which best characterise the content of the proposal, in descending order of relevance
 - First 2 descriptors linked to selected panel, the third unrestricted
 - **Free keywords**
- **Abstract: maximum 2,000 characters**
- **Resubmission** of a proposal from call PF-2024 must be declared

Part A (Application Form)

- **Beneficiary Information** (including validated PIC, supervisor)
- **If Global Fellowship: Outgoing host Information** (in addition to Beneficiary Information)
 - + Mandatory Letter of Commitment (LoC) for the Outgoing host for GF will need to be included in **Part B2**
- **Researcher Information**, including:
 - PhD award date (or date of successful defence)
 - If PhD more than 8 years before the call deadline, please complete table for extensions for the time spent outside research*
 - Countries of residence during the last 5 years up until the call deadline
- **If NAP: Non-Academic Placement host Information**
 - NAP budget to be added in budget table (*attention: CCC of the Beneficiary country*)
- **If Secondment:** The associated partner for the secondment must not be included in Part A

* Explanation given in the *MSCA PF 2025 Guide for Applicant*

Part B1 (Technical Description)

Part B of the Proposal is comprised of *two documents* (**Part B1** and **Part B2**), to be uploaded as separate PDF files

Part B1:

- Mandatory use of the **Part B template** available on the MSCA-PF Call page and structure your proposal accordingly
- Technical description of the project
- **Limit of 10 pages** (excess pages will not be visible to evaluators)
- **Minimum font size 11 points**, with standard spacing, including texts in tables

Part B1 (Technical Description)

1. Excellence	2. Impact	3. Quality and efficiency of the implementation
1.1 Quality and pertinence of the project's research and innovation objectives (and the extent to which they are ambitious, and go beyond the state of the art)	2.1 Credibility of the measures to enhance the career perspectives and employability of the researcher and contribution to his/her skills development	3.1 Quality and effectiveness of the work plan, assessment of risks and appropriateness of the effort assigned to work packages
1.2 Soundness of the proposed methodology (including interdisciplinary approaches, consideration of the gender dimension and other diversity aspects if relevant for the research project, and the quality of open science practices)	2.2 Suitability and quality of the measures to maximise expected outcomes and impacts, as set out in the dissemination and exploitation plan, including communication activities	3.2 Quality and capacity of the host institutions and participating organisations, including hosting arrangements
1.3 Quality of the supervision, training and of the two-way transfer of knowledge between the researcher and the host	2.3 The magnitude and importance of the project's contribution to the expected scientific, societal and economic impacts	
1.4 Quality and appropriateness of the researcher's professional experience, competences and skills		
50%	30%	20%

* Criteria described page 123 in the *Horizon Europe Work Programme 2023-2025 / 2. Marie Skłodowska-Curie Actions (European Commission Decision C(2024) 2371 of 17 April 2024)*



European
Commission

Part B2 (Technical Description)

Part B2 (no formal page limit)

- **CV of the Researcher (indicative length: 5 pages)**
- **Capacity of the Participating Organisations (Section 5.1 and 5.2)**
 - Beneficiary, Outgoing phase host for GF (if GF), organisation for NAP (if NAP), organisation for Secondment (if secondment), organisation linked to the beneficiary (if applicable)
- **Letter of Commitment (for the outgoing phase of the Global Fellowship)**



EVALUATION PROCESS

The MSCA-PF Evaluation

Large-Scale Evaluation

Due to large number of proposals

Standard Peer-Review

≥ 3 experts per proposal

Bottom-up Programme

Proposals and Experts from all disciplines

Expert Balance

of experience, nationality, gender, age, sector, etc.

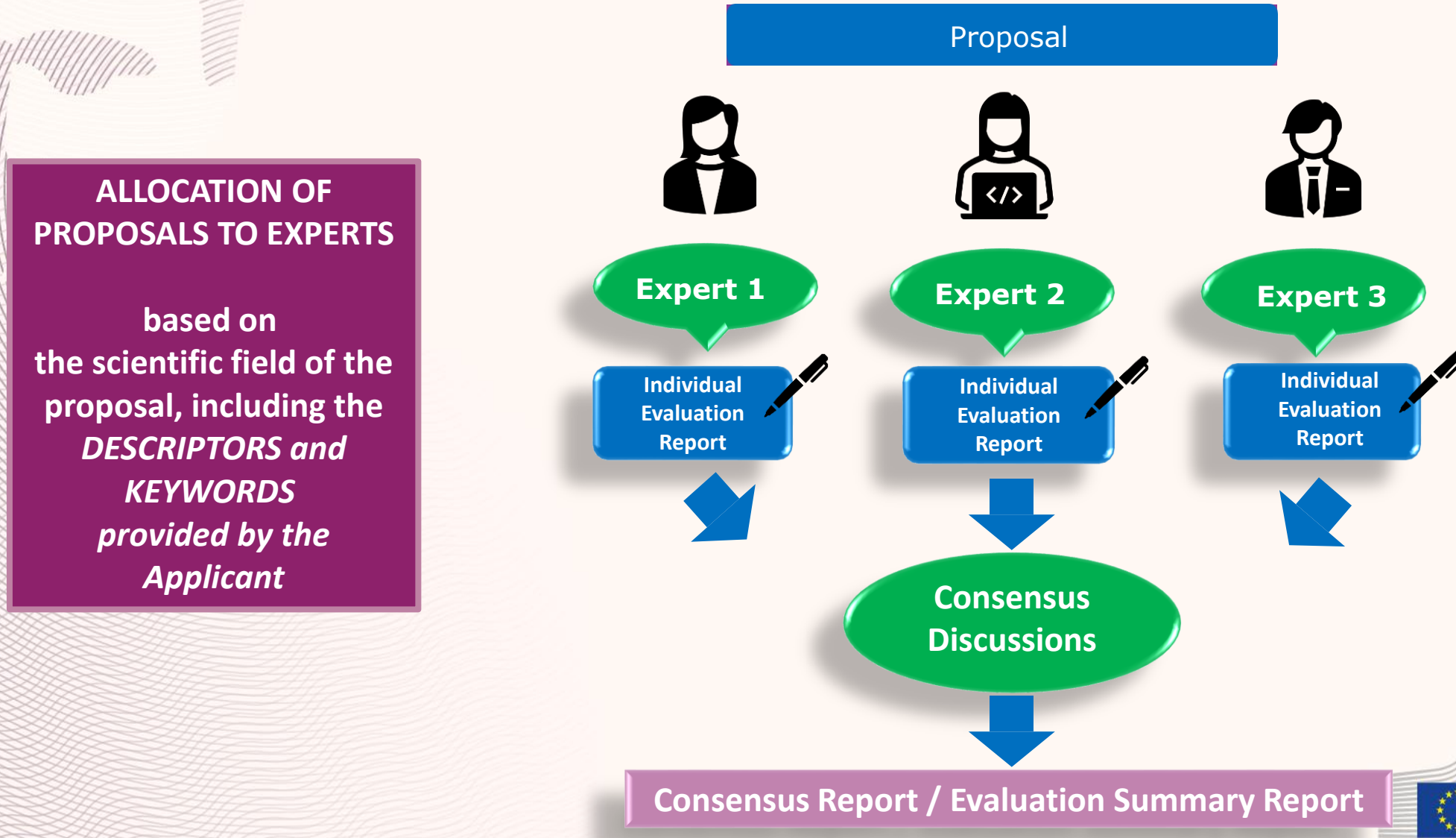
8 Scientific Panels

CHE, ECO, ENG, ENV, LIF, MAT, PHY, SOC

Single-Stage Evaluation

Call deadline to funding decision:
5 months (+3 months to GA signature)

Evaluation Process Overview



Evaluation criteria

1. Excellence	2. Impact	3. Quality and efficiency of the implementation
1.1 Quality and pertinence of the project's research and innovation objectives (and the extent to which they are ambitious, and go beyond the state of the art)	2.1 Credibility of the measures to enhance the career perspectives and employability of the researcher and contribution to his/her skills development	3.1 Quality and effectiveness of the work plan, assessment of risks and appropriateness of the effort assigned to work packages
1.2 Soundness of the proposed methodology (including interdisciplinary approaches, consideration of the gender dimension and other diversity aspects if relevant for the research project, and the quality of open science practices)	2.2 Suitability and quality of the measures to maximise expected outcomes and impacts, as set out in the dissemination and exploitation plan, including communication activities	3.2 Quality and capacity of the host institutions and participating organisations, including hosting arrangements
1.3 Quality of the supervision, training and of the two-way transfer of knowledge between the researcher and the host	2.3 The magnitude and importance of the project's contribution to the expected scientific, societal and economic impacts	
1.4 Quality and appropriateness of the researcher's professional experience, competences and skills		
50%	30%	20%

* Criteria described page 123 in the *Horizon Europe Work Programme 2023-2025 / 2. Marie Skłodowska-Curie Actions (European Commission Decision C(2024) 2371 of 17 April 2024)*



European
Commission

Proposal Ranking

- Proposals ranked – and funding allocated -
 - by Scientific Panel, and
 - by type of Fellowship (*European and Global Fellowships*)
- ***Seal of Excellence****: awarded to proposals which score $\geq 85\%$
- ***New in HORIZON EUROPE***: Resubmission restriction for proposals with same researcher + same host(s) scoring $<70\%$ in previous evaluation
- **REA staff** ensures the evaluation process is respected
- **Independent observer** scrutinises the entire evaluation

* <https://marie-sklodowska-curie-actions.ec.europa.eu/news/several-countries-make-funding-available-for-msca-seal-of-excellence-holders>

ERA FELLOWSHIPS

One single evaluation under MSCA-PF call, one submission & a simple agreement (tick box)
Applicants significantly increase their funding opportunities to be funded

Proposals are eligible for ERA fellowship funding if:

- Submitted by a host institution from a 'widening' country, and for France this concerns the Outermost Regions:
 - Guadeloupe, French Guiana, Martinique, Saint-Martin, Réunion, Mayotte
- Admissible and eligible for MSCA-PF European Fellowships (EF)* (not the GF)
- Have agreed to be considered for ERA fellowships call
- Failed to reach main list under MSCA-PF-EF call
- Indicative Budget for 2025: EUR 8 million

..

* See Horizon Europe Work Programme MSCA & Annex 11 Horizon Europe Work Programme
(European Commission Decision C(2024) 2371 of 17 April 2024) page 72

MSCA - EURATOM Research and Training

*'To enhance nuclear expertise and excellence as well as synergies between Programmes, organisations active in nuclear research established in one of EU Member States or countries associated to the Euratom Research and Training programme 2021-2025, are eligible to participate.'**

- Applicants must comply with all conditions defined in the MSCA Postdoctoral Fellowships calls set in the Work Programme.
- Specific eligibility conditions that apply to MSCA postdoctoral fellowships in the research areas covered by the Euratom Research.
- Indicative budget: EUR 1 million from the 2025 budget
- Link to Euratom Work Programme*:
 - https://research-and-innovation.ec.europa.eu/funding/funding-opportunities/funding-programmes-and-open-calls/horizon-europe/euratom-research-and-training-programme_en

* See also Horizon Europe Work Programme MSCA (European Commission Decision C(2024) 2371 of 17 April 2024)
And Euratom Research and Training Programme Euratom Work Programme 2023-2025 for nuclear research and training / Annex -
Euratom Research and Training Programme Work Programme 2023-2025 (p75 – Support for MSCA in nuclear research and training

MSCA – Academic / non-academic sectors

Academic sector

- ✓ public or private higher education establishments
- ✓ public or private non-profit research organisations
- ✓ International European Research Organisations



Non-academic sector

- ✓ any socio-economic actor not included in the academic sector



Non-Academic Placements

- New under Horizon Europe
- Aim to promote “career moves between sectors and organisations and thereby stimulate innovation and knowledge transfer while expanding career opportunities for researchers”
- Defined as “...an additional period of up to six months to support researchers opting for a placement at the end of the project to work on R&I projects in an organisation from the non-academic sector established in an EU Member State or Horizon Europe Associated Country.”

See MSCA Work Programme C(2024)2371, p.41

Requirements

- Must take place *after the end of the project* (i.e. starts on month 25 for a standard EF 24-month project)
- Maximum duration of 6 months, but can be shorter
- Can only take place at a non-academic institution
- NAP host must be in an EU MS or HE AC with a separate supervisor

Challenges

- **“Non-academic sector” is not a validation criterion**
 - ✓ NO to Research Organisation (or YES and non-profit)
 - ✓ NO to Higher Education
 - ✓ NO to International Organisation or International Organisation of European Interest
- **Submission data is not 100% reliable**
 - Secondments are often wrongly encoded in the proposal as NAPs
 - We cannot “see” in the system the specific role of an Associated Partner
- **Not widely requested by applicants**
 - Circa. 3.7% of evaluated proposals include an admissible NAP
 - Circa. 5% of funded proposals include a NAP
- Not many MSCA-PF projects with NAPs have finished
- **French proposals with a NAP: 2 only in LIFE) sciences (2021-2024)**

General advices

- Distinction between European & Global Fellowships
- Careful with respecting eligibility requirements:
 - PhD, mobility and max 8 years research experience
- Do not confuse Secondments and Non-Academic Placements, and use the correct terminology
- Ineligible secondment and/or Non-Academic Placement will be disregarded by the experts
- Careful with respecting the font requirements
- Part B1: Do not exceed the 10-page limit of the proposal
- Part B2: Add the Letter of Commitment (for Global Fellowships)

Indicative timeline

Call Opening:	8 May 2025
Call Deadline:	10 Sept 2025
Evaluation Period:	Oct 2025 – Jan 2026
Information Letter:	Feb 2026
Project Starting Dates:	Apr 2026 – Sept 2027

Resources and Guidance

- [MSCA Work Programme 2023-2025](#)
- [MSCA PF 2025 – Call page](#) on the EU funding & Tenders Portal
- [MSCA PF 2024 - Guide for Applicants](#) (new Guide available soon)
- [Proposal templates](#) (PF-2025, published end 2024)
- [Funding and Tenders Portal Q&As](#)
- [MSCA Website](#)
- [National Contact Points](#)
- [Research Enquiry Service](#)

Thank you
for your attention!