

Call 2024 – Info day France

Dieter BRIGITTA

Call Coordinator

12/03/2024



Table of contents

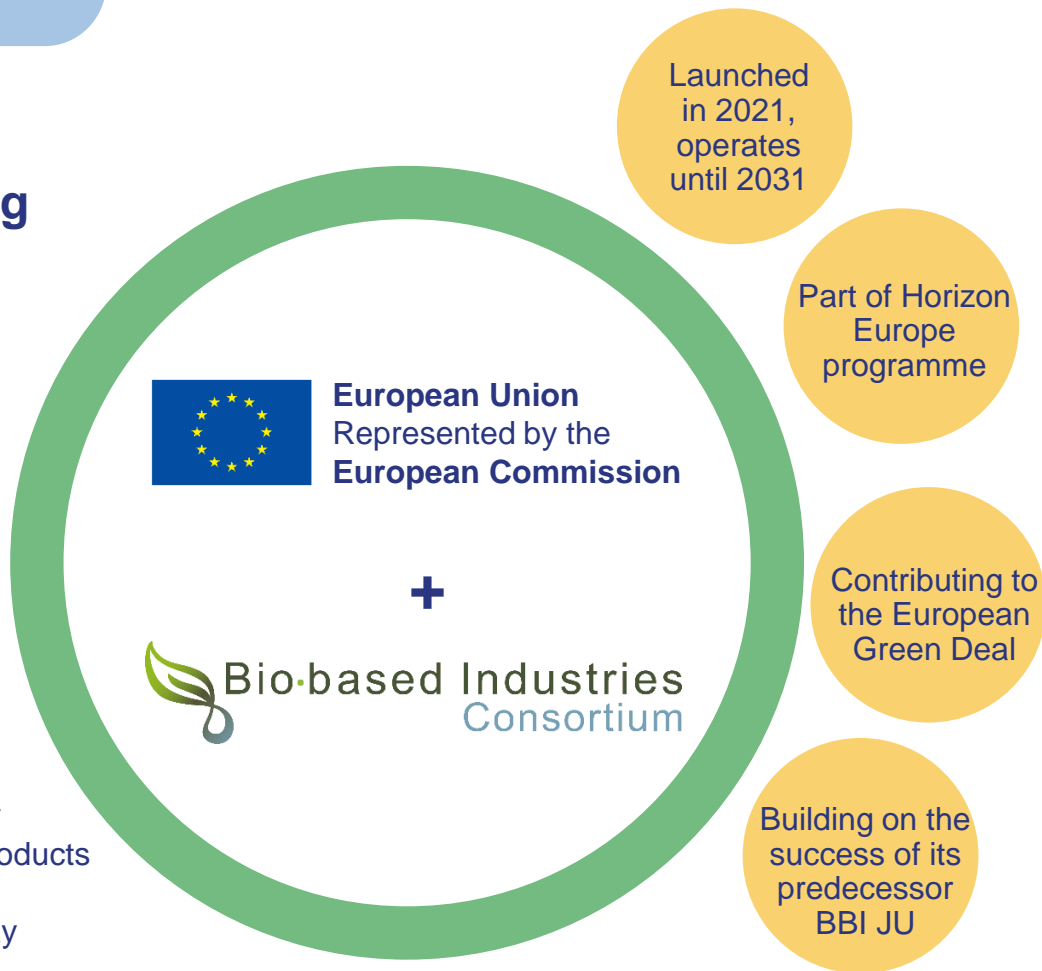
- **BBI/CBE JU vs. France**
- **CBE JU vs. Horizon Europe: similarities & differences**
 - Call 2024 topic overview & structure
 - CBE specifics & terminology
 - Eligible costs
- **Proposal preparation**
 - Timing
 - Tips & tricks on how to write a good proposal
 - Networking opportunities

BBI/CBE JU vs. France

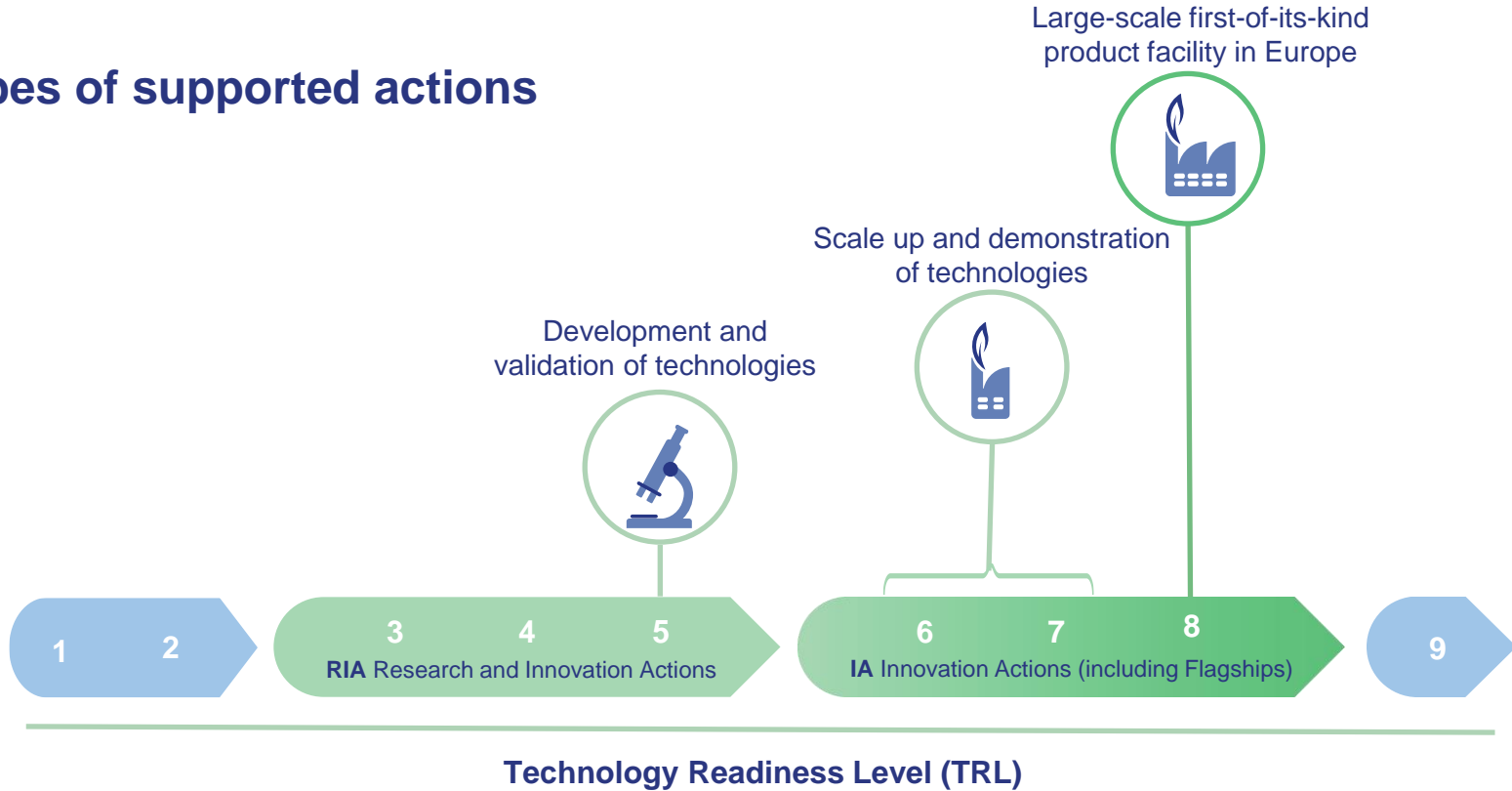
Circular Bio-based Europe Joint Undertaking

€2 billion public-private initiative

CBE JU is funding projects that deliver bio-based solutions – materials and products made from waste and biomass – in an innovative, sustainable and circular way



Types of supported actions



CSA: Coordination and Support Actions (no link with TRLs)

France



First-of-its-kind industrial biorefinery



Demonstration plant

Opportunities for the bioeconomy

Socio-economic benefits

INNOVATION

JOB CREATION

Main resources in CBE JU projects



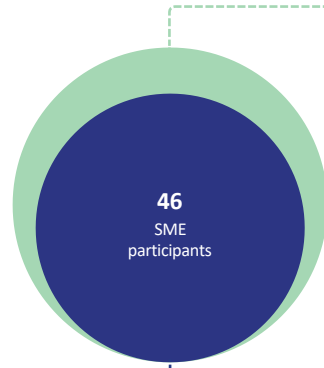
FORESTRY RESIDUES



AGRO RESIDUES



AQUATIC, ALGAE AND FISHERY RESIDUES



€85 million SME funding

€117 million CBE JU funding in France



€97M

€17M €3M



FARMYNG

Biorefinery location
Poulainville, Hauts-de-France

Company
YNSECT

Resource
Mealworms

Products
100% bio-based proteins for animal feed & food.

Benefit
The FARMYNG project uses mealworms to create sustainable proteins with minimal environmental impact. This approach reduces Europe's over-reliance on protein imports. YNSECT plans to expand the biorefinery concept to other locations.

- Private companies
- Universities & research centres
- Other



Check all the projects in the country

CBE JU vs. Horizon Europe: similarities & differences



Call 2024: 18 topics & budget

Type of action	Topics HORIZON-JU-CBE-2024		Million EUR
IA- Flagship	IAFlag-01	Bio-based value chains for valorisation of sustainable oil crops	20
	IAFlag-02	Bio-based dedicated platform chemicals via cost-effective, sustainable and resource-efficient conversion of biomass	20
	IAFlag-03	Bio-based value chains for valorisation of sustainable natural fibre feedstock	20
IA	IA-01	Bio-based materials and products for biodegradable in soil applications	15
	IA-02	Sustainable microalgae as feedstock for innovative, added-value applications	15
	IA-03	Enlarging the portfolio of commercially produced “Safe and Sustainable by design” (SSbD) solvents	15
	IA-04	Circular and SSbD bio-based construction & building materials with functional properties	15
	IA-05	Selective and sustainable (co)-production of lignin-derived aromatics	15
	IA-06	Innovative bio-based adhesives and binders for circular products meeting market requirements	15
	IA-07	Innovative conversion of biogenic gaseous carbon into bio-based chemicals, ingredients, materials	15
RIA	R-01	Valorisation of polluted/contaminated wood from industrial and post-consumer waste streams	7
	R-02	Biotech routes to obtain bio-based chemicals/materials replacing animal-derived ones	7
	R-03	Sustainable, bio-based alternatives for crop protection	10
	R-04	SSbD bio-based coating materials for applications under demanding and/or extreme conditions	7
	R-05	Innovative bio-based food/feed ingredients	7
CSA	S-01	New forms of cooperation in agriculture and the forest-based sector	4
	S-02	Mobilise inclusive participation in bio-based systems and supporting the CBE JU widening strategy and its action plan	3
	S-03	Supporting the CBE JU Deployment Group on Primary Producers	3

Call topic structure

HORIZON-JU-CBE-2024-XX-NN Topic title

Type of action	Research and Innovation Action
Indicative budget	The total indicative budget for the topic is EUR 10 million
Expected EU contribution per project	It is estimated that a contribution of EUR 5 million would allow these outcomes to be addressed appropriately. Nonetheless, this does not preclude submission and selection of a proposal requesting different amounts
TRL	TRL 4-5 at the end of the project
Link to CBE JU Specific Objectives	1.1: Increase the intensity of cross-disciplinary research and innovation activities
Link to CBE JU SRIA Strategic Priorities	1.1.2: Develop innovative production systems in the bio-based industry 1.1.3: Develop innovative bio-based products
CBE JU KPIs	4.5 Number of products with improved life cycle environmental performance 5.1 Number of innovative products that are biodegradable, compostable, recyclable, reused or upcycled (circular-by-design) 5.2 Number of projects developing circular production practices (incl. industrial & industrial urban symbiosis) 6 Increase innovative bio-based outputs and products

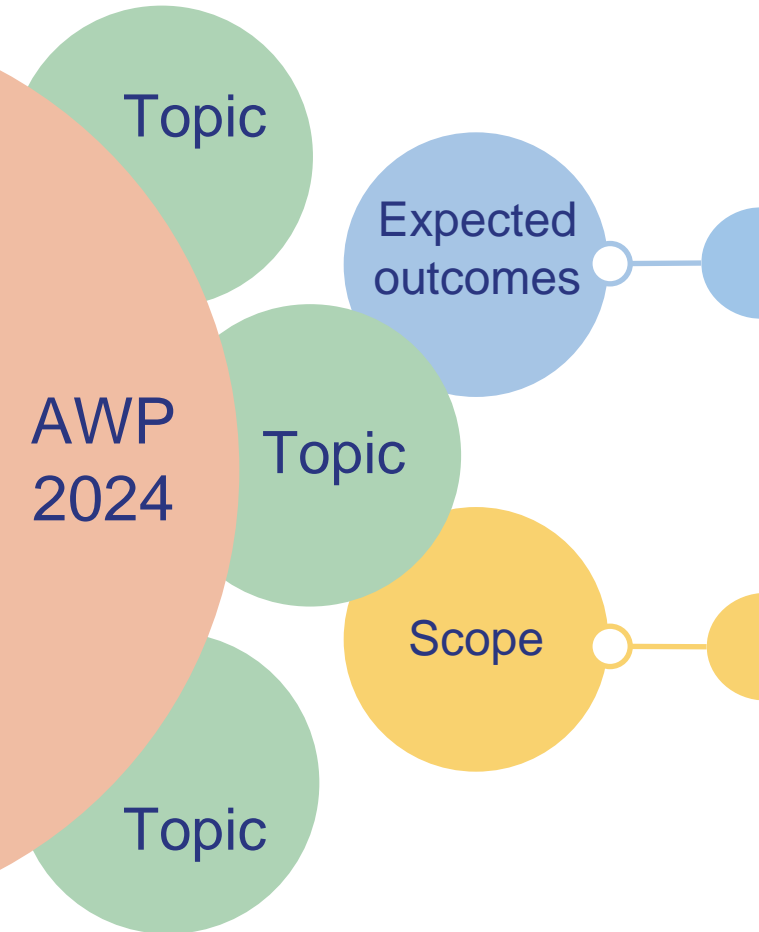
Topic

Topic

Topic

AWP
2024

Call topic structure



The 'change' to be achieved

- Provides a broad description of what is the **impact** to be achieved by the project
- The **dissemination and exploitation** of future research results are vital for the impact`

The 'problem'

- Identifies the aspects of the **challenge** that needs to be tackled
- Specifies a **perimeter** to the problem described
- Does not specify the expected solutions to the problem, nor the approach to be taken

Horizon Europe + CBE requirements

Horizon Europe (HE) rules

- Eligibility
- Admissibility
- General annexes

HE evaluation criteria

- Excellence
- Impact
- Implementation

CBE Annual Work Programme 2024

- Topics
- **Specific requirements**
- Budget

HE Programme Guide

HE Online Manual

HE General Annexes

HE Annotated Model Grant Agreement



EU Grants
AGA - Annotated Model Grant Agreement
2021 Funding Programme 2021-2027



Part A

Part B

Proposal structure

Application forms (Part A)

Horizon Europe
Application forms (Part A)

Topic:
Type of action:
Type of Model Grant Agreement:
Proposal acronym:

Table of contents:

1. Excellence
1.1 Operational and academic excellence
1.2 Operational and academic excellence
1.3 Operational and academic excellence

2. Impact
2.1 Operational and academic excellence

3. Implementation
3.1 Operational and academic excellence

3.2 Methodology
3.3 Operational and academic excellence

3.4 Budget
3.5 Operational and academic excellence

3.6 Operational and academic excellence

3.7 Operational and academic excellence

3.8 Operational and academic excellence

3.9 Operational and academic excellence

3.10 Operational and academic excellence

3.11 Operational and academic excellence

3.12 Operational and academic excellence

3.13 Operational and academic excellence

3.14 Operational and academic excellence

3.15 Operational and academic excellence

3.16 Operational and academic excellence

3.17 Operational and academic excellence

3.18 Operational and academic excellence

3.19 Operational and academic excellence

3.20 Operational and academic excellence

3.21 Operational and academic excellence

3.22 Operational and academic excellence

3.23 Operational and academic excellence

3.24 Operational and academic excellence

3.25 Operational and academic excellence

3.26 Operational and academic excellence

3.27 Operational and academic excellence

3.28 Operational and academic excellence

3.29 Operational and academic excellence

3.30 Operational and academic excellence

3.31 Operational and academic excellence

3.32 Operational and academic excellence

3.33 Operational and academic excellence

3.34 Operational and academic excellence

3.35 Operational and academic excellence

3.36 Operational and academic excellence

3.37 Operational and academic excellence

3.38 Operational and academic excellence

3.39 Operational and academic excellence

3.40 Operational and academic excellence

3.41 Operational and academic excellence

3.42 Operational and academic excellence

3.43 Operational and academic excellence

3.44 Operational and academic excellence

3.45 Operational and academic excellence

3.46 Operational and academic excellence

3.47 Operational and academic excellence

3.48 Operational and academic excellence

3.49 Operational and academic excellence

3.50 Operational and academic excellence

3.51 Operational and academic excellence

3.52 Operational and academic excellence

3.53 Operational and academic excellence

3.54 Operational and academic excellence

3.55 Operational and academic excellence

3.56 Operational and academic excellence

3.57 Operational and academic excellence

3.58 Operational and academic excellence

3.59 Operational and academic excellence

3.60 Operational and academic excellence

3.61 Operational and academic excellence

3.62 Operational and academic excellence

3.63 Operational and academic excellence

3.64 Operational and academic excellence

3.65 Operational and academic excellence

3.66 Operational and academic excellence

3.67 Operational and academic excellence

3.68 Operational and academic excellence

3.69 Operational and academic excellence

3.70 Operational and academic excellence

3.71 Operational and academic excellence

3.72 Operational and academic excellence

3.73 Operational and academic excellence

3.74 Operational and academic excellence

3.75 Operational and academic excellence

3.76 Operational and academic excellence

3.77 Operational and academic excellence

3.78 Operational and academic excellence

3.79 Operational and academic excellence

3.80 Operational and academic excellence

3.81 Operational and academic excellence

3.82 Operational and academic excellence

3.83 Operational and academic excellence

3.84 Operational and academic excellence

3.85 Operational and academic excellence

3.86 Operational and academic excellence

3.87 Operational and academic excellence

3.88 Operational and academic excellence

3.89 Operational and academic excellence

3.90 Operational and academic excellence

3.91 Operational and academic excellence

3.92 Operational and academic excellence

3.93 Operational and academic excellence

3.94 Operational and academic excellence

3.95 Operational and academic excellence

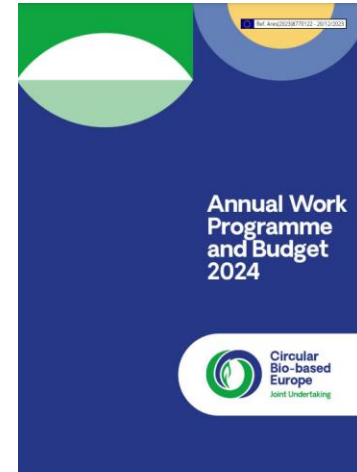
3.96 Operational and academic excellence

3.97 Operational and academic excellence

3.98 Operational and academic excellence

3.99 Operational and academic excellence

3.100 Operational and academic excellence



Specific CBE JU requirement	Type of action	Where to include it in Part B
Feedstock sourcing (eligibility condition)	RIA and IA, incl. FLAG	Part B – (Y/N) question
Feedstock sustainability requirements	RIA and IA, incl. FLAG	Part B – (Y/N) question
Description of feedstock	RIA and IA, incl. FLAG	Part B – 1.2 Methodology
Environmental performance - Ex-ante assessment <ul style="list-style-type: none"> • identification of environmental issues • estimation of environmental sustainability performance, • estimation of carbon removal potential 	RIA and IA, incl. FLAG	Part B – 1.2 Methodology
Environmental sustainability and circularity - Ex-post assessment <ul style="list-style-type: none"> • Dedicated task for RIA • Dedicated task or WP (LCA) for IA non-FLAG • Dedicated task or WP (LCSA) for FLAG 	RIA IA- non FLAG FLAG	Part B – 3.1 Workplan and resources

Specific CBE JU requirement	Type of action	Where to include it in Part B
Multi-actor approach (MAA)	IA, incl. FLAG RIA and CSA, when specified	Part B – 1.2 Methodology
Economic aspects: <ul style="list-style-type: none"> Economic viability Business case and business model Business plan 	RIA IA, incl. FLAG FLAG	Part B – 2.2 Measures to maximise impact – D& E&C FLAG: Annex (Business plan)
Digital technologies	RIA and IA, incl. FLAG	Part B – 1.2 Methodology
Cross-disciplinary aspects and Social Sciences and Humanities (SSH)	RIA and IA, incl. FLAG	Part B – 1.2 Methodology
Recommendations to stakeholders	IA, incl. FLAG	Part B – 3.1 Workplan and resources

Similarities and **differences** with Horizon Europe



Funding rate

- RIA: 100%
- IA: **60%** (100% non-profit)
- CSA: 100%



Award criteria

- RIA, IA & CSA: Excellence, Impact, Implementation
- IA: + Impact **Ability to ensure 15% (IA) or 20% (IAFlag) of in-kind contribution to operational activities (IKOP)**
= minimum IKOP percentage



Page limit

- RIA: **50 p.**
- IA: **70 p.**
- CSA: 30 p.



Scoring thresholds

- Excellence: 3/5
- Impact: **4/5**
- Implementation: 3/5
- Total: **11/15**



Score weighting factor

- IA: Impact x **1,5**

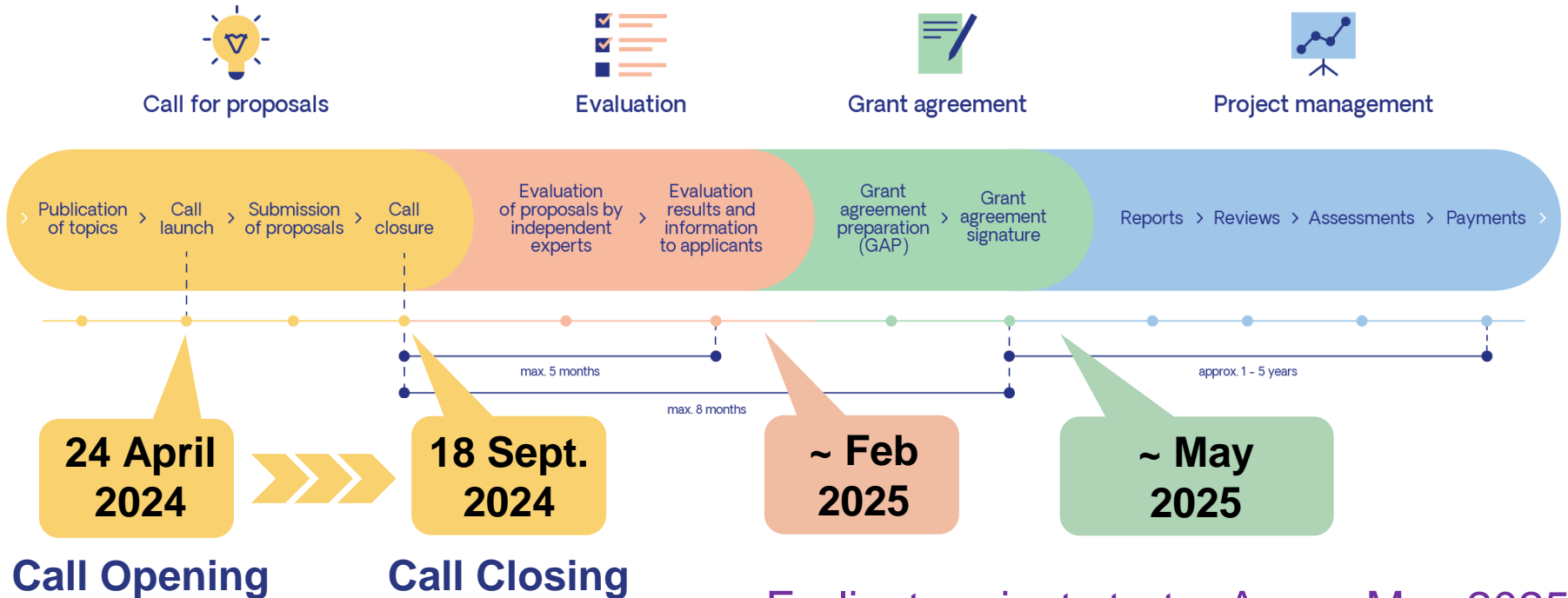
CBE JU cost eligibility

- **CBE JU fully follows the Horizon Europe cost eligibility rules**
- **Cost categories**
 - A. Personnel costs (employees, natural person under direct contract, seconded persons, SME owners not receiving a salary,...)
 - B. Subcontracting costs
 - C. Purchase costs (travel & subsistence; Equipment (typically depreciated); other goods, works & services)
 - D. Other cost categories
 - E. Indirect costs (= 25% of categories A, C, and sometimes D; but not B. Subcontracting)
- **Most relevant info sources**
 - [Annotated model grant agreement](#), art. 6 (“eligible and ineligible costs and contributions”): includes definitions *and* examples
 - CBE JU’s FAQ for applicants Call 2024 (in the making)

CBE JU Call 2024:
Proposal preparation



Proposal preparation



Earliest project start = Apr or May 2025

Aim for total “Topic eclipse”

Topic⁺

Proposal

Topic⁺ Proposal

Proposal

Topic⁺ = Topic text + HE requirements + CBE specific requirements

every single word in
topic text counts!



Proposal template Part B: technical description
Fill in the following

Field	Field name	Field type	Comments
1	Proposal No.	Text	Numbered sequentially from 1
2	Contract No.	Text	
3	Topic	Text	
4	Number	Text	
5	Number of months	Text	From 1 to 36
6	Number of days	Text	From 1 to 365
7	Number of days	Text	From 1 to 365
8	Number of days	Text	From 1 to 365
9	Number of days	Text	From 1 to 365
10	Number of days	Text	From 1 to 365
11	Number of days	Text	From 1 to 365
12	Number of days	Text	From 1 to 365

Part B

every specific requirement
element counts!

A good and convincing CBE JU proposal



Ensure that the proposed work is within the **scope of the topic**



Demonstrate that the idea is **ambitious** and goes beyond the **state of the art**



Your **methodology** must take into account open science practices and interdisciplinarity (+ gender dimension, if applicable)



Show clearly how the proposed work could contribute to the **outcomes and impacts** described in the work programme (the pathway to impact)



Describe the planned measures to **maximise the impact** of the project ('plan for dissemination & exploitation including communication activities')



Demonstrate the quality of the **implementation**, including work plan, resources and participants

Read carefully the **AWP2024** and the **Strategic Research and Innovation Agenda (SRIA)**, for a good understanding of the context and long-term objectives of CBE JU !!!

Two main sources of information

F&T Portal Online Manual

- > Participant Register —
- > Grants
 - Procurement
 - Prizes
 - Financial instruments
- > Working as an expert
- Help

My Area — User account and roles

Grants

Applying for funding

Find a call → Find partners → Register an organisation → Submit a proposal

Evaluation & Grant signature

Admissibility and eligibility check → Evaluation of proposals → Grant preparation → Grant signature

<https://webgate.ec.europa.eu/funding-tenders-opportunities/display/OM/Online+Manual>

Circular Bio-based Europe Joint Undertaking

About ▾ Apply for funding ▾ Projects Achievements News & Events

Search 🔍

Open calls for proposals

How to apply for funding

Closed calls for proposals

Manage your project

Networking platform

CBE JU photo competition 2024 for submission #CBEImpact

All projects are invited to submit their photos and videos by 20 April.

Discover rules & criteria ▶

<https://www.cbe.europa.eu/open-calls-proposals>
(Incl. FAQ for applicants v1, link to networking platform,...)

CBE JU networking platform

- Annually updated & free partner search facility offered by CBE JU, more tailored to CBE needs than the Portal's partner search facility
- Open since mid-February 2024, will remain open until (at least) call closure on 18 Sept 2024
- Different services: 'Find & be found'
 - Partner search & expressing interest in on or more topics;
 - Presentation of project ideas
 - Showcasing / offering your expertise
 - Direct messaging & scheduling B2B meetings
 - Registration for the CBE JU info days
- Accessible via <https://www.cbe.europa.eu/networking-platform>

CBE JU Info Day 2024

23 April, Brussels

Register now!

#CBEInfoDay



Find more:
cbe.europa.eu/infoday24



**Circular
Bio-based
Europe**
Joint Undertaking

Contact us

info@cbe.europa.eu
www.cbe.europa.eu

Follow us



Subscribe



 Bio-based Industries
Consortium

 Co-funded by
the European Union