



# Why apply for an MSCA-PF?

Testimony: Process & Impact



**Dr Marta Vázquez-Gómez**  
Associate Professor of Animal Nutrition

# Index

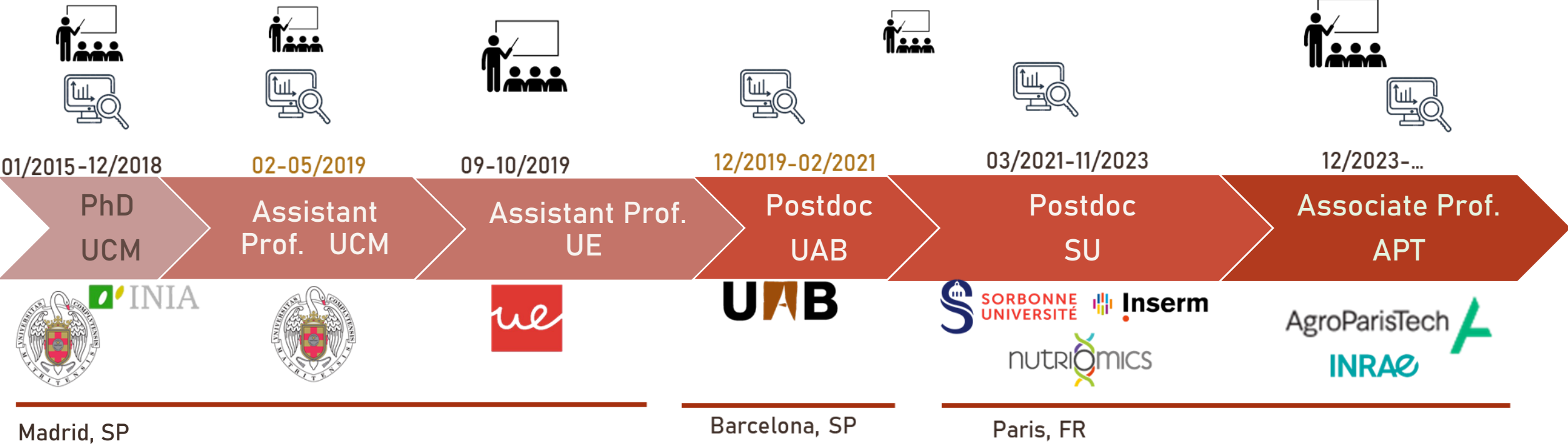
- Who I am
- Impact
- How to start
- Writing
- Congratulations!... or Not
- Project
- Key Messages

# My Professional Carrer

**DVM**   
2012

**Teaching** 

**Research**  43 Papers (9 ← 1<sup>st</sup> author)  
3 in prep. (2 ← 1<sup>st</sup> author)



Madrid, SP

Barcelona, SP

Paris, FR

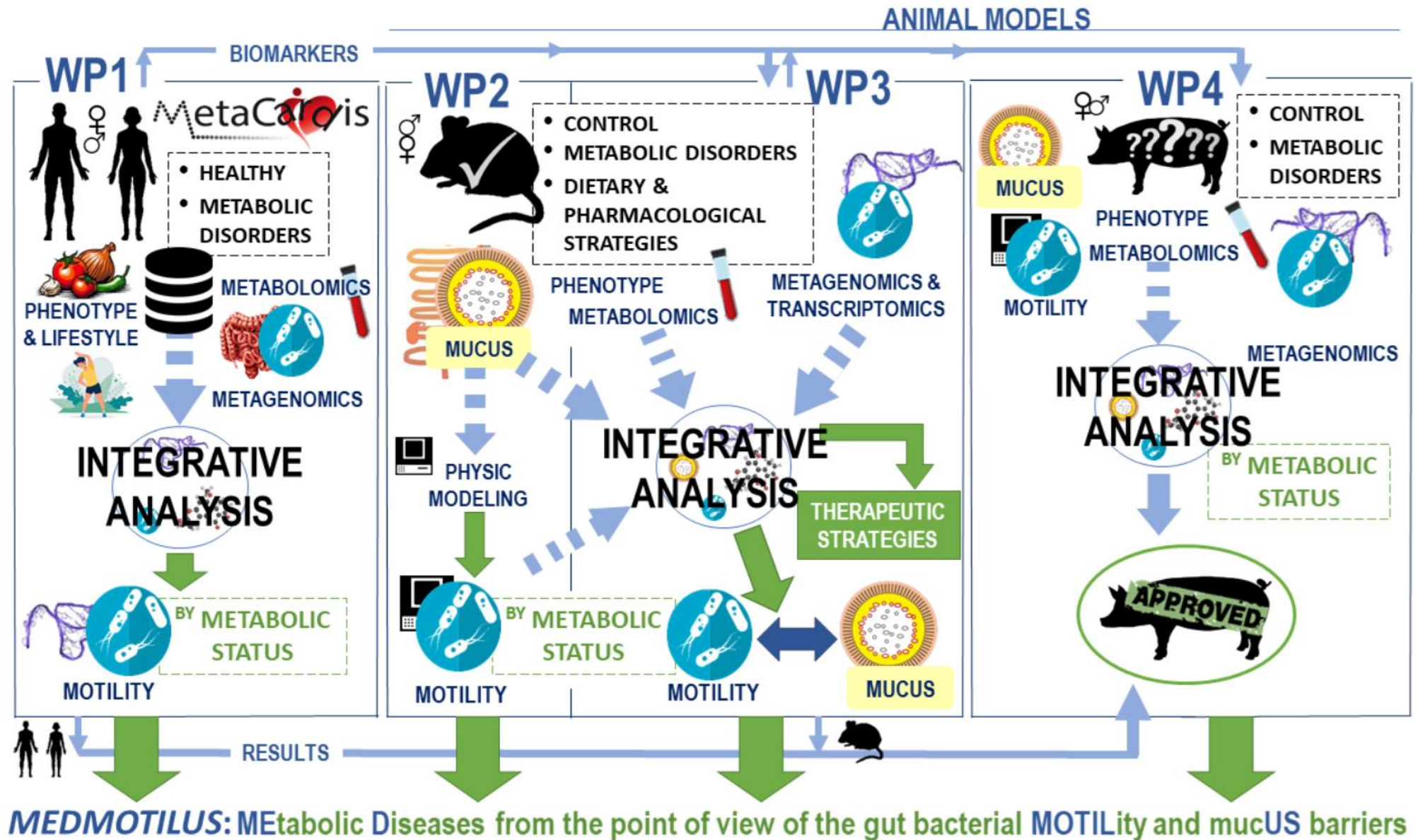
Stays FR  
 INRA  
SCIENCE & IMPACT

# MSCA-PF Project



06/2022  
11/2023

18 months



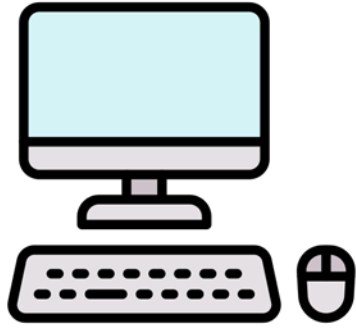
# Impact

Associate Professor of Animal Nutrition  
(Maître de conférence)



- Prestigious
- Training – soft skills
- Outputs
- Training – scientific skills
  
- Network

# How to start



+

Your network !!



+

Webinars

National Contact Points (NCPs)

- Your interests → **Dream Big!**
- Potential of the team
  
- Your current skills
- Services of the 'host' institution...??
  
- Personal choices



## Interviews

- Discussing the Possibilities
  
- Ask your questions

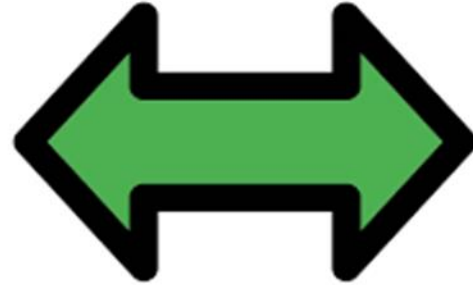


April MAY June

# Writing

Dream big, Work hard

- Host Team
- Services of the host institution
- PNC
- Guidelines
- Colleagues
- MSCA Forums



- Scientific proposal & +
- Impact
- Feasibility

Part B1 – 10 pages

3-2 months



- 1.2 → **Gender dimension** and other diversity aspects
- 1.3 ...**training** and **of the two-way transfer of knowledge** ....
- 2.2 ..... **dissemination and exploitation** plan
- 3.1 Quality and **effectiveness** of the work plan, assessment of **risks** ...

- 1.4 Quality and appropriateness of **the researcher**.....
- +2.1



**Don't wait for the last days!!**

# Congratulations!



- **Start date** → Project Officer
- Check scientific requirements, courses, events...
- Supplementary ethical requirements?

# ... or Not



- **Proposal writing**
- European research
- + knowledges



- Next Year?
- Another lab?



# Project

## Before

- Check **state-of-the-art, requirements, courses, events... Changes in the project?**
- How much money? → Supervisor - Host institution
- Verify your **salary** before signing (grade, allowances...)
- **Official documents** required for the National Administration



## During

- Career Development Plan → **Supervisor**
- **Personal Diary**
- **Compulsory** Ethical & Data Management Plan **Deliverables**
- Implementation: **Possible Modifications** (scientific or professional issues) → **Project Officer**
- Take advantage of associations, events, networks...

# KEY MESSAGES

- Fantastic Opportunity: **Contact** potential supervisors!
- Professional Challenge: Dream big, **Work hard!**
- Make **smart choices!**
- Take advantage of R&D Services, if not...Many online materials!
- **Networking**





# Why apply for an MSCA-PF?

Testimony: Process & Impact



[marta.vazquezgomez@agroparitech.fr](mailto:marta.vazquezgomez@agroparitech.fr)

**Dr Marta Vázquez-Gómez**  
Associate Professor of Animal Nutrition