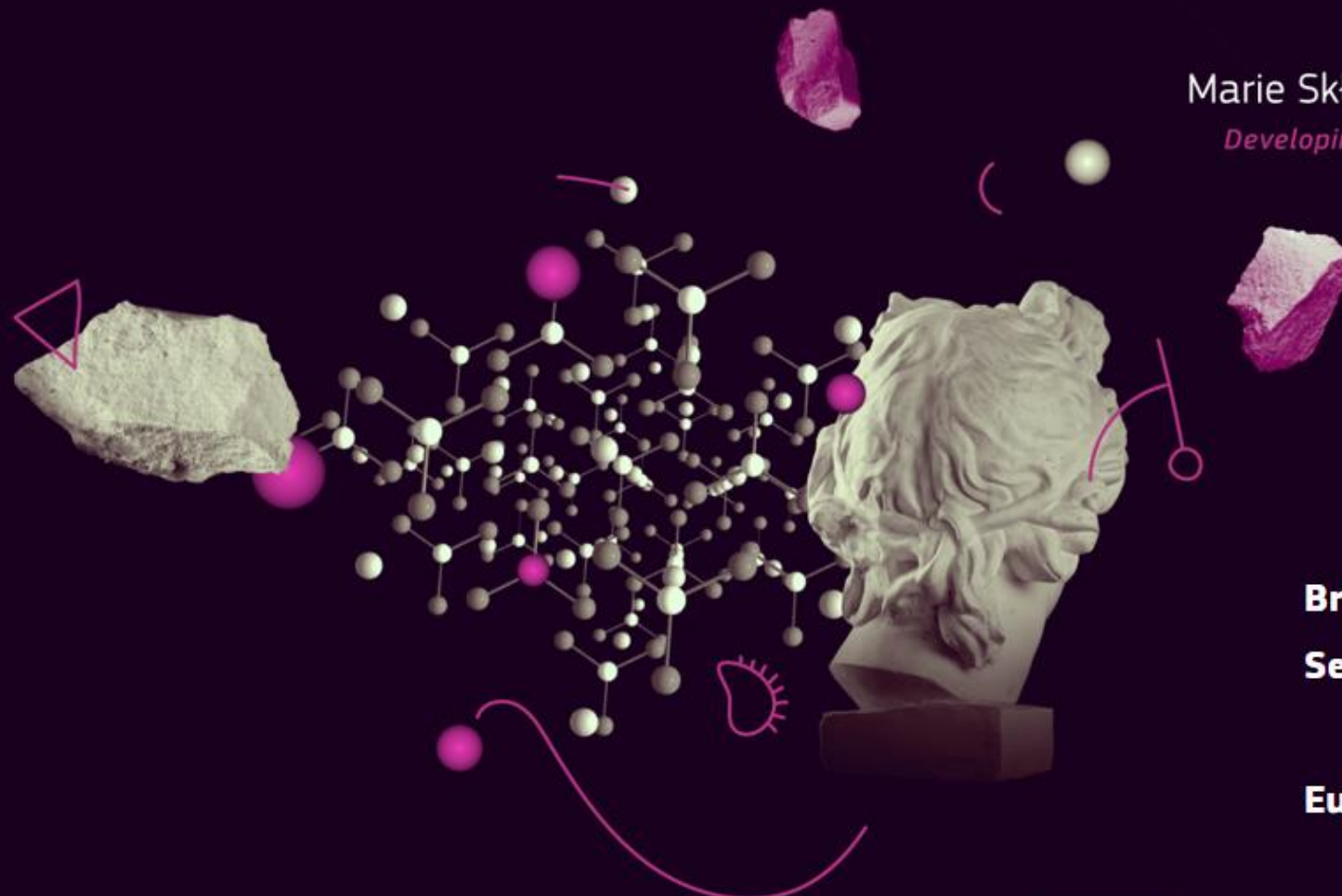




**MSCA**

Marie Skłodowska-Curie Actions

*Developing talents, advancing research*



# Staff Exchanges

**Brito FERREIRA**

**Session d'information nationale - 9 novembre 2023**

**European Research Executive Agency**

Marie Skłodowska-Curie Actions

@REA\_research, @MSCAactions

# The Actions

## The MSCA have **5** main actions

### Doctoral Networks

**implement doctoral programmes** (including joint doctorates and industrial doctorates) **by international partnerships** of organisations from different sectors. They train highly-skilled doctoral candidates, stimulate their creativity, enhance their innovation capacities and boost their employability in the long-term.

### Postdoctoral Fellowships

**support researchers' careers and foster excellence in research and innovation.** Researchers holding a PhD can carry out their research activities, acquire new skills and develop their careers abroad, whilst developing competences in non-academic sectors and working within interdisciplinary teams.

### Staff Exchanges

**encourage short-term international and inter-sectoral exchanges of research and innovation staff** through sustainable, collaborative projects in Europe and beyond. By doing so, they enhance knowledge and skills transfer and increase organisations' research and innovation capacities.

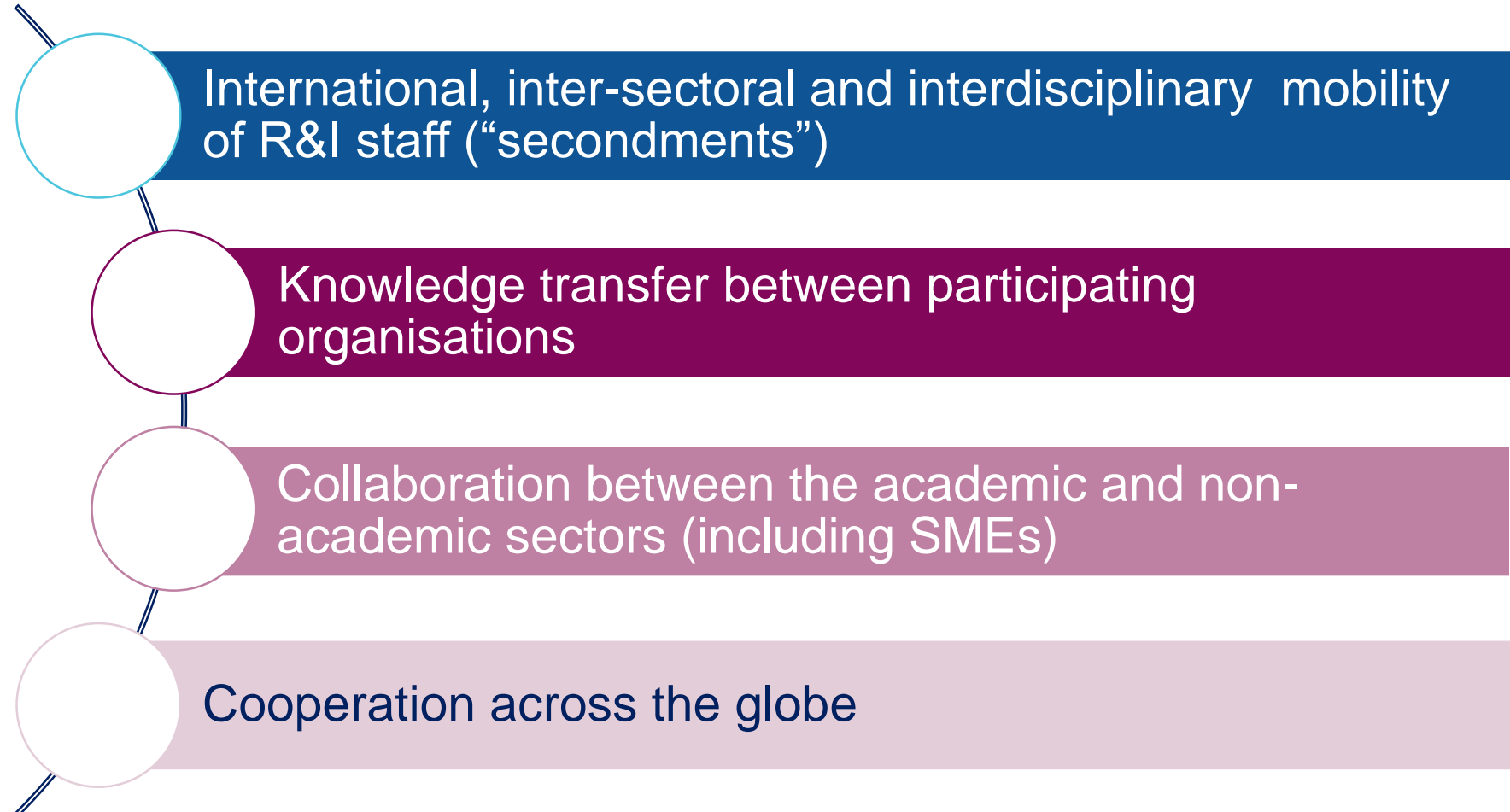
### MSCA and Citizens

**brings research and researchers closer to children, families and the public at large** through the European Researchers' Night - the annual research communication and promotion event taking place at the end of September across EU Member States and Horizon Europe Associated Countries.

### COFUND

**co-finances regional, national and international doctoral and postdoctoral programmes for researchers' training and career development.** The COFUND action spreads MSCA's best practices by setting high standards and excellent working conditions, and boosts training and international, interdisciplinary and inter-sectoral mobility.

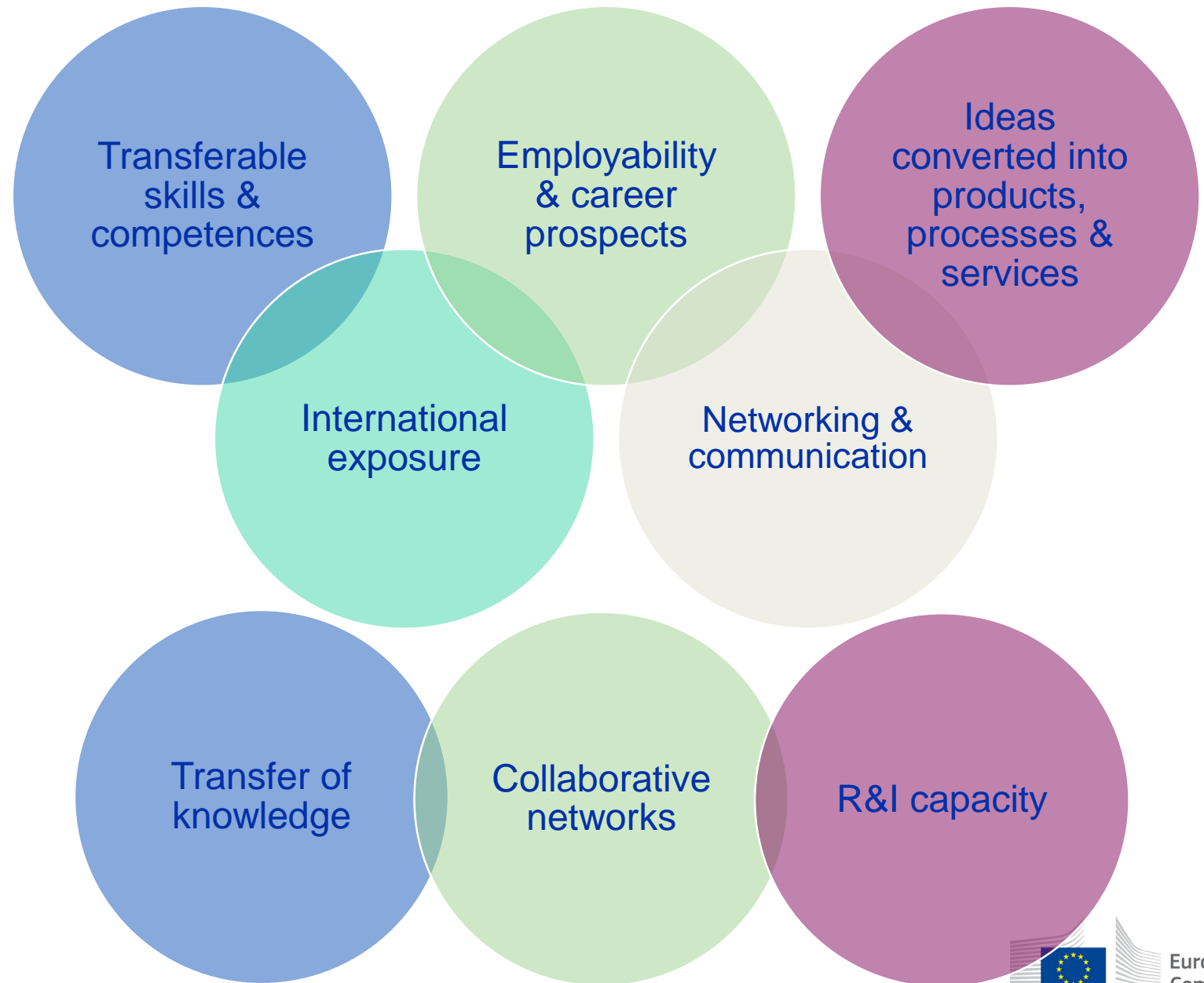
# Objectives



# Added value

## Staff members

## Organisations



# Eligible participants

## Academic sector



Consortium of min. 3 legal entities in 3 different countries, 2 of which in a different EU Member State or HE Associated Country



## Non-academic sector

If all organisations from the **same sector**, there must be at least 1 organisation from a non-associated Third Country\*

\* Secondments within EU MS or HE AC must be between different sectors (between academic and non-academic), except for interdisciplinary secondments, which must be limited to a maximum of 1/3 of the total implemented months.

# Eligible staff



Any type of staff involved in R&I activities (researchers, administrative staff, managerial staff, technical staff)

Each staff member is seconded for a period of **1 to 12 months** (may be split into several stays)

## Seconded staff members

Researchers at any career stage (e.g. from doctoral candidates to postdoctoral researchers)

Staff needs to be devoted **full-time** to the action during the secondment



Actively engaged in research and/or innovation activities for at least **1 month** prior at the sending institution

After the secondment, staff should **return to their sending institution**

# Eligible exchanges

"HOSTING"  
(receiving seconded staff members)

	"HOSTING" (receiving seconded staff members)			
	Academic organisation in MS/AC (1)	Non-academic organisation in MS/AC (2)	Associated Partners eligible for funding	Associated Partners non-eligible for funding
"SENDING" (sending staff members from organization)	Academic organisation in MS/AC (1)	1/3	✓	✓
Non-academic organisation in MS/AC (2)	✓	1/3	✓	✓
Associated Partners* eligible for funding	✓	✓	✗	✗
Associated Partners non-eligible for funding	✗	✗	✗	✗

1/3 This symbol refers to same sector secondments up to 1/3 of the total implemented secondments funded by the EU as long as they are demonstrated to be interdisciplinary.

\* Associated Partners eligible for funding (see List of Participating Countries in Horizon Europe)

# Same-sector secondments in Europe (MS/AC)



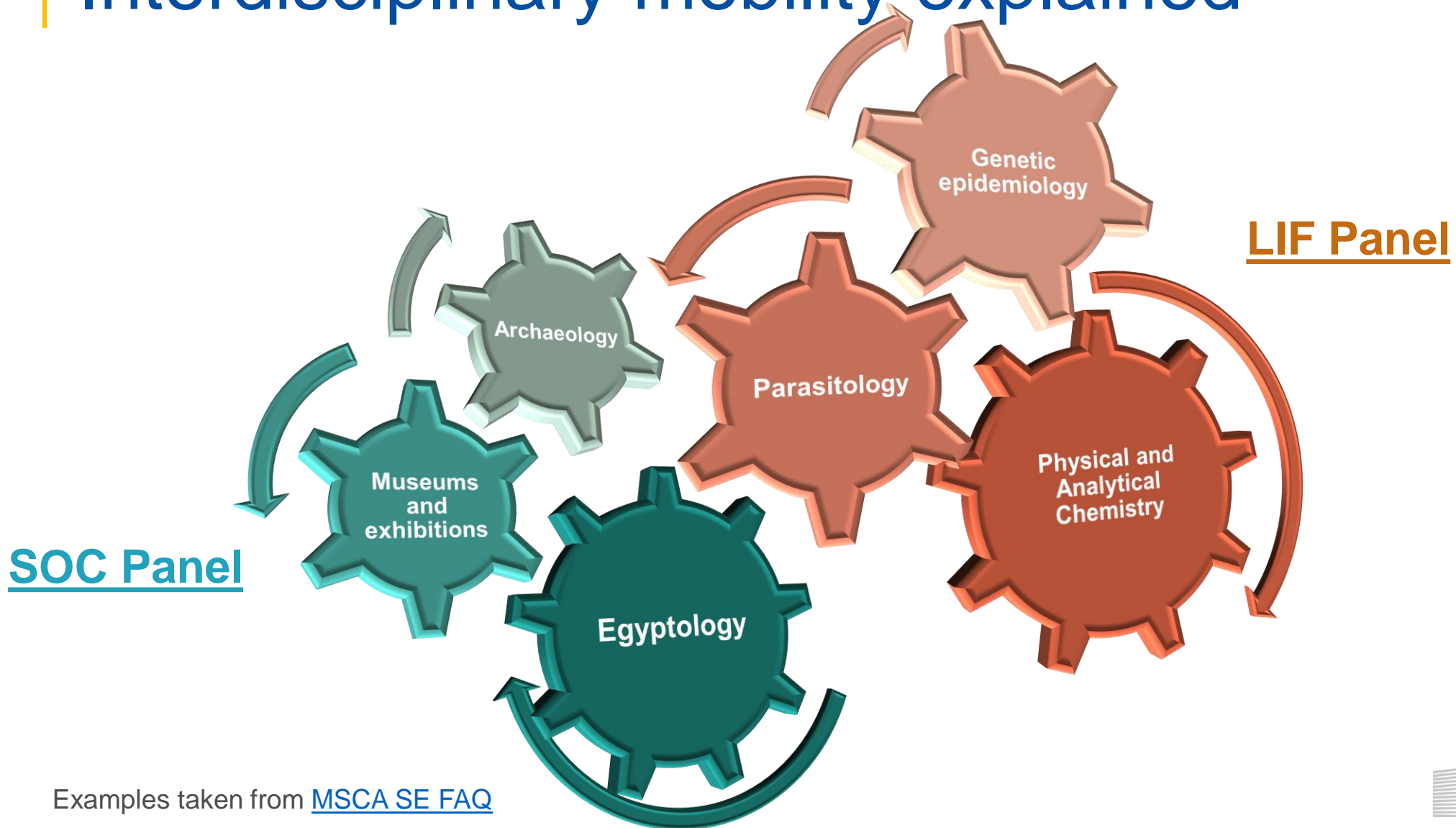
$\leq 1/3$  of the total secondments funded by the EU, if considered **Interdisciplinary**

Interdisciplinary secondments integrate aspects from **two or more different scientific disciplines**.

Important: **scientific panels + descriptors/first level MSCA keywords** from proposal form part A (see [REA Website](#))



# Interdisciplinary mobility explained



Examples taken from [MSCA SE FAQ](#)

# What does Staff Exchanges fund?





# Focus on the proposal

# Proposal Submission



Funding & tender opportunities  
Single Electronic Data Interchange Area (SEDIA)

EN

Register

Login

HOME SEARCH FUNDING & TENDERS HOW TO PARTICIPATE PROJECTS & RESULTS WORK AS AN EXPERT SUPPORT



## MSCA Staff Exchanges 2023

HORIZON-MSCA-2023-SE-01-01

Topic Call for proposal

### Internal navigation

General information

Topic description

Destination

Conditions and documents

Partner search announcements

Start submission

**Programme**  
Horizon Europe Framework Programme (HORIZON)

€ Budget overview

**Call**  
MSCA Staff Exchanges 2023 (HORIZON-MSCA-2023-SE-01)

**Type of action**  
HORIZON-TMA-MSCA-SE HORIZON TMA MSCA  
Staff Exchanges

**Type of MGA**  
HORIZON Unit Grant [HORIZON-AG-UN]

Open for submission

**Deadline model**  
single-stage

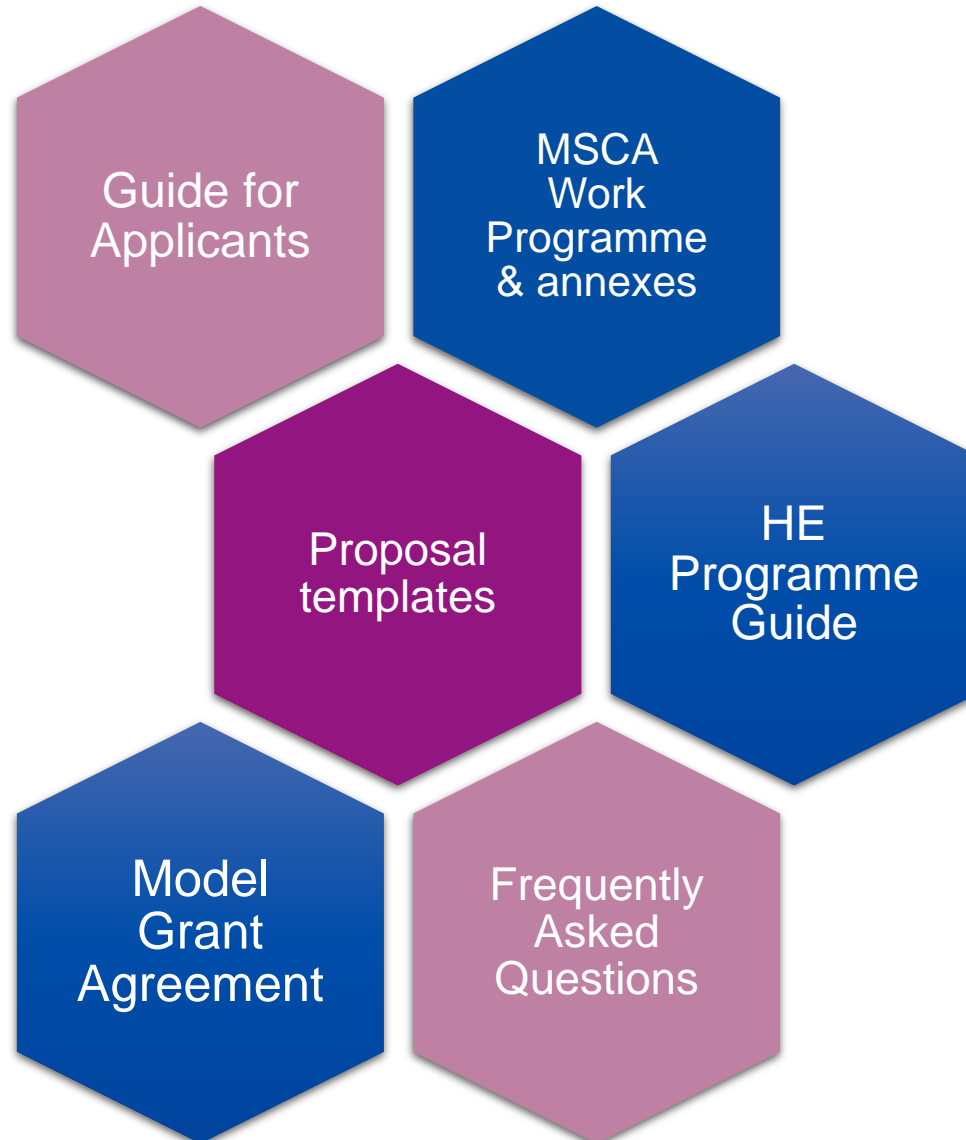
**Opening date**  
05 October 2023

**Deadline date**  
28 February 2024 17:00:00 Brussels time

Apply! <https://ec.europa.eu/info/funding-tenders/opportunities/portal/>



# Reference Documents



# Proposal documents



Funding & tender opportunities  
Single Electronic Data Interchange Area (SEDIA)



SEARCH FUNDING & TENDERS ▼

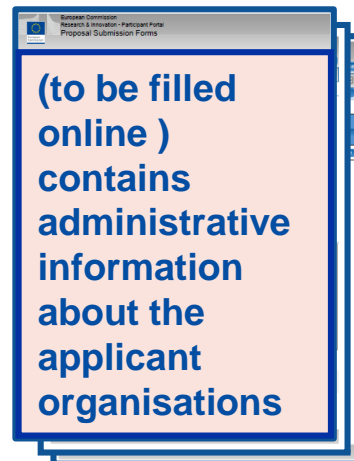
HOW TO PARTICIPATE ▼

PROJECTS & RESULTS

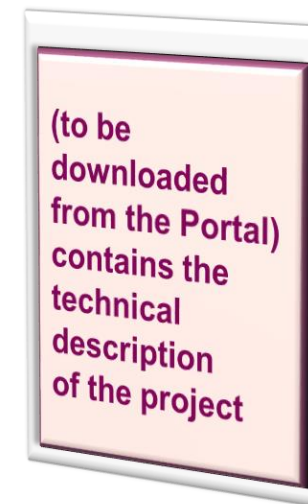
WORK AS AN EXPERT

SUPPORT ▼

## Part A (structured data)



## Part B (description of action)




# Evaluation criteria

Excellence	Impact	Quality and efficiency of the implementation
Quality and pertinence of the project's <b>research and innovation objectives</b> (and the extent to which they are ambitious, and go beyond the state of the art)	Developing new and lasting <b>research collaborations</b> , achieving <b>transfer of knowledge</b> between participating organisations and contributing to improving <b>research and innovation potential</b> at the European and global level	Quality and effectiveness of the <b>work plan</b> , assessment of <b>risks</b> , and appropriateness of the effort assigned to work packages
Soundness of the <b>proposed methodology</b> (including i3 approaches, consideration of the gender dimension and other diversity aspects, and the quality of open science practices)	Credibility of the measures to enhance the <b>career perspectives</b> of staff members and contribution to their <b>skills development</b>	Quality, capacity and role of each participant, including <b>hosting arrangements</b> and extent to which the consortium as a whole brings together the necessary expertise
Quality of the proposed <b>interaction between the participating organisations</b> in light of the research and innovation objectives	Suitability and quality of the measures to <b>maximise expected outcomes and impacts</b> , as set out in the dissemination and exploitation plan, including communication activities	
	The magnitude and importance of the project's contribution to the expected <b>scientific, societal and economic impacts</b>	
<b>50%</b>	<b>30%</b>	<b>20%</b>



# Evaluation

## Formula for Staff Exchanges success stories


$$= (E + I) \text{Impact}$$

**E**xcellence and **I**mplementation are closely interlinked!





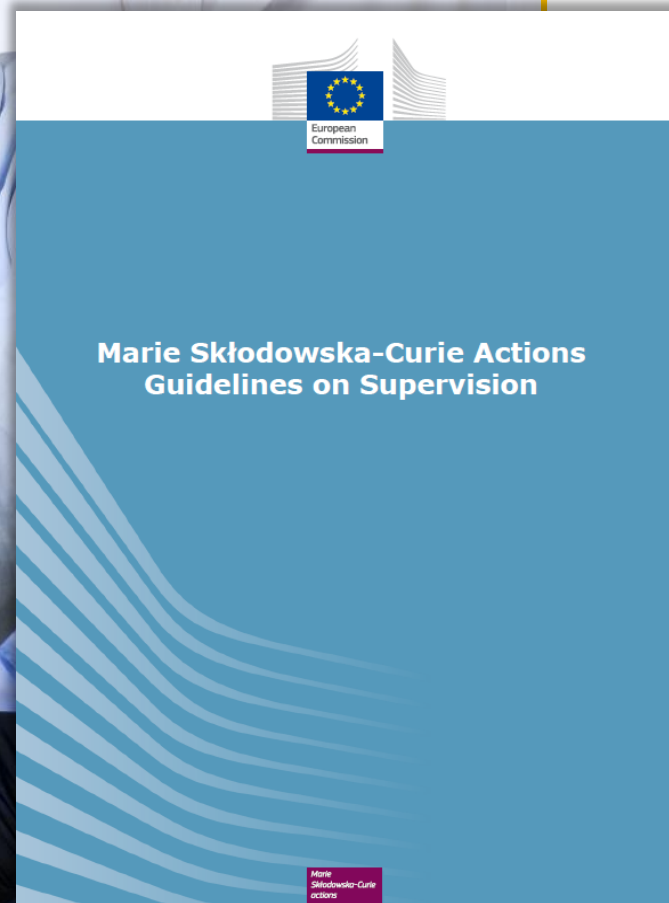
# Recommended Guidelines in the HE Work programme

Horizon Europe Work Programme :

*“All MSCA-funded projects are encouraged to follow the recommendations outlined in the **Guidelines for MSCA supervision**”.*

A set of recommendations to be adopted on a best effort basis by participants in the programme – both individuals and institutions – e.g. from research support and career development to well-being, conflict resolution and training for supervisors.

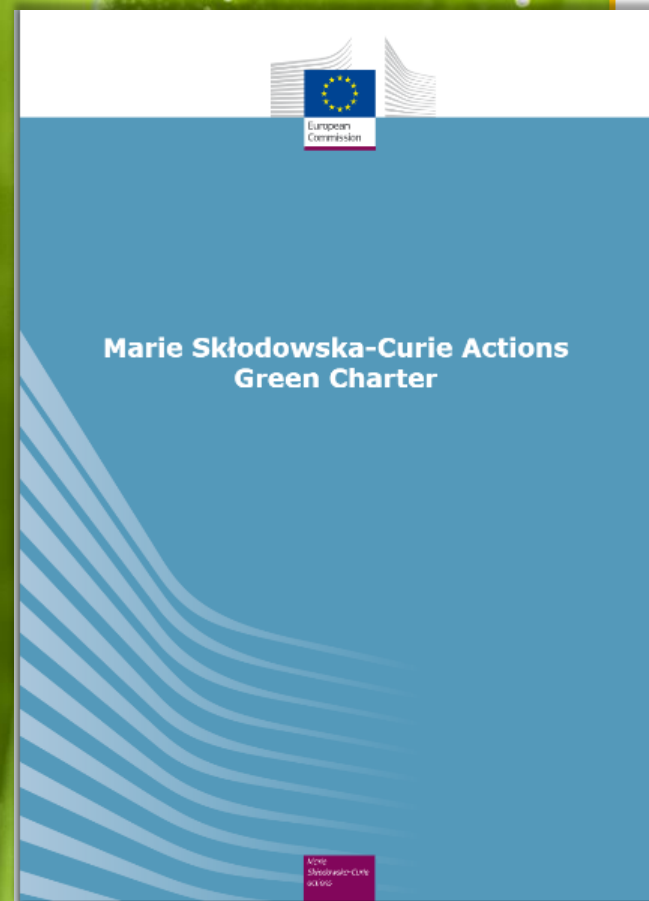
<https://ec.europa.eu/research/mariecurieactions/about-msca/msca-guidelines-supervision>



# Recommended Guidelines in the HE Work programme

Horizon Europe Work Programme :  
*“All MSCA-funded projects are encouraged to address the principles of the **MSCA Green Charter** and implement measures to minimize the environmental footprint of their activities”.*

<https://ec.europa.eu/research/mariecurieactions/green-charter>



# Tips and tricks

## **Closely follow the call requirements**

Be in line with the action's objectives and expected outcomes

## **Follow available guidelines**

Use the structure provided in the template and address all the evaluation criteria

## **Highlight the EU dimension**

Show that your proposal addresses EU policy priorities and/or societal challenges

## **Get a second opinion**

Have your proposal proof-read by a colleague and pre-screened by your NCP

## **Sustainability of collaboration**

Describe the benefits of cooperation and how they can go beyond this project

## **Contact your National Contact Point (NCP)**

# Next MSCA SE call

Call	2023	
	Opening Closing	Budget (M€)
Staff Exchanges	05/10/2023 28/02/2024	78,5



+ 8% more  
budget vs  
2021



# Questions and answers



# Merci!

