

# Programme Marie Sklodowska-Curie

Hoel Queffelec

CNRS, IMAG

11 Mai 2023



Australian  
National  
University

# Mon parcours en quelques lignes

- Thèse de mathématiques en 2013.
- Post-doc en Australie 2014–2015.
- CR CNRS à Montpellier depuis 2015.

## Pourquoi Marie Curie ?

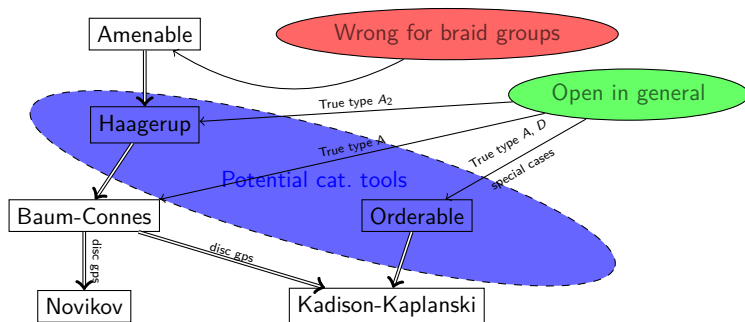
Montpellier



Image Wikipedia Duesentrieb

Canberra

# Projet MSCA



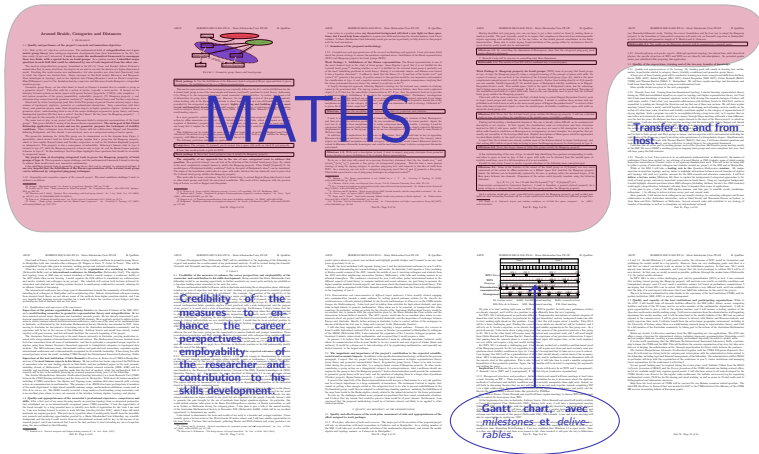
# Ok, des projets...

- **2019** : HiQua – liste d'attente.
- **2020** : AcMe – rejeté.
- **2021** : ABCD – liste d'attente – accepté 2 semaines avant mon départ.

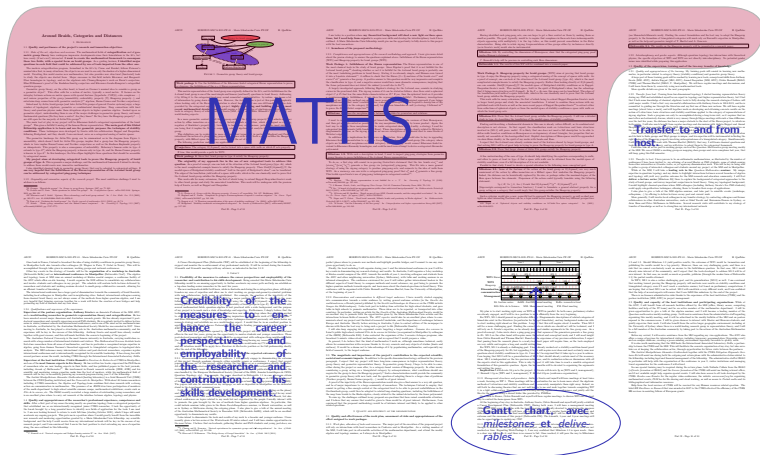
MSCA-PF-2021: Cumulative percentage of proposals above threshold, with a given score or higher (funding range marked in green)																
Number of eligible proposals	1062 proposals	123 proposals	1062 proposals	896 proposals	1672 proposals	163 proposals	847 proposals	1624 proposals	65 proposals	9 proposals	70 proposals	119 proposals	119 proposals	13 proposals	60 proposals	344 proposals
Cut off score for funding*	92.8	92.0	92.8	90.6	94.4	92.4	92.2	93.6	92.0	83.8	95.0	95.8	96.8	92.0	94.2	92.8
Score equal to or above	EF-CHE	EF-ECO	EF-ENG	EF-ENV	EF-LIF	EF-MAT	EF-PHY	EF-SOC	GF-CHE	GF-ECO	GF-ENG	GF-ENV	GF-LIF	GF-MAT	GF-PHY	GF-SOC
100	0.38%	0.00%	1.05%	0.58%	0.66%	1.84%	0.12%	0.92%	1.54%	0.00%	1.43%	0.84%	0.00%	0.00%	0.00%	0.56%
99	1.41%	0.00%	1.41%	1.38%	1.50%	3.68%	0.71%	1.91%	1.54%	0.00%	2.98%	3.38%	2.52%	0.00%	1.45%	2.03%
98	3.30%	0.81%	3.23%	3.01%	3.90%	4.29%	2.01%	3.88%	1.54%	0.00%	8.57%	5.04%	7.69%	5.04%	4.36%	4.36%
97	5.08%	3.25%	4.79%	5.47%	6.22%	7.36%	2.72%	5.70%	3.08%	0.00%	10.00%	9.94%	10.00%	10.00%	2.90%	6.40%
96	7.53%	6.80%	6.72%	7.22%	9.15%	8.50%	4.13%	8.25%	6.15%	0.00%	14.29%	14.29%	15.15%	7.69%	2.90%	9.30%
95	9.23%	6.50%	9.32%	9.62%	11.96%	11.96%	6.73%	10.65%	6.10%	0.00%	15.71%	21.85%	18.49%	7.69%	7.20%	11.24%
94	11.02%	8.13%	11.60%	12.61%	15.31%	9.82%	9.21%	12.87%	7.69%	0.00%	18.57%	25.21%	21.85%	7.69%	17.30%	13.85%
93	13.66%	10.07%	13.50%	16.07%	19.08%	12.88%	11.92%	15.83%	13.85%	0.00%	24.29%	27.73%	26.89%	7.69%	23.10%	15.90%
92	16.10%	15.48%	15.68%	19.80%	22.13%	15.34%	14.70%	18.90%	16.60%	11.11%	30.00%	31.92%	31.09%	15.36%	27.54%	17.44%
91	18.89%	16.26%	18.54%	22.44%	24.96%	17.79%	18.99%	21.60%	24.62%	11.11%	32.86%	35.61%	32.77%	15.36%	36.23%	21.22%
90	20.90%	16.26%	20.44%	27.34%	27.63%	22.70%	21.61%	23.80%	30.77%	11.11%	37.14%	36.15%	35.26%	15.36%	43.48%	22.67%
89	23.73%	17.89%	22.43%	29.91%	31.04%	28.22%	25.62%	26.29%	33.85%	11.11%	38.57%	39.50%	39.50%	15.36%	46.36%	25.87%
88	26.18%	18.70%	24.81%	32.40%	33.75%	29.45%	28.56%	28.45%	36.92%	11.11%	40.00%	42.86%	43.70%	23.06%	50.72%	29.07%
87	28.15%	23.56%	27.47%	35.84%	36.76%	32.52%	32.35%	30.85%	38.40%	11.11%	41.43%	46.22%	44.54%	30.77%	50.72%	31.10%
86	31.73%	25.20%	30.42%	39.17%	39.29%	36.20%	34.12%	32.82%	40.00%	11.11%	45.71%	51.26%	45.38%	38.46%	52.17%	32.56%
85	34.46%	27.64%	32.70%	41.52%	41.85%	38.65%	38.72%	34.69%	44.62%	11.11%	48.57%	53.78%	47.84%	53.85%	60.87%	35.76%
84	37.29%	31.71%	34.89%	44.06%	45.18%	42.94%	42.19%	37.32%	57.14%	11.11%	51.43%	49.09%	53.85%	62.32%	67.21%	37.21%
83	40.30%	33.33%	36.88%	45.76%	47.73%	45.40%	45.57%	39.66%	62.31%	22.22%	55.71%	60.50%	53.85%	63.85%	66.67%	40.12%
82	44.16%	36.69%	39.26%	49.50%	50.30%	47.85%	49.23%	42.36%	66.92%	22.22%	57.14%	64.71%	54.62%	61.54%	66.67%	43.60%
81	46.88%	38.64%	42.11%	53.40%	53.23%	53.98%	52.54%	45.38%	69.00%	22.22%	57.14%	68.59%	62.18%	61.54%	68.12%	46.80%
80	49.62%	44.72%	43.82%	56.81%	55.68%	55.21%	55.73%	47.17%	69.00%	33.33%	58.57%	68.91%	68.07%	61.54%	72.40%	49.13%
79	52.92%	47.10%	47.10%	58.26%	58.37%	59.51%	58.80%	49.88%	69.00%	44.44%	62.86%	70.59%	69.70%	61.54%	73.91%	50.87%
78	56.09%	49.59%	49.62%	60.83%	61.18%	61.86%	61.39%	52.22%	69.00%	55.56%	64.99%	73.11%	76.93%	75.36%	75.36%	53.29%
77	59.20%	52.00%	50.86%	62.72%	64.35%	66.26%	64.06%	54.68%	69.00%	55.56%	67.14%	73.11%	73.93%	76.93%	79.71%	55.82%
76	62.24%	54.47%	52.85%	64.73%	67.17%	67.48%	66.71%	56.65%	64.62%	55.56%	71.43%	79.83%	75.63%	76.93%	81.30%	57.60%
75	63.75%	56.10%	55.19%	66.74%	69.20%	71.78%	68.71%	59.11%	64.62%	55.56%	72.86%	80.67%	76.47%	84.62%	82.61%	59.59%
74	65.62%	59.35%	57.32%	67.86%	70.83%	73.01%	70.90%	60.78%	69.23%	55.56%	74.29%	82.35%	77.31%	84.62%	82.61%	61.24%
73	67.89%	61.79%	59.41%	69.08%	72.19%	74.23%	73.67%	62.68%	70.77%	55.56%	78.57%	83.19%	79.83%	84.62%	84.06%	63.08%
72	69.77%	62.66%	61.69%	70.76%	73.86%	76.07%	75.80%	64.22%	72.31%	66.67%	80.00%	83.19%	81.91%	84.62%	86.86%	65.70%
71	71.94%	65.68%	63.15%	72.21%	75.42%	77.21%	77.68%	65.62%	75.38%	66.67%	81.43%	84.67%	84.06%	84.62%	88.41%	66.28%
70	74.11%	68.29%	65.40%	74.47%	77.27%	79.75%	79.40%	67.67%	76.92%	66.67%	82.86%	87.39%	85.71%	84.62%	90.41%	69.77%
Percentage of proposals below threshold (<70)	25.86%	31.71%	34.90%	25.96%	22.73%	20.25%	20.94%	32.33%	23.08%	33.33%	17.14%	12.61%	14.29%	15.36%	11.99%	30.23%

\* your proposal can have the same score as the cut off score yet not be funded, due to additional priorities (as defined in Work Programme) and the tie-break ranking procedure by the Panel.

## B1, le cœur scientifique



# B1, le cœur scientifique



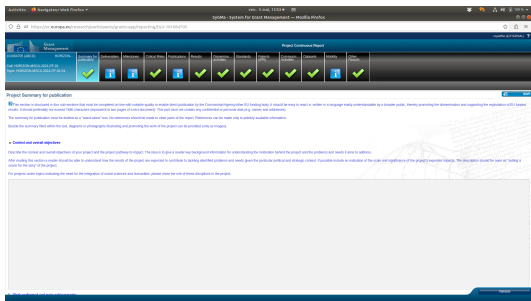
Lisez, faites relire (SPV, collègues,...), prévoyez du temps.

# Mise en place

- négociations CNRS/Commission européenne.
- établissement d'une convention CNRS/institution hors Europe.
- avis du FSD, transfert du dossier à la DR16.
- budget géré par le labo de la phase retour mais partiellement transféré à l'institution partenaire.

## Mise en place

- négociations CNRS/Commission européenne.
- établissement d'une convention CNRS/institution hors Europe.
- avis du FSD, transfert du dossier à la DR16.
- budget géré par le labo de la phase retour mais partiellement transféré à l'institution partenaire.







Bon courage !