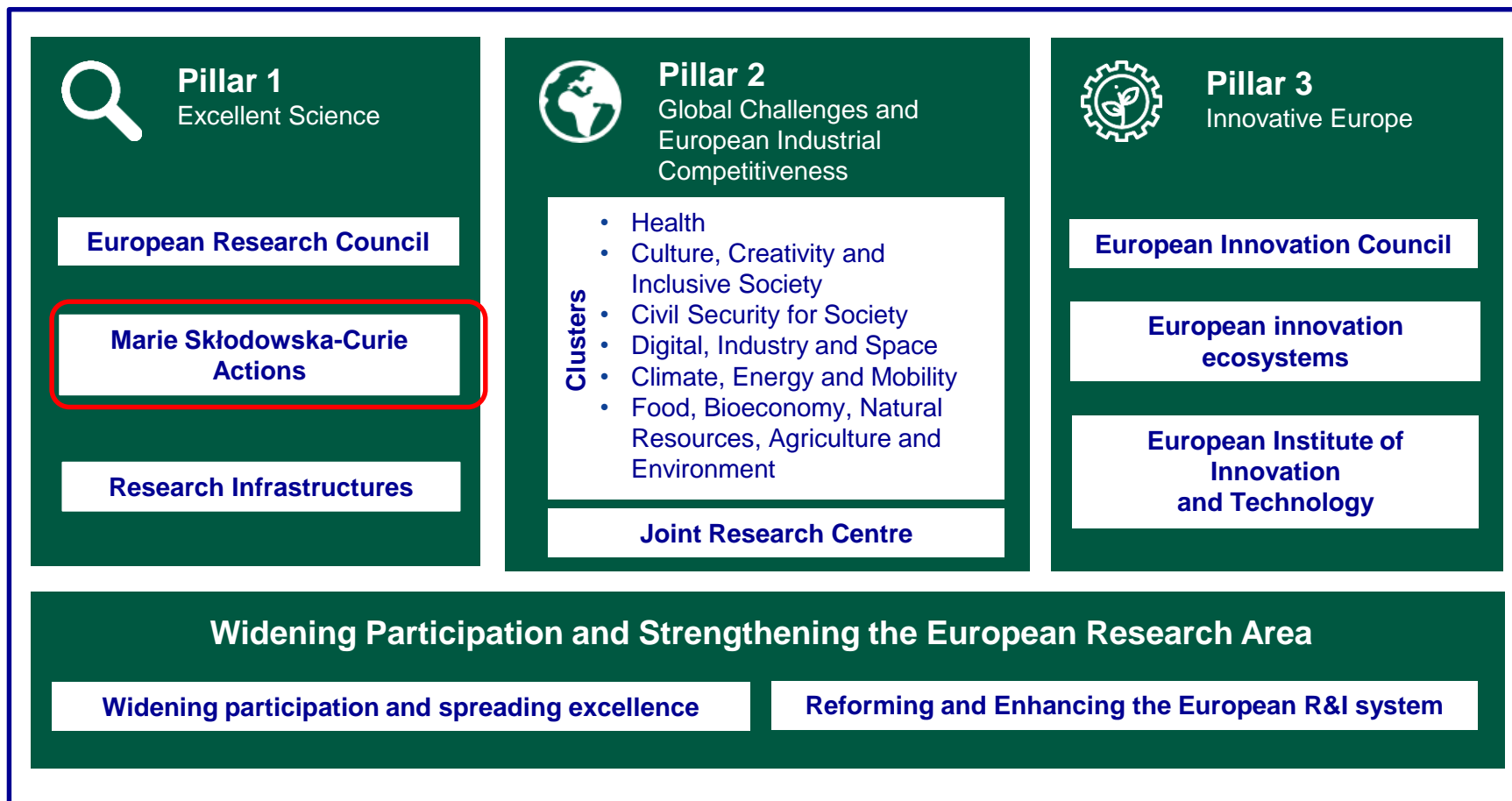






# **MSCA Postdoctoral Fellowships : tool for international mobility of researchers**

MSCA NCP

# Horizon Europe structure



**Excellent Science (Pillar 1):** reinforcing and extending the excellence of the Union's science base



Marie Skłodowska-Curie  
Actions

“YOU CANNOT HOPE TO BUILD A BETTER WORLD  
WITHOUT IMPROVING THE INDIVIDUALS.”

MARIE SKŁODOWSKA-CURIE

# MSCA key features

- **Support the training and career development** of researchers from **all over the world** through excellent doctorates, postdoctoral fellowships and collaborative projects
- Stimulating **international, inter-sectoral and interdisciplinary** cooperation. Participation of **non-academic sector**, especially industry and SMEs
- For researchers at **every stage** of their career
- Support excellent research in all domains (**bottom-up approach**)
- Promotion of **attractive working and employment** conditions (financing rate of up to 100% )





# MSCA 2021-2027



1. MSCA Doctoral Networks → *networks training doctoral candidates*
2. MSCA Postdoctoral Fellowships → *postdoctoral researchers*
3. MSCA Staff Exchanges → *any type of research(-related) staff*
4. MSCA COFUND → *co-funding training programmes*
5. MSCA and Citizens → *public outreach events*



- **Mono-beneficiary** action (supporting individual projects)
- Support **post-doctoral research** and **careers**
- Cover **all research domains** (bottom-up approach)
- **8 scientific panels:** *CHE, SOC, ECO, ENG, ENV, LIF, MAT, PHY*
- Unique **mobility rule** : not resided, worked, studied **> 12 months in the 3 years** in the country of the Host Institution (Third country host for the GF)
- Develop skills for academia and beyond – build bridges with academia
  - additional up to 6 months **placements in the non-academic sector** at the end of EF and GF projects
- **Secondments worldwide** (except for the return phase of the GF)

# MSCA Postdoctoral Fellowships : main features

## Two types of fellowships :

### European Fellowships (EF)

- HI located in a Member State or Associated Country
- Duration : 12 to 24 months

### Global Fellowships (GF)

- Mobility towards a third country
- 24 to 36 months (including a mandatory 12 months return phase in a Member State or Associated Country)

# European Fellowships (EF)

A researcher may submit only  
one proposal per call

For fellows  
coming to  
or  
moving within  
Europe



12-24 months

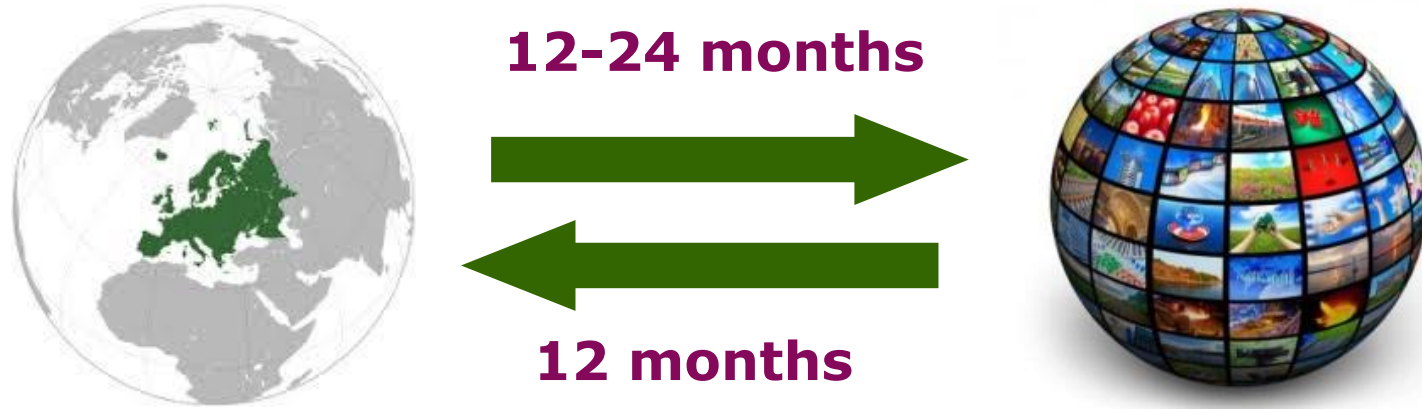


*... before call deadline*

## **MOBILITY RULE**

Not resided, worked, studied > 12  
months  
in the 3 years in the country of the  
beneficiary

## Global Fellowships (GF)



**For fellows from Europe going to TC  
and then  
returning to Europe**



# Global Fellowships (GF)

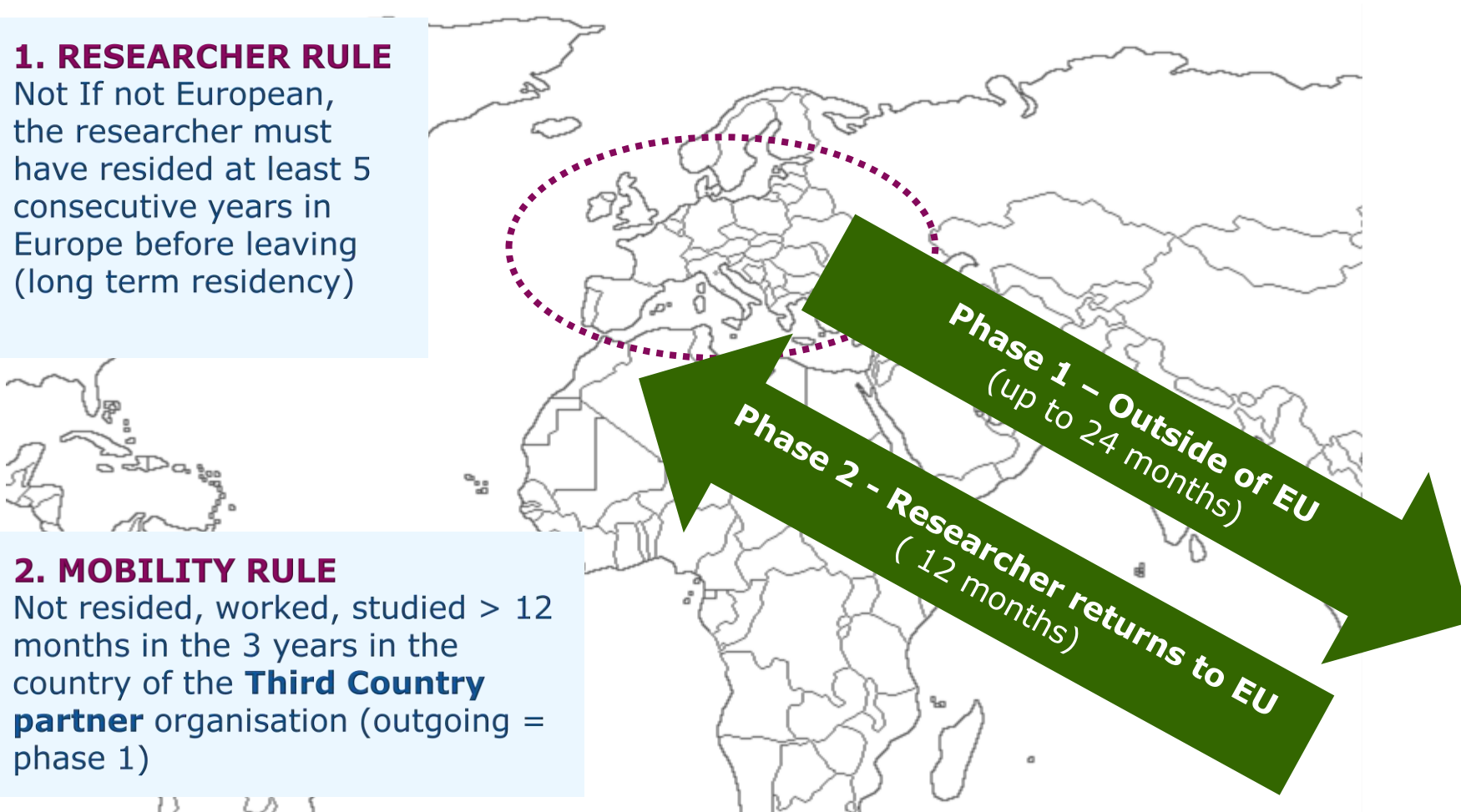
*...before call deadline*

## 1. RESEARCHER RULE

Not If not European,  
the researcher must  
have resided at least 5  
consecutive years in  
Europe before leaving  
(long term residency)

## 2. MOBILITY RULE

Not resided, worked, studied > 12  
months in the 3 years in the  
country of the **Third Country**  
**partner** organisation (outgoing =  
phase 1)



# Secondments worldwide

(except for the return phase of the GF)



**Maximum 1/3 of the total project duration**

Transfer of knowledge to contribute significantly to the impact of the fellowship

Not mandatory

Short stays are also possible

# MSCA Postdoctoral Fellowships : main features

## Which researchers?



### **Postdoctoral Researchers**

- Have successfully defended a PhD at the call deadline
- <8 years of research experience after the PhD



### **Any Nationality \***

*\* (residency condition for nationals of non-Member States/Associated countries for Global fellowships)*

## Which organisations?



### **Academic sector**

- Higher education establishments (awarding academic degrees)
- Non-profit research organisations (primary mission research)
- International European interest organisations (e.g. CERN, EMBL)



### **Non-academic sector**

- Any entity not included in the academic sector:
- e.g. large companies, SMEs, NGOs, museums, hospitals, international organisations (e.g. UN, WHO)

## Which countries?

### **EU Member States (MS):**

27 countries

**Associated Country(AC):** (Albania, Armenia, Bosnia and Herzegovina, Faroe Islands, Georgia, Iceland, Israel, Kosovo, Moldova, Montenegro, North Macedonia, Norway, Serbia, Tunisia, Turkey)

**Third Countries (TC):** any other country (*only as partner organization under Global Fellowships*)

List of participating countries in Horizon Europe :

[https://ec.europa.eu/info/funding-tenders/opportunities/docs/2021-2027/common/guidance/list-3rd-country-participation\\_horizon-atom\\_en.pdf](https://ec.europa.eu/info/funding-tenders/opportunities/docs/2021-2027/common/guidance/list-3rd-country-participation_horizon-atom_en.pdf)



# MSCA Postdoctoral Fellowships : funding



## Unit contributions

MSCA Postdoctoral Fellowships	Contributions for the recruited researcher per person-month					Institutional unit contributions per person-month	
	Living allowance	Mobility allowance	Family allowance (if applicable)	Long- term leave allowance (if applicable)	Special needs allowance (if applicable)	Research, training and networking contributions	Management and indirect contributions
	EUR 5 080	EUR 600	EUR 660	EUR 5 680 x % covered by the beneficiary	requested unit <sup>52</sup> x (1/number of months)	EUR 1 000	EUR 650

<sup>52</sup> The pre-defined categories are as follows: EUR 3 000, EUR 4 500, EUR 6 000, EUR 9 500, EUR 13 000, EUR 18 500, EUR 27 500, EUR 35 500, EUR 47 500 and EUR 60 000.

# MSCA PF call 2023



Call Opening:	<b>12 April 2023</b>
Call Deadline:	<b>13 September 2023</b>
Evaluation of proposals:	<b>November 2023 - January 2024</b>
Launch Grant preparation:	<b>Early March 2024</b>
Starting dates:	<b>1 April 2024 - 1 September 2025</b>
Call budget :	<b>260,47 M€</b>

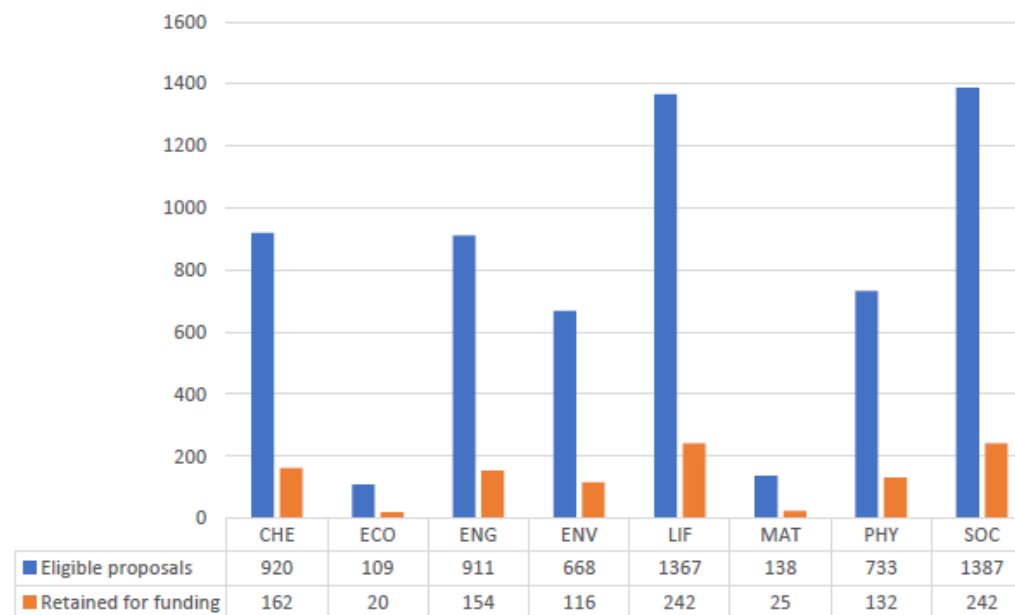
# Evaluation criteria

Excellence   50%	Impact   30%	Mise en œuvre   20%
Quality and pertinence of the project's research and innovation objectives (and the extent to which they are ambitious, and go beyond the state of the art)	Credibility of the measures to enhance the career perspectives and employability of the researcher and contribution to his/her skills development	Quality and effectiveness of the work plan, assessment of risks and appropriateness of the effort assigned to work packages
Soundness of the proposed methodology (including interdisciplinary approaches, consideration of the gender dimension and other diversity aspects if relevant for the research project, and the quality of open science practices)	Suitability and quality of the measures to maximise expected outcomes and impacts, as set out in the dissemination and exploitation plan, including communication activities	Quality and capacity of the host institutions and participating organisations, including hosting arrangements
Quality of the supervision, training and of the two-way transfer of knowledge between the researcher and the host	The magnitude and importance of the project's contribution to the expected scientific, societal and economic impacts	
Quality and appropriateness of the researcher's professional experience, competences and skills		

## Proposals retained for funding - EF

Action	Eligible proposals	Main list
PF-EF	6233	1093
Grand total	6909	1235

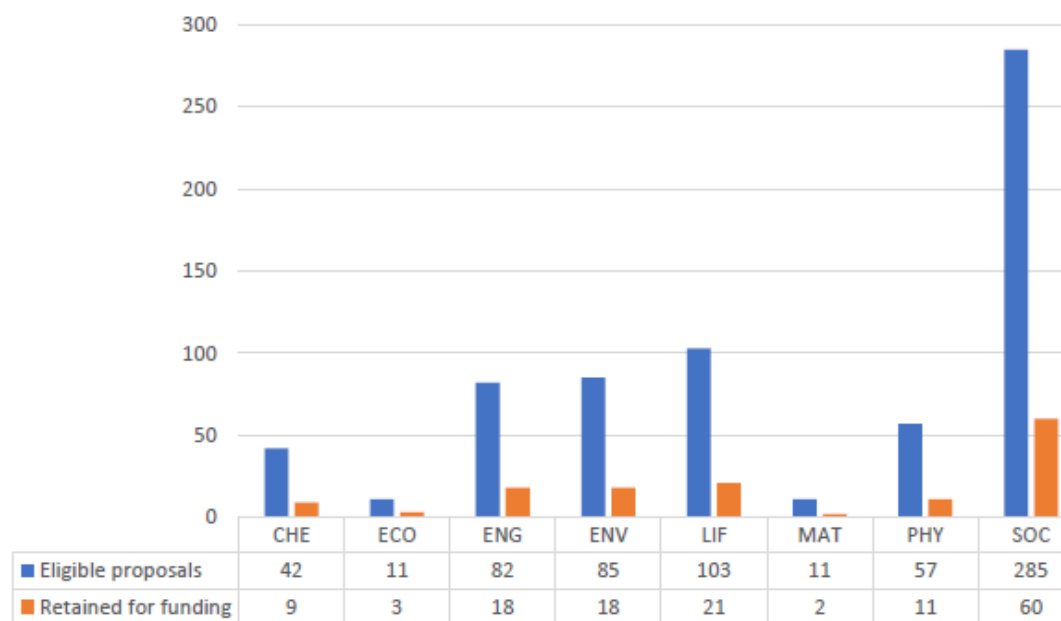
Panel	Success rate EF
CHE	17,61%
ECO	18,35%
ENG	16,90%
ENV	17,37%
LIF	17,70%
MAT	18,12%
PHY	18,01%
SOC	17,45%
Grand Total	17,54%



## Proposals retained for funding - GF

Action	Eligible proposals	Main list
PF-GF	676	142
<b>Grand total</b>	<b>6909</b>	<b>1235</b>

Panel	Success rate GF
CHE	21,43%
ECO	27,27%
ENG	21,95%
ENV	21,18%
LIF	20,39%
MAT	18,18%
PHY	19,30%
SOC	21,05%
<b>Grand Total</b>	<b>21,01%</b>





# ERA-fellowships : an additional opportunity to be funded

If you have passed all the MSCA Postdoctoral Fellowships thresholds, but have not been ranked on the main list and you have ticked the 'ERA Fellowship' box in your proposal : **your proposal will automatically be considered for the ERA Fellowships call.**

It is an additional opportunity to obtain funding in a **one single evaluation!**

Proposals are eligible for ERA Fellowships if they are submitted by the host institution located in a Widening country/region



# ERA Fellowships

**Aim :** To attract talented postdoctoral students to host institutions located in the eligible Widening countries

**Who?**

- Excellent postdoctoral researchers who undertake a mobility to a Widening country/region
- Academic and non-academic host institutions located in Widening countries/regions

**Activities :**

- Individual fellowship for mobility
- Collaborations with other academic/non-academic sectors ; secondments in other organisations

**Modalities :** up to 2 years – 50 projects to be funded/year  
8M€/year



# Postdoctoral candidate - how to apply?

Step 1 Calls for proposals are published on the European Commission Funding and Tenders Portal. Check your eligibility: read carefully the call text and the Guide for Applicant



Horizon Europe Programme

Guide for Applicants

Marie Skłodowska-Curie Actions – Postdoctoral Fellowships (PF)

Version 1.0 - 2021  
22 June 2021



European  
Commission

## Funding & tender opportunities

Single Electronic Data Interchange Area (SEDIA)



SEARCH FUNDING & TENDERS ▼

HOW TO PARTICIPATE ▼

PROJECTS & RESULTS

WORK AS AN EXPERT

SUPPORT ▼



• Legal Entity and Bank Account validations tasks will experience issues in the Grant Management Services on Monday 28 March 2022 between 20:00 and 21:30 CET.  
• The Identity, Bank Account, Contracts & Payments functionalities in the Experts Area of the F&T Portal will be unavailable Monday 28 March 2022 between 20:00 and 21:30 CET.

## Find calls for proposals and tenders

Search calls for proposals and tenders by keywords, programmes...

Search

## EU Programmes

Asylum, Migration and  
Integration Fund (AMIF)

Border Management and  
Visa Instrument (BMVI)

Customs Control  
Equipment Instrument  
(CCEI)

Connecting Europe  
Facility (CEF)

Citizens, Equality, Rights  
and Values Programme  
(CERV)

Creative Europe (CREA)

Step 2 Identify your future host institution and your supervisor, and get in contact with them (both the supervisor and the grants support office)

Step 3 Register your proposal through the call page, by using the Participant Identification Code (PIC ) of your future Host Institution

## General information

Topic description

Destination

Conditions and documents

Partner search announcements

Submission service

Topic related FAQ

Get support

Call updates

 Go back

Searches of partners to collaborate on this topic

40

[View / Edit](#)

LEARs, Account Administrators or self-registrants can publish partner requests for open and forthcoming topics after logging into this Portal, as well as any user having an active public Pe

## Start submission

The submission system is planned to be opened on the date stated on the topic header.

## Topic related FAQ



Search...



**Under Marie Skłodowska-Curie Postdoctoral Fellowships (MSCA-PF), can a researcher have multiple supervisors within the same host organisation?**

There must be only one supervisor per host organisation. The supervisor is the senior researcher appointed at the beneficiary to supervise the researcher throughout the whole durati

# Postdoctoral candidate - how to apply?

Step 4 Download the proposal Template (Part B), write your project proposal with the support of your supervisor and your Host Institution  
EU Grants Office

The screenshot shows the European Commission's 'Funding & tender opportunities' website. The header includes the European Commission logo and the text 'Single Electronic Data Interchange Area (SEDIA)'. A navigation bar contains links: 'SEARCH FUNDING & TENDERS', 'HOW TO PARTICIPATE', 'PROJECTS & RESULTS', 'WORK AS AN EXPERT', and 'SUPPORT'. Below the navigation bar, two main sections are highlighted: 'Part A (structured data)' and 'Part B (description of action)'. Part A is represented by a stack of forms with a 'new' badge, listing sections: 'General information', 'Participants & contacts', 'Budget', 'Ethics', and 'Call-specific questions'. Part B is represented by a document icon with the text '10 page limit' next to it.

Step 5 Fill in administrative forms online (Part A) with the support of your EU Grants Office, upload your proposal (Part B) in PDF, and submit it before the call deadline (13 September 2023)



# Proposal structure

ONLINE

## PART A – Administrative forms

- **General information**

*Acronyme, title, duration, scientific panel, « descriptors » and keywords, abstract, declarations*

- **Participants**

*Information concernant the beneficiary and the associated partners*

- **Budget**

*EU contribution calculated on the basis of personnes-months*

- **Ethics et Security**

*Ethics and security questionnaire, self-evaluation*

- **Other Questions**

PDF TO  
SUBMIT  
ONLINE

## PART B1 – Scientific project - 10 pages

- **Section 1 : Excellence**
- **Section 2 : Impact**
- **Section 3 : Implementation**

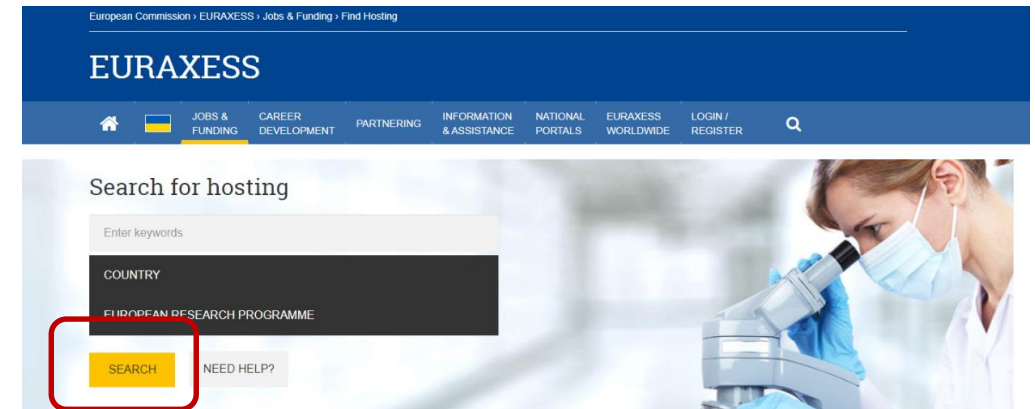
PDF TO  
SUBMIT  
ONLINE

## PART B2 - Annexes - No page limit

- **Section 4 - CV of the researcher** (5 pages max.)
- **Section 5 - Capacity of participating organisations**
- **Section 6 - Additional information concerning ethics**
- **Section 7- Additional information concerning security**
- **Section 8 – Letters of commitment (only for Global Fellowships)**

*Starting from 2023, only required from the outgoing phase host in Global Postdoctoral Fellowships.*

- ✓ Tip 1 : Activate your professional networks and existing collaborations
- ✓ Tip 2 : Check publications in your research area. Who is the specialist/the lab you would like to work with?
- ✓ Tip 3 : Search through Hosting offers on Euraxess Jobs portal : <https://euraxess.ec.europa.eu/jobs/hosting/search> or on [MSCA-NET match-making platform](#).



- ✓ Tip 4 : Check Partner Search Announcements on the Funding&Tenders Portal, on the [call page](#)
- ✓ Tip 5 : Interested by a fellowship in a private company? Check companies' profiles on the Enterprise Europe Network partner search platform : [https://een.ec.europa.eu/partners?f%5B0%5D=field\\_country%3A298](https://een.ec.europa.eu/partners?f%5B0%5D=field_country%3A298)

# I have identified a possible host – what now?

## Contact them

- Send a short e-mail explaining who you are, your motivations and why you want to work with them and why this institution
- Specify that you want to apply with them to the MSCA Postdoctoral Fellowships (include a link to the call page)
- Attach your CV and a short summary of your project (one-page-proposal)
- Make sure you are clear in what you are asking from them

## Make sure you are visible

- Make sure your research pages/web site are up-to-date
  - ✓ What you have done – current CV
  - ✓ Include all activities : demonstrate that you are the right candidate for a Postdoctoral Fellowship
  - ✓ Research interests – what you would like to work on in the future
- Social media – personal vs professional

## You are a Host Institution (university, research center ) ?

*Develop your existing scientific partnerships or create new ones through :*

- ✓Hosting a research fellow from Romania in a French lab (1-2 years)
- ✓Hosting a research fellow from France in a Romanian lab (1-2 years)

### *How to attract postdoctoral candidates ?*

- Activate your professional networks (e.g. in the frame of PHC)
- Ask the French Embassy in Romania for support
- If relevant, make use of short mobility to identify candidates and discuss with them their projects
- Register your Hosting offers on Euraxess :  
<https://euraxess.ec.europa.eu/jobs>
- Make sure your research pages/web sites are visible and up-to-date
- Get informed about support to applicants provided by your institution (EU Grants office) and your National Contact Point and inform your candidates of it
- Prepare the PF applications **with** your postdoctoral candidate(s)

Only one proposal may be submitted by postdoctoral candidate by call.  
Several proposals may be submitted by the same supervisor or Host Institution.



# French Research and Innovation landscape



# France's Research Landscape



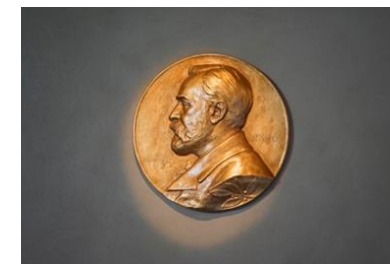
- ❖ 75 public Universities
- ❖ 150 Grandes Ecoles
- ❖ 26 public research organisations (CNRS, INSERM, CEA, INRA, INRIA, IFREMER, CNES, IRD, CIRAD etc.)
- ❖ 2 private foundations (Institut Pasteur and Institut Curie)
- ❖ 295 754 researchers among which 28% are women
- ❖ 1,6M students and 71 159 PhD students
- ❖ 71 competitiveness clusters
- ❖ 2,2% of GDP dedicated to research (49,5 billion €)

**France's population = 67,8 million**



# 7 good reasons to choose France for your research :

- ✓ **Excellent research** : France takes 2<sup>nd</sup> world place for the number of Fields medals (11) and 2<sup>nd</sup> world place for Nobel prizes (65). It is the 3<sup>rd</sup> nation in Shanghai ranking (2021) and it takes the 4<sup>th</sup> world place for the impact of its scientific publications (H-index)
- ✓ **A country of innovation** : France is the 2<sup>nd</sup> EU country for the number of patents
- ✓ **Attracting researchers from all over the world** : with 42% of foreigners among its PhD students, France is the 3<sup>rd</sup> host country in EU for young researchers
- ✓ **A global network** : French R&I institutions are set in more than 250 destinations in the world, and more than 63% of French publications are made in collaboration with foreign researchers
- ✓ **At the heart of international research projects** : French research is involved in large european and international research projects : particle physics with CERN, Arianespace, ITER project on nuclear fusion etc.
- ✓ **Dynamic R&I ecosystem** : 2/3 of French research is operated by the non-academic sector. 600 000 people work for R&I in enterprises.
- ✓ **Top level research infrastructures** : 108 RI, including large research infrastructures are listed in the national roadmap 2021, in different areas : astronomy and astrophysics, health and life sciences, human and social sciences, physics and engineering sciences etc.







# Organisation of Research and Innovation in France

Academic sector



Non-academic sector



National research  
centers

Universities

Grandes Ecoles

Large  
enterprises

SMEs

NGOs

Hospitals

Public  
Agencies

Museums

Etc.

UMR

UPR

UMR

UMR

UMR

UMR

UMR

Research Units - Laboratories

# ScanR: Search Engine for French Research and Innovation

<https://scanr.enseignementsup-recherche.gouv.fr/>

Search by  
keywords,  
publications,  
authors' names,  
projects' names,  
types of entity,  
sectors, location  
etc.



About Search Focus

Share FR | EN



MINISTÈRE  
DE L'ENSEIGNEMENT  
SUPÉRIEUR  
ET DE LA RECHERCHE

*Liberté  
Égalité  
Fraternité*

## Explore the world of French Research and innovation with scanR

Ex: "Open science", "UMR 7534", "Projet ORIGAMI", "Catherine MARTIN" ...



Try our search proposals

Climate change

Virtual reality

Digital humanities

International migrations



The data that scanR links  
together



42,825 public and private  
entities



569,829 author records



113,790 funding



3,055,573 productions  
(publications, thesis and  
patents)





# Romanian Research and Innovation landscape



# Romania's Research Landscape



**Location:** in Southeastern Europe, it borders the Black Sea, Bulgaria, Ukraine, Hungary, Serbia and Moldova

**Area:** 238.391 square kilometers

**Inhabitants:** over 19 million inhabitants, the country is the **seventh most populous** member state of the **European Union**

**Currency:** leu (1 euro = 5 lei)

**Official language:** Romanian

**NATO member state:** since 29<sup>th</sup> of March 2004

**UE member state:** since 1<sup>st</sup> of January 2007

# Research and education landscape

## MINISTRY OF EDUCATION

**53** public universities (including military universities)

**32** private universities

**535.030** students (**70,15%** Bachelor's Degrees; **26,92%** Master's Degree; **2,65%** PhD)

## MINISTRY OF RESEARCH, INNOVATION AND DIGITALIZATION

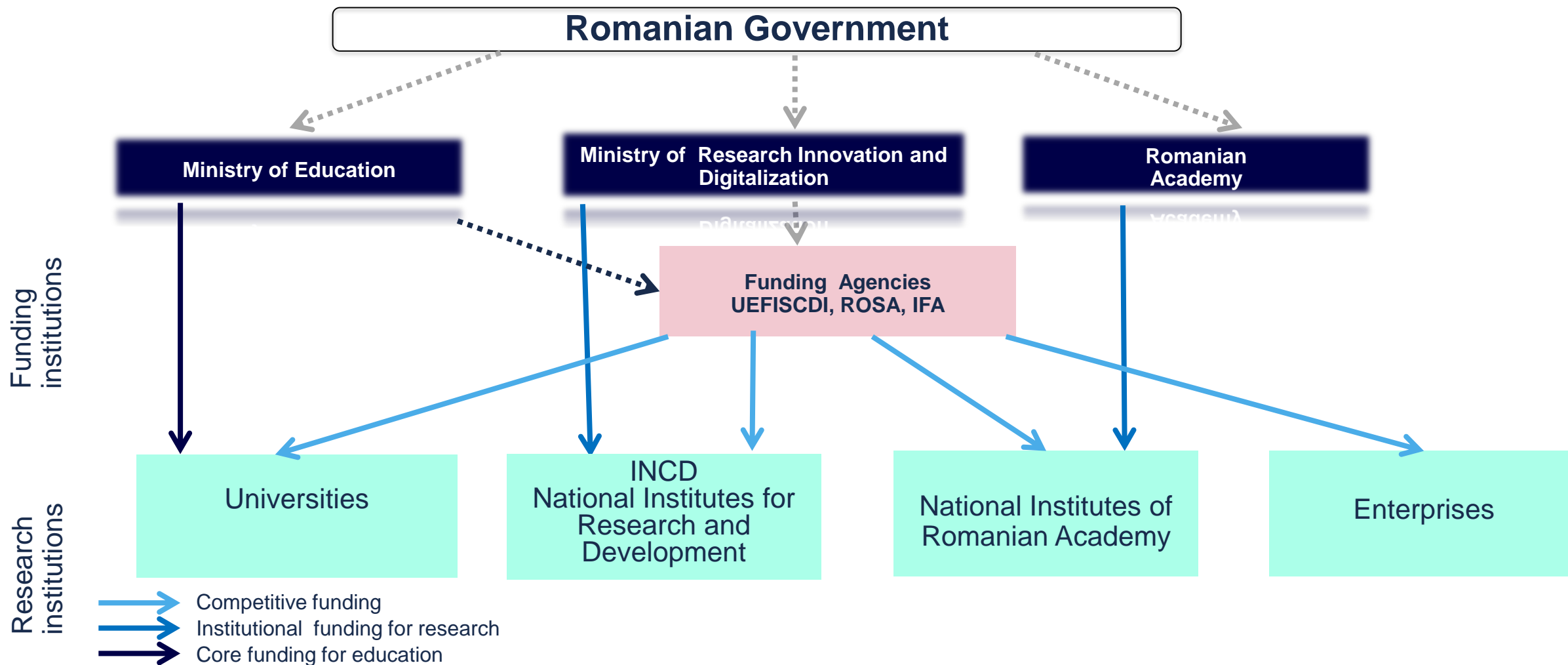
**47** National Research and Development Institutes

## ROMANIAN ACADEMY

**60** Research Institutes

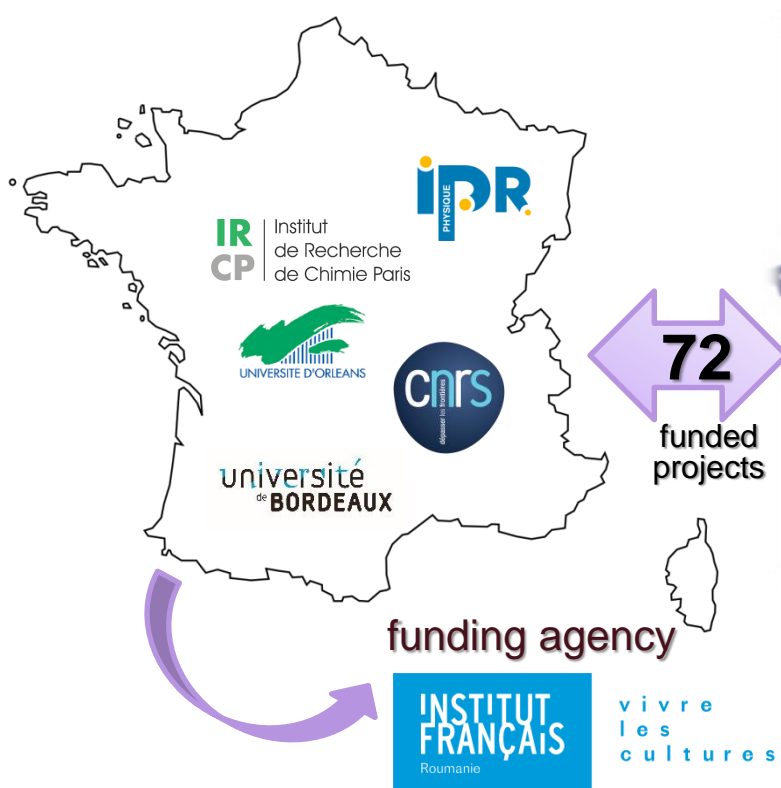


# Organisation of Research and Innovation in Romania



## Research visits & mobility projects

### RO – FR Brâncuși



funding agency  
*uefiscdi*  
Executive Agency for Higher  
Education, Research, Development  
and Innovation Funding

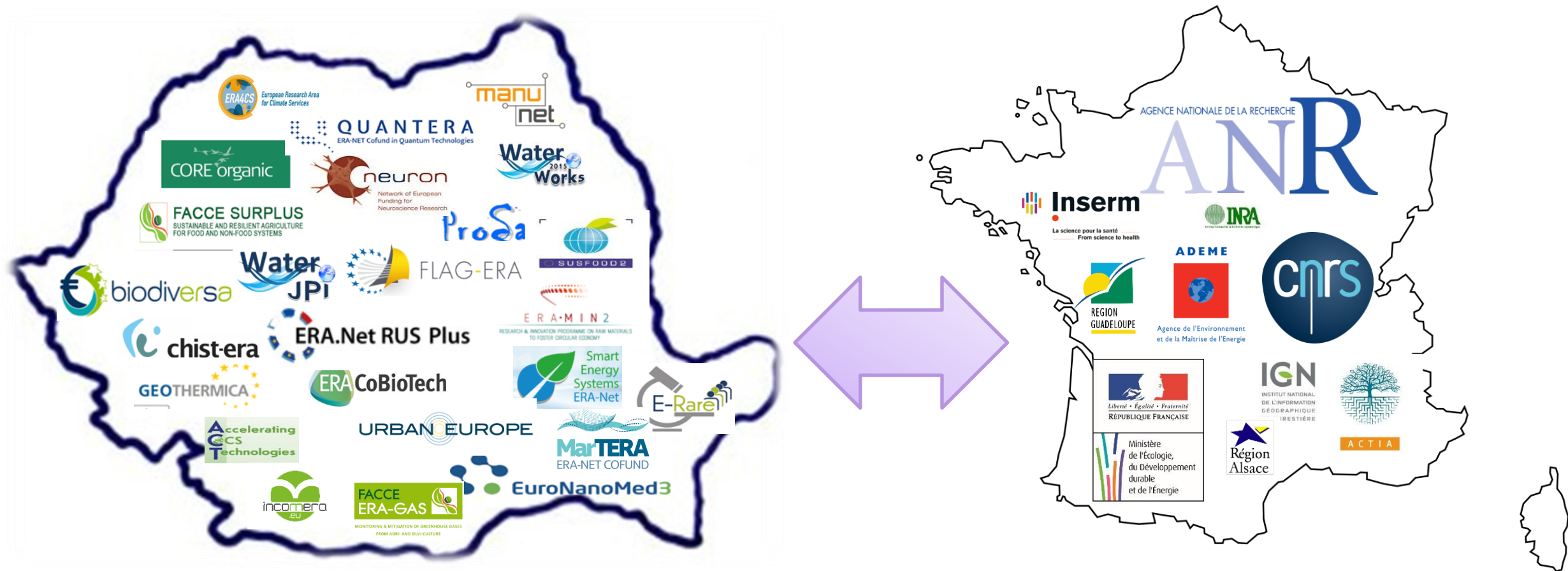
### RO – FR CNRS



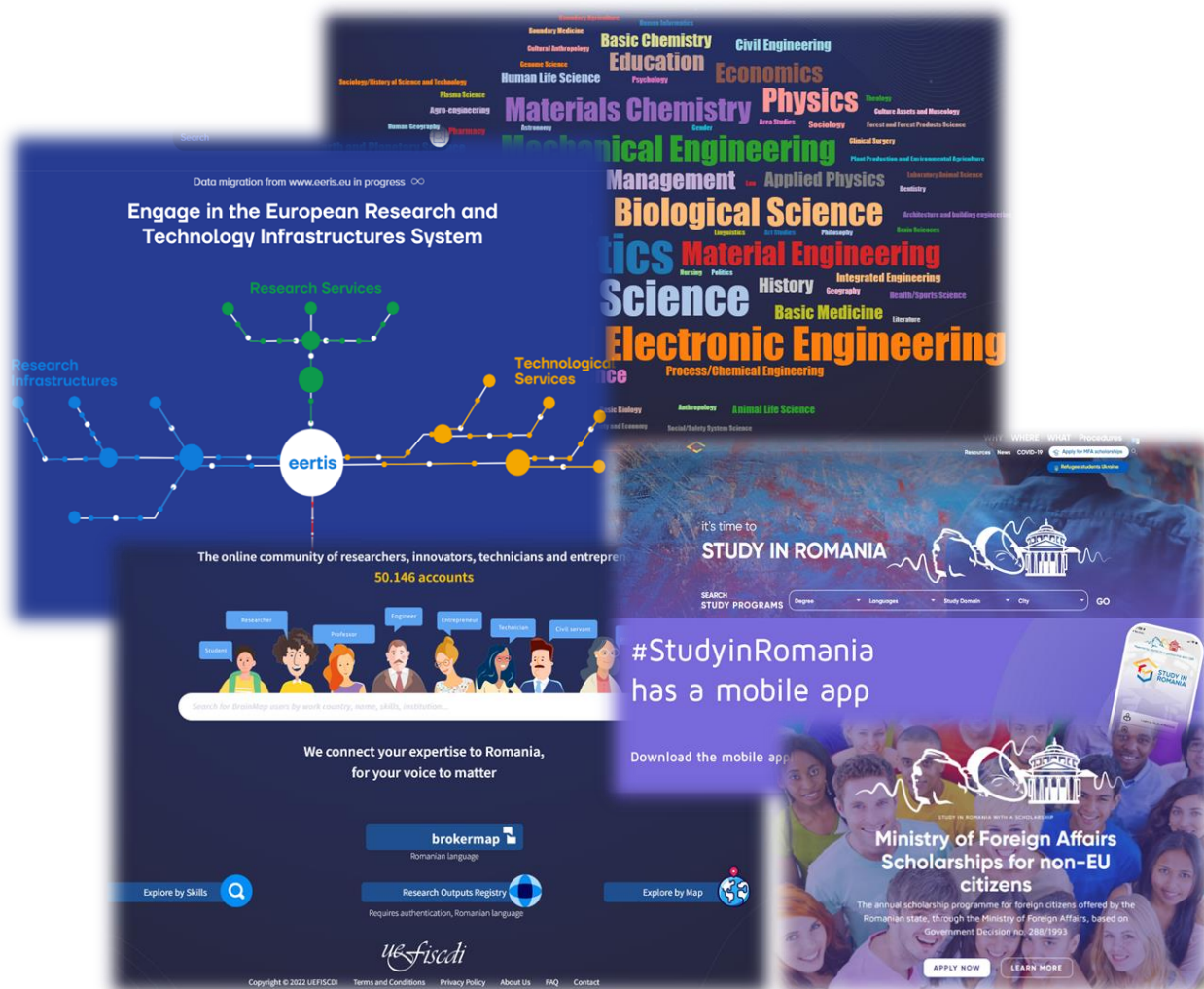


# ERA-NET collaboration

UEFISCDI partner with institutions from France  
in more than 50 ERA-NET projects – Horizon 2020 & Europe



# UEFISCDI trademarks platforms



## RESEARCH & INNOVATION

[uefiscdi-direct.ro](https://uefiscdi-direct.ro)

[brainmap.ro](https://brainmap.ro)

[eertis.eu](https://eertis.eu)

## HIGHER EDUCATION

[rei.gov.ro](https://rei.gov.ro)

[studyinromania.gov.ro](https://studyinromania.gov.ro)

[scholarships.studyinromania.gov.ro](https://scholarships.studyinromania.gov.ro)

# MSCA-NET profiles from Romania

MSCA matchmaking platform

Home Fellows Supervisors Institutions Companies NCPs EEN advisors All Participants Marketplace Events Meetings Conversations

## Institutions

Relevance

18 Organisations found

Search

☐ PARTICIPATION TYPES

☒ COUNTRIES

- ☒ Romania (18)
- ☐ Spain (34)
- ☐ Turkey (36)
- ☐ Portugal (23)
- ☐ Ireland (14)

Show more (53)

☐ AREAS OF ACTIVITIES

☐ ORGANISATION TYPES

Astronomical Institute of the Romanian Acad...  
Research Centre  
Bucuresti, Romania

Physics Mathematics Physics (PHY) Global Fellowship +12

Babes-Bolyai University  
University  
Cluj-Napoca, Cluj, Romania

S7 Education M2-Applied Mathematics

Gheorghe Asachi University  
University  
Iasi, Romania

Chemistry Chemistry (CHE) Global Fellowship

Horia Hulubei Nat  
Research Centre  
Magurele, Romania

HOST INSTITUTIONS IN  
ACADEMIC SECTOR

20 profiles

MSCA matchmaking platform

Home Fellows Supervisors Institutions Companies NCPs EEN advisors All Participants Marketplace Events Meetings Conversations

## Supervisors

Relevance

31 Participants found

Search

☐ BOOKMARKED

☐ MATCHMAKING

☐ ORGANIZATION TYPES

☐ AREAS OF ACTIVITIES

☒ COUNTRIES

- ☒ Romania (31)
- ☐ Spain (32)
- ☐ Ireland (35)
- ☐ United Kingdom (31)
- ☐ Italy (27)

Show more (42)

☐ I AM OFFERING

Viorel Paleu  
Professor (Full)  
IASI, ROMANIA  
Gheorghe Asachi Technical University of Iasi,  
Romania

Request meeting

Emanuel Tundrea  
Associate Professor  
ORADEA, ROMANIA  
Emanuel University of Oradea

Request meeting

Alin Marius Andries  
Professor of banking and finance  
IASI, ROMANIA  
Alexandru Ioan Cuza University of Iasi

Request meeting

Maria-Corina Serban  
Medical University Iasi ROMANIA  
TIMISOARA, ROMANIA  
Victor Babes University of Medicine and  
Pharmacy Timisoara, Romania, Eftimie Murgu  
Sq. no. 2, 300041 Timisoara, RO

Request meeting

Florea Mihaela  
MAGURELE, ROMANIA  
National Institute of Materials Physics

Request meeting

HOST INSTITUTIONS –  
COMPANIES

2 profiles

SUPERVISORS

38 profiles

# MSCA-NET profiles from France

## Institutions

5 Organisations found

france

☐ PARTICIPATION TYPES

☒ COUNTRIES

☒ France (5)

☐ Romania (1)

☐ AREAS OF ACTIVITIES

☐ ORGANISATION TYPES

**C**

**CNRS**  
Research Centre  
Nantes, France

Physics (PHY) Chemistry (CHE) Glo

**G**


**GENOPOLE**  
Other  
Paris, France


15 Participants found


Search

☐ ORGANIZATION TYPES

☐ AREAS OF ACTIVITIES

 **Zaineb Chelly Dagdia**  
Associate Professor  
VERSAILLES, FRANCE  
UVSQ, Paris Saclay >

 **Mathieu Derbré**  
ANGERS, FRANCE  
University of Angers >

 **Jerome Wenger**  
CNRS research director  
MARSEILLE, FRANCE  
CNRS Institut Fresnel >

**HOST INSTITUTIONS IN  
ACADEMIC SECTOR**

5 profiles

**HOST INSTITUTIONS –  
COMPANIES**

1 profile

**SUPERVISORS**

15 profiles


## Companies

1 Organisation found

france

☒ COUNTRIES

☒ France (1)

 **City Cité Ciudad**  
Company (SME, Spin-off, Start-up)  
Orléans, France

S7-Education Staff Exchange Proposal +3

- **Your Host Institution.** Most host institutions have dedicated support both on proposal preparation stage (coaching sessions, proofreading, proposal writing assistance etc) and on project implementation stage (reporting, feedback and assistance with project implementation, training, communication, practical aspects).
  - As soon as possible, contact the **EU Grants Office** of your future Host Institution
- **The NCP.** National Contact Point provide advice and resources to proposers and supervisors (guidelines, coaching sessions etc.).
  - If you have questions on the programme rules or need advice on proposal writing, you can send your questions by e-mail or ask an individual online interview with the NCP
- **MSCA page** on the French national platform dedicated to Horizon Europe : <https://www.horizon-europe.gouv.fr/amsc>
  - Find information, resources and register for the next events organised by the NCP
- **Euraxess Romania** : <https://www.euraxess.gov.ro/>
- **Euraxess France** <https://www.euraxess.fr/information/centres/search/country/france-1104>
  - Information on visa, accommodation, health insurance and other practical aspects on life in the country



# Romanian MSCA NCP Team



Sabina OLARU

NCP Unit @ UEFISCDI in Romania:

[www.ncp.uefiscdi.ro](http://www.ncp.uefiscdi.ro)

Contact NCP:

[ncp@uefiscdi.ro](mailto:ncp@uefiscdi.ro)

[sabina.olaru@uefiscdi.ro](mailto:sabina.olaru@uefiscdi.ro)

[adriana.rotar@uefiscdi.ro](mailto:adriana.rotar@uefiscdi.ro)



Adriana ROTAR

*uefiscdi*

# French MSCA NCP Team



Eugenia SHADLOVA



Morgane BUREAU

French portal dedicated to Horizon Europe :  
[www.horizon-europe.gouv.fr](http://www.horizon-europe.gouv.fr)

Contact NCP :  
[pcn-mariescurie@recherche.gouv.fr](mailto:pcn-mariescurie@recherche.gouv.fr)



Chloé RICHARD



Our LinkedIn page: <https://www.linkedin.com/company/pcn-amsc-fr/>