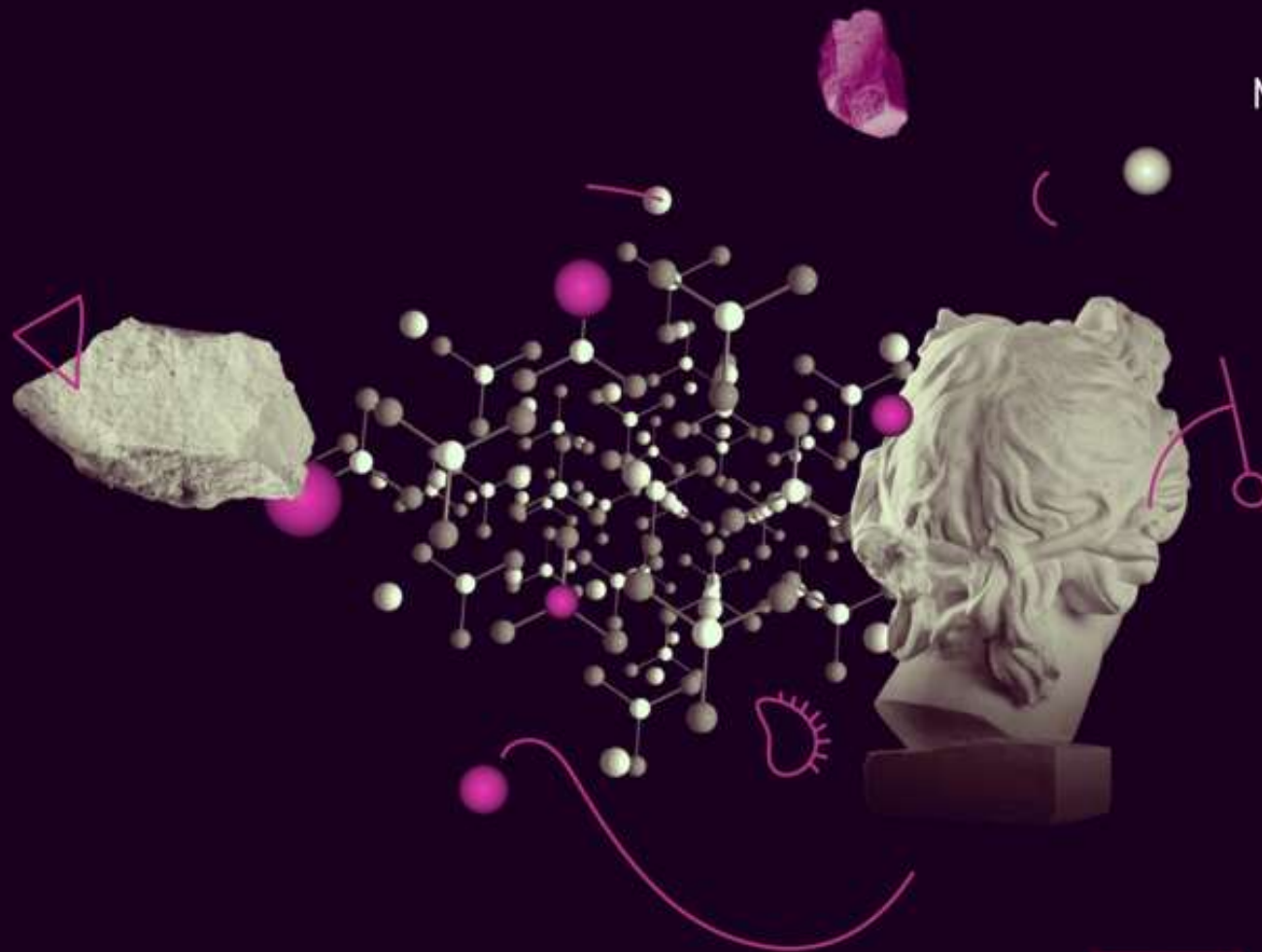




**MSCA**

Marie Skłodowska-Curie Actions

*Developing talents, advancing research*



# Staff Exchanges

**MSCA Staff Exchanges 2022 : Focus Entreprises - Matinée d'information - 25 Octobre 2022**

**Brito FERREIRA**

**European Research Executive Agency**

Marie Skłodowska-Curie Actions



@REA\_research, @MSCActions

# The Actions

## The MSCA have **5** main actions

### Doctoral Networks

**implement doctoral programmes** (including joint doctorates and industrial doctorates) **by international partnerships** of organisations from different sectors. They train highly-skilled doctoral candidates, stimulate their creativity, enhance their innovation capacities and boost their employability in the long-term.

### Postdoctoral Fellowships

**support researchers' careers and foster excellence in research and innovation.**

Researchers holding a PhD can carry out their research activities, acquire new skills and develop their careers abroad, whilst developing competences in non-academic sectors and working within interdisciplinary teams.

### Staff Exchanges

**encourage short-term international and inter-sectoral exchanges of research and innovation staff** through sustainable, collaborative projects in Europe and beyond. By doing so, they enhance knowledge and skills transfer and increase organisations' research and innovation capacities.

### MSCA and Citizens

**brings research and researchers closer to children, families and the public at large** through the European Researchers' Night - the annual research communication and promotion event taking place at the end of September across EU Member States and Horizon Europe Associated Countries.

### COFUND

**co-finances regional, national and international doctoral and postdoctoral programmes for researchers' training and career development.** The COFUND action spreads MSCA's best practices by setting high standards and excellent working conditions, and boosts training and international, interdisciplinary and inter-sectoral mobility.

# Objectives



International, inter-sectoral and interdisciplinary mobility of R&I staff (“secondments”)

Knowledge transfer between participating organisations

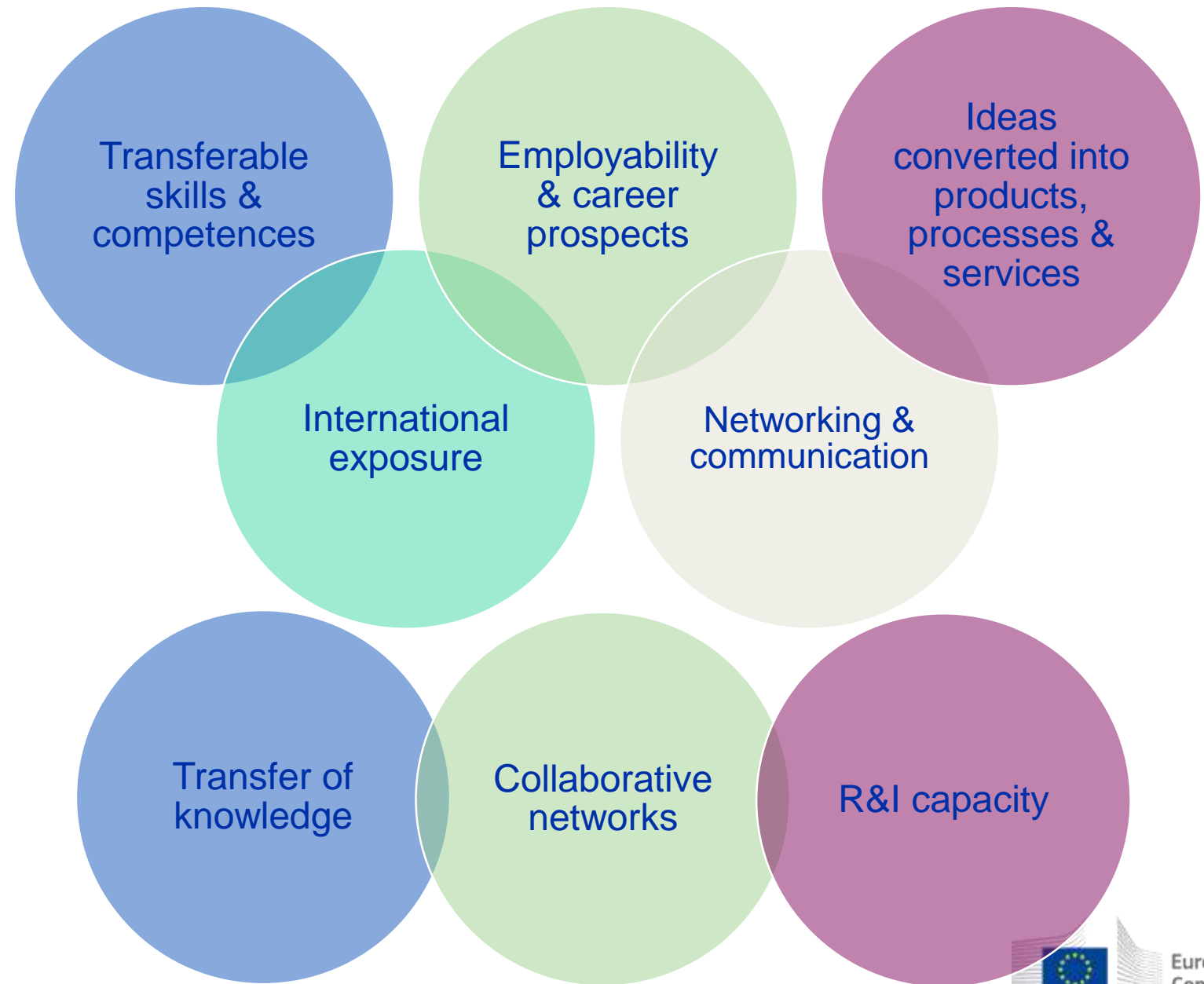
Collaboration between the academic and non-academic sectors (including SMEs)

Cooperation across the globe

# Added value

**Staff members**

**Organisations**



# Eligible participants

## Academic sector



Consortium of min. **3 legal entities in 3 different countries**, 2 of which in a different EU Member State or HE Associated Country



## Non-academic sector

If organisations from the **same sector**, there must be at least 1 organisation from a non-associated Third Country\*

\* Secondments within EU MS or HE AC must be between different sectors (between academic and non-academic), except for interdisciplinary secondments, which must be limited to a maximum of 1/3 of the total implemented months.



# Eligible staff



Any type of staff involved in R&I activities (researchers, administrative staff, managerial staff, technical staff)

Each staff member is seconded for a period of **1 to 12 months** (may be split into several stays)

## Seconded staff members

Researchers at any career stage (from doctoral candidates to postdoctoral researchers)

Staff needs to be devoted **full-time** to the action during the secondment



Actively engaged in research and/or innovation activities for at least **1 month** prior at the sending institution

After the secondment, staff should **return to their sending institution**

# Eligible exchanges

		"HOSTING" (receiving seconded staff members)			
		Academic organisation in MS/AC (1)	Non-academic organisation in MS/AC (2)	Associated Partners eligible for funding	Associated Partners non-eligible for funding
"SENDING" (sending staff members from organization)	Academic organisation in MS/AC (1)	1/3	✓	✓	✓
	Non-academic organisation in MS/AC (2)	✓	1/3	✓	✓
	Associated Partners* eligible for funding	✓	✓	✗	✗
	Associated Partners non-eligible for funding	✗	✗	✗	✗

**1/3** This symbol refers to same sector secondments up to 1/3 of the total implemented secondments funded by the EU as long as they are demonstrated to be interdisciplinary.

\* Associated Partners eligible for funding (see List of Participating Countries in Horizon Europe)

# Same-sector secondments in Europe (MS/AC)



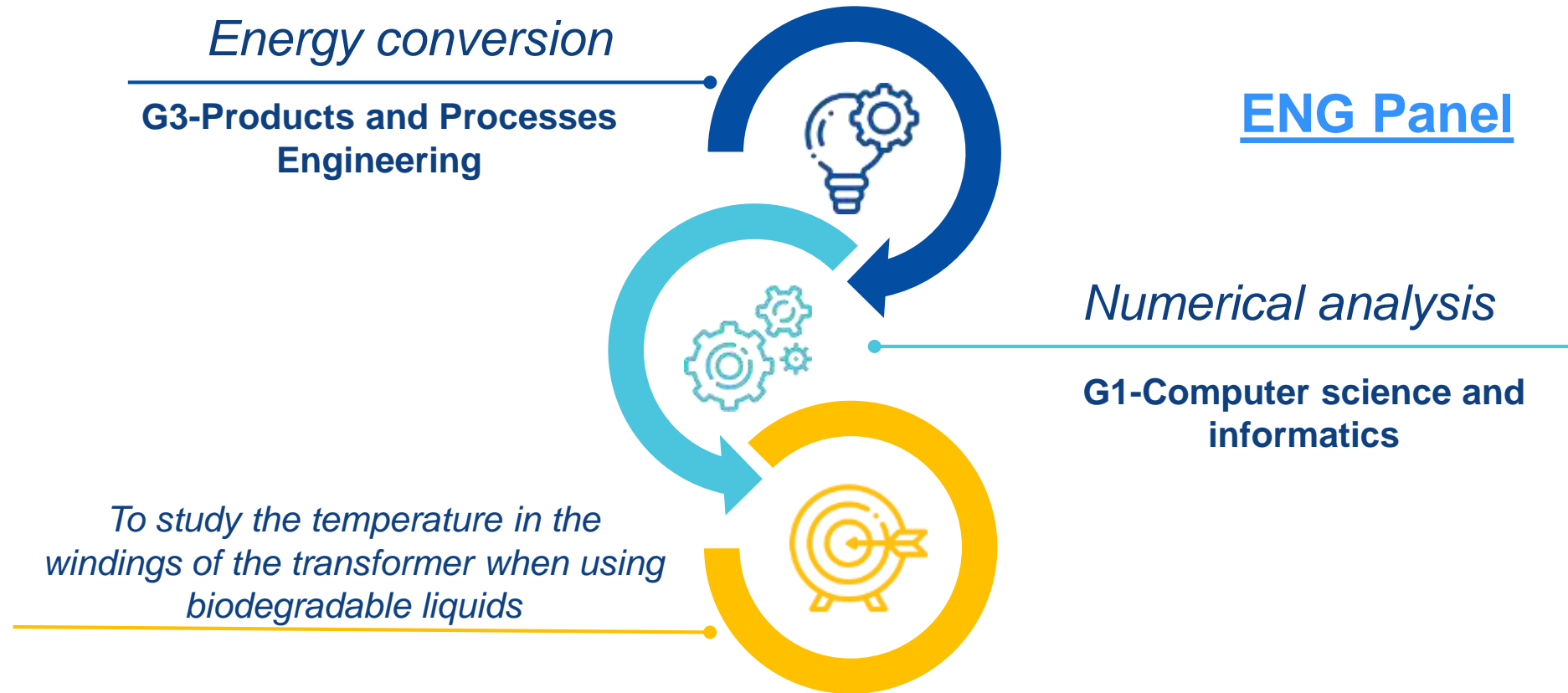
$\leq 1/3$  of the total secondments funded by the EU, if considered **Interdisciplinary**

Interdisciplinary secondments integrate aspects from **two or more different scientific disciplines**.

Important: **scientific panels + descriptors/first level MSCA keywords** from proposal form part A (see [REA Website](#))



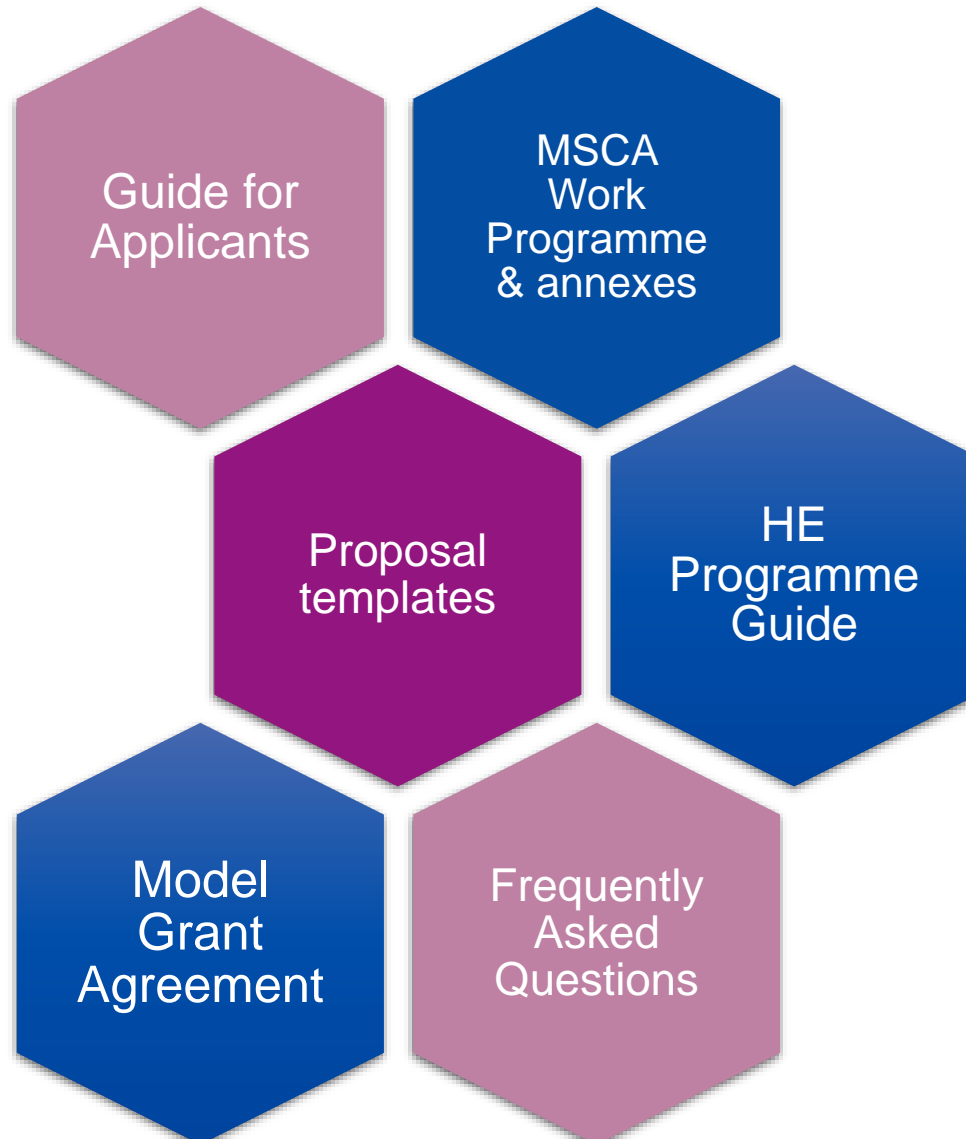
# Interdisciplinary mobility explained



# What does Staff Exchanges fund?



# Reference Documents



# Tips and tricks

## **Closely follow the call requirements**

Be in line with the action's objectives and expected outcomes

## **Follow available guidelines**

Use the structure provided in the template and address all the evaluation criteria

## **Highlight the EU dimension**

Show that your proposal addresses EU policy priorities and/or societal challenges

## **Get a second opinion**

Have your proposal proof-read by a colleague and pre-screened by your NCP

## **Sustainability of collaboration**

Describe the benefits of cooperation and how they can go beyond this project

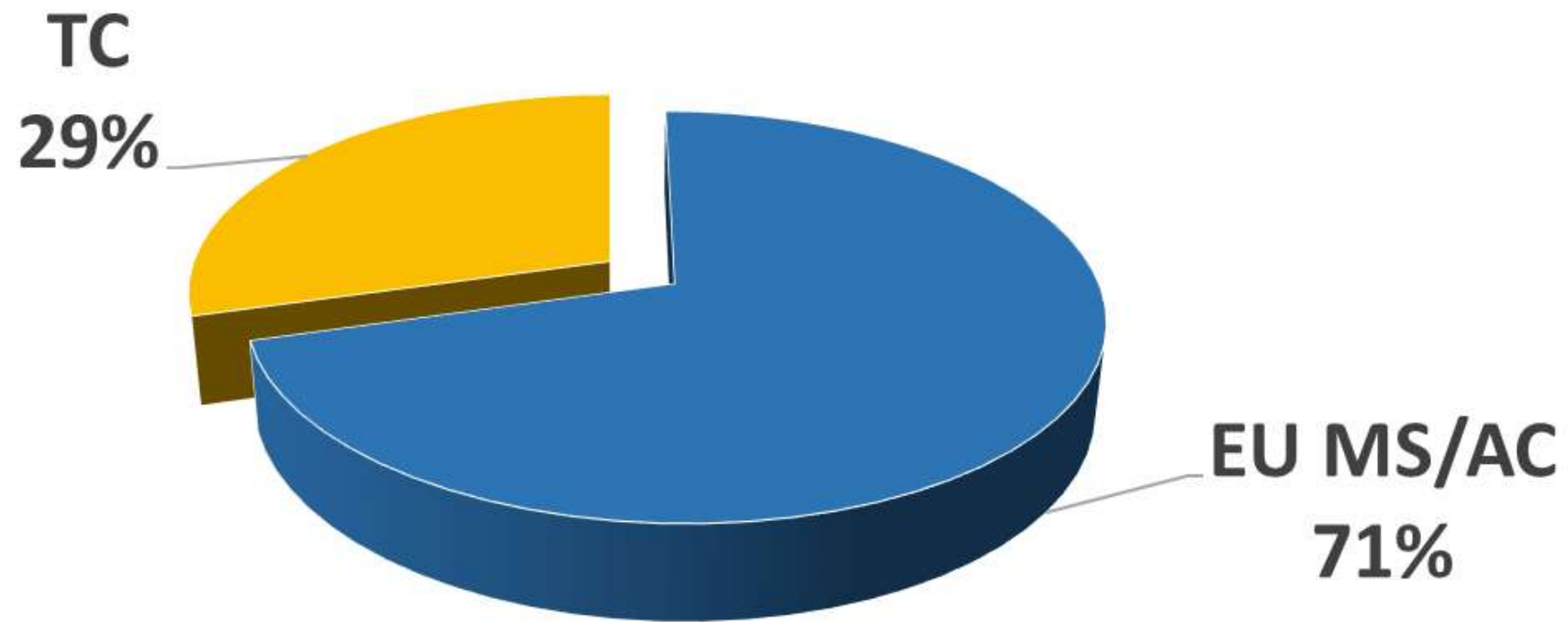
## **Contact your National Contact Point (NCP)**



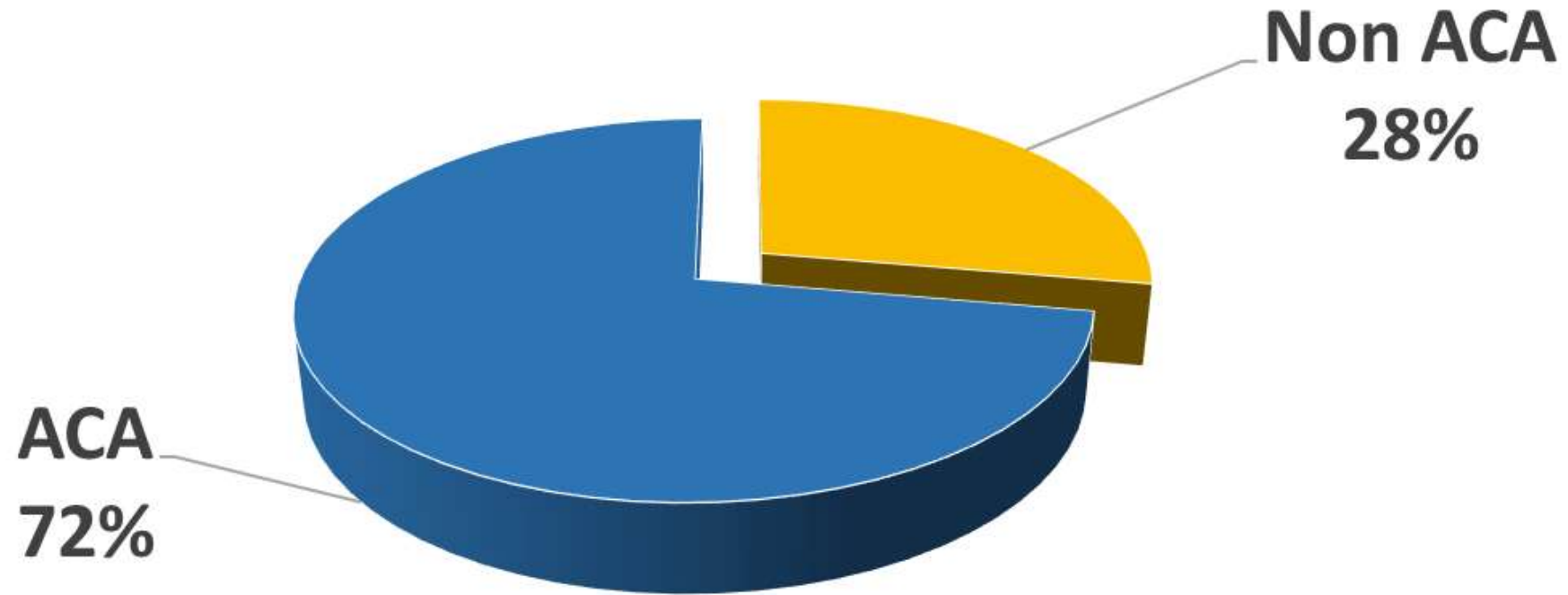
# Focus on the non academic sector



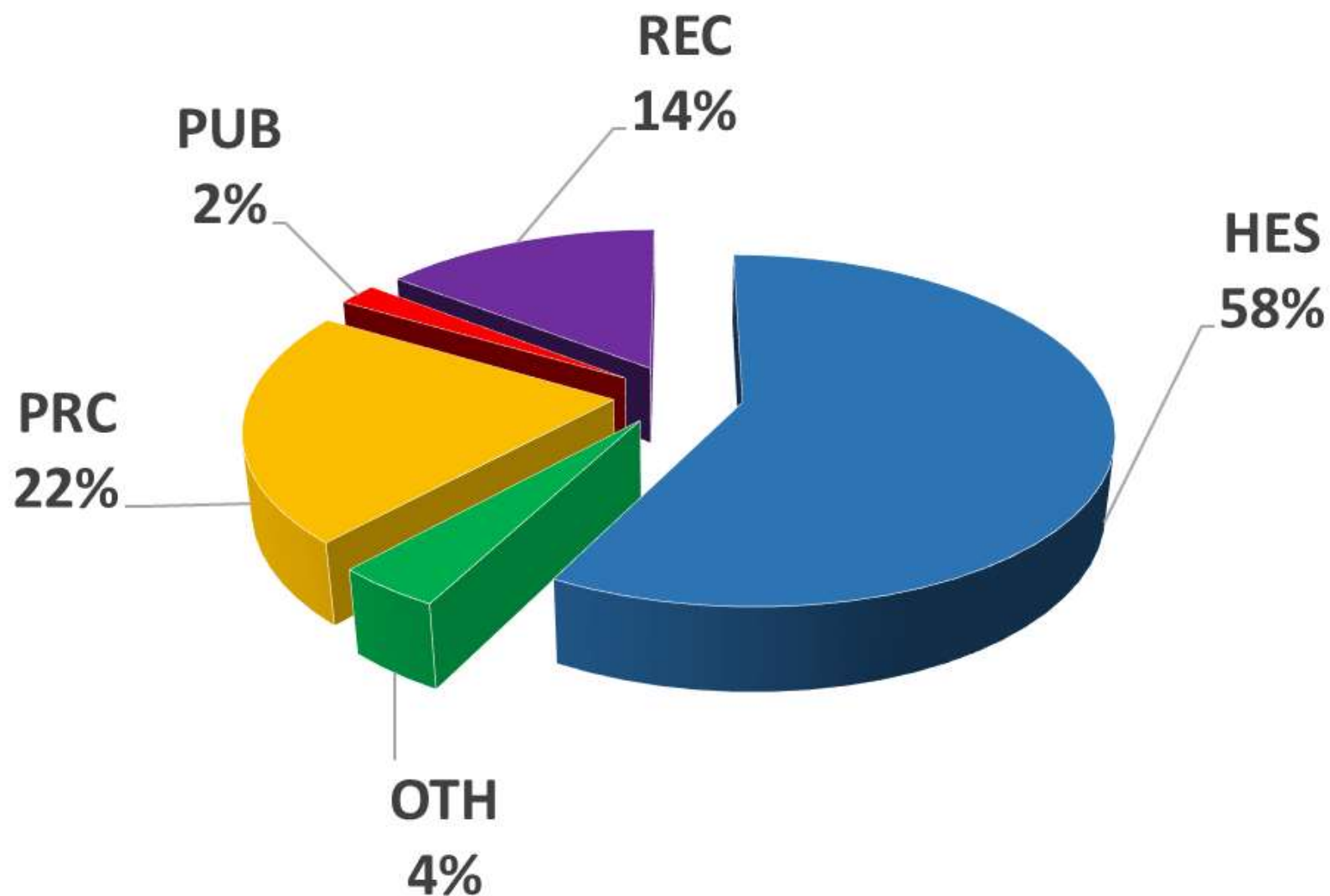
# International dimension



# Sectorial dimension



# Participant breakdown



# Points of interest for Non ACA



First step in EU funding



High success rate



Simplified participation



EC tool on innovation support, market readability, business ready

# Points of interest for Non ACA



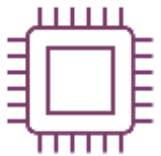
International collaboration



Networking/crossing disciplines/multidisciplinary



Increased innovation



Better scientific and technological capabilities



# Points of interest for Non ACA



Transfer of knowledge



Career development



Prospect for recruitment of staff



Experience with new work culture

# Five Missions Areas



**Adaptation to  
climate change,  
including societal  
transformation**



**Cancer**



**Healthy oceans,  
seas, coastal &  
inland waters**



**Climate-neutral  
& smart cities**



**Soil health &  
food**

# Next MSCA SE call

Call	2022	
	Opening Closing	Budget (M€)
Staff Exchanges	06/10/2022 08/03/2023	77,5



**+ 7% more  
budget vs 2021**



#StaffExchangesDay  
@REA\_research  
@MSCAactions

# Questions and answers



# Merci!

