

DRIVING URBAN TRANSITIONS TOWARDS A SUSTAINABLE FUTURE



MISSION AND VISION STATEMENT

The Driving Urban Transitions towards a Sustainable Future (DUT) partnership steps up the game to tackle urban challenges. We enable local authorities and municipalities, business and citizens to translate global strategies into local actions. We develop the skills and tools to make urban change happen and boost urgently needed urban transformations.

DUT addresses the urban dimension across all SDGs with SDG 11 (sustainable cities and communities) and its subgoals as the main entry point. More information can be found in JPI Urban Europe (2019:12) Strategic Research and Innovation Agenda 2.0*.

* <https://jpi-urbaneurope.eu/wp-content/uploads/2019/02/SRIA2.0.pdf>

KEY FACTS AND FIGURES

Horizon Europe Pillar and Cluster: Pillar II – Climate, energy and mobility

Type of partnership: Co-funded

Coordinating entities: Austrian Ministry for Climate Action / Austrian Research Promotion Agency

Total estimated budget: EUR 435 m

EU commitments: EUR 130 m

Partners' commitments: EUR 305 m

Predecessor under Horizon 2020: Joint Programming Initiative Urban Europe

FIND OUT MORE

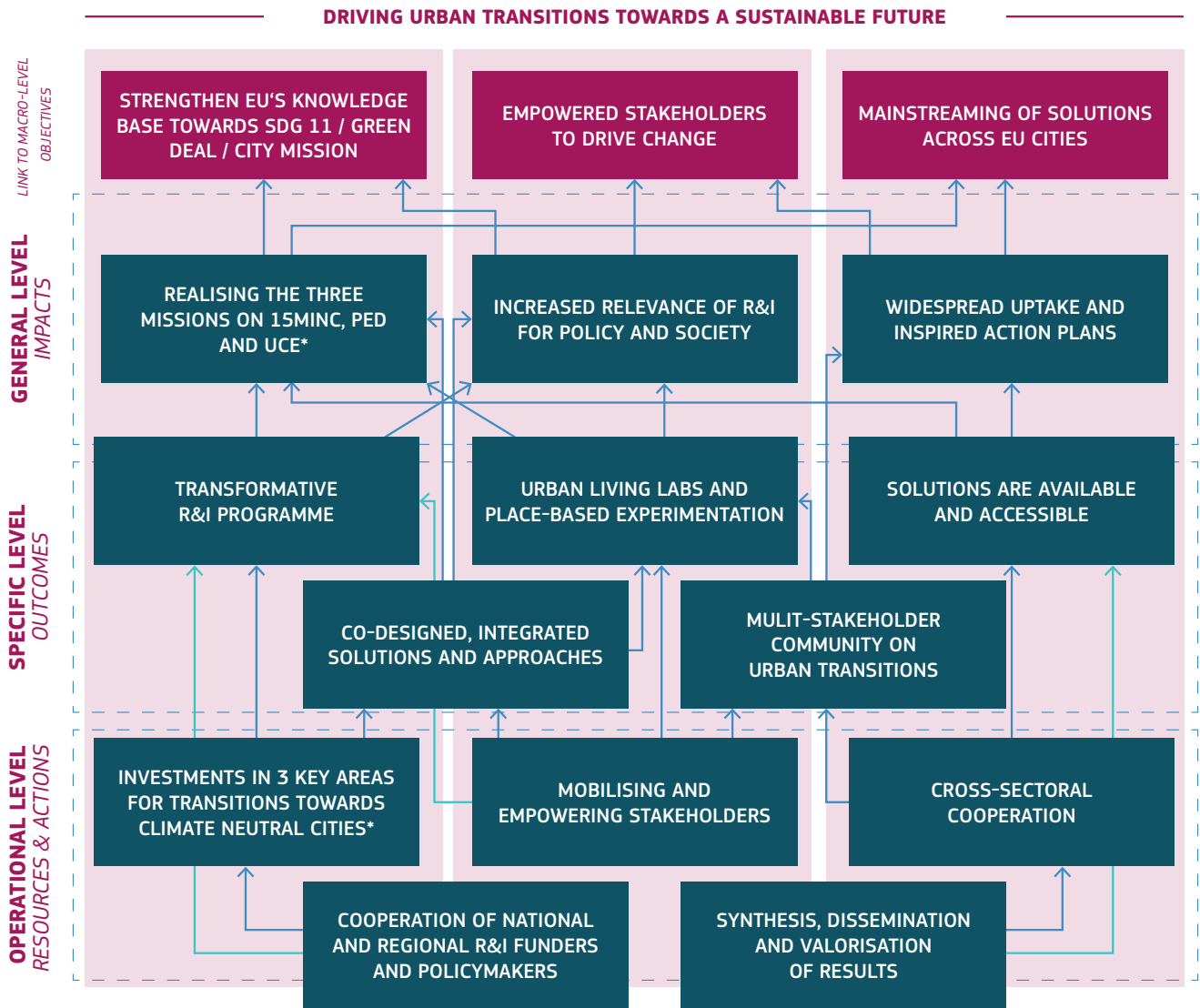
www.jpi-urbaneurope.eu

 @JPIUrbanEurope

 info@jpi-urbaneurope.eu



PARTNERSHIP SPECIFIC IMPACT PATHWAY (PSIP)



* 15 Minute Cities, Positive Energy Districts and Urban Circular Economies



PARTNERSHIP'S Key Performance Indicators

| KPI NAME | UNIT OF MEASUREMENT | BASELINE | TARGET 2023 | TARGET 2025 | TARGET 2027 | AMBITION >2027 |
|--|---|---|--|-----------------|-------------|---|
| RESOURCES (INPUT), PROCESSES AND ACTIVITIES | | | | | | |
| Country engagement | # countries # national/regional partners | 60 partners 27 countries | | | | Keep / mobilise new (international) countries |
| Transdisciplinary projects | # project # and type of beneficiaries | 110 571 | 50 | 150 | 300 | 400 2 800 (min. 50% non-research organisations). |
| Establishment of new urban living labs | # of urban living labs | 150+ | 70 | 200 | 350 | 500 ULLs (min. 10 per participating country) |
| Stakeholder mobilisation formats | # and type (incl. AGORA events) | 18 community building measures | | | | 23 community building measures |
| Evidence-based policy-making and mainstreaming | # activities and type | 18 ULTs (2018-2021), 50 policy recommendations (2015-2020) 4 newsletters/year | 10 ULTs | 20 ULTs | 30 ULTs | 35 ULTs 200 policy recommendations (2022-2032) |
| OUTCOMES | | | | | | |
| Average budget for joint calls | Euro per ERA-NET (annual call) | 25 Mio EUR allocated 18 Mio EUR contracted | Ambition >2027: EUR 50 m allocated EUR 45 m contracted | | | |
| Stakeholder mobilisation | # and geographical spread | approx. 500 | 700 | 1 500 | 2 500 | 3 000 (incl. stakeholder balance) |
| Joint activities with other EPs | # and type | JPI Urban Europe joint activities | Min. 3 joint activities per year | | | |
| Interactions with wider community | # newsletter subscribers # followers | 5 000 2 000 | | Increase by 30% | | Double by 2032 |
| IMPACTS | | | | | | |
| DUT transition pathways | # and type of activities and achievements | PED programme portfolio | Continuous and balanced portfolio of activities and achievements in each of the TPs | | | |
| Multi-stakeholder community | Share of stakeholders | 65% research 21% local public authorities 10% businesses 4% civil society actors | 40% research 30% local public authorities, 20% businesses 10% civil society actors | | | |
| SDGs / Green Deal contribution | % of projects and activities | Example ERA-NET Smart Urban Futures | All funded projects contribute towards the SDGs and the Green Deal; 80% of events are related to Green Deal priorities | | | |

The baseline refers to the achievements of JPI Urban Europe and is based on the established monitoring framework and its indicators. Therefore indicators relating to specific European Commission policies such as the Green Deal are not covered yet and the given baselines must be considered as estimates. More details on the achievements of JPI Urban Europe can be found at the JPI Urban Europe dashboard, <https://jpi-urbaneurope.eu/explore/>

ULTs refers to Urban Lunch Talks, a webinar series introduced in 2018 to support dissemination and community building.



SYNERGIES WITH OTHER EUROPEAN AND NATIONAL INITIATIVES

SYNERGIES WITH EUROPEAN AND INTERNATIONAL POLICY AGENDAS

JPI Urban Europe (JPI UE) is aligning its strategic research and innovation agenda with relevant European and international policy agendas, to join consultation processes around these agendas and to provide evidence from research and innovation activities towards the implementation of the agendas. For instance, JPI UE is a permanent observer to the Urban Agenda of EU (UAEU) and contributed to the development process of the New Leipzig Charter. Exchanges with the UAEU partnerships allowed to consider the defined policy needs in the JPI UE priority setting. The recent ENSUF synthesis report includes a mapping of concrete outputs from projects towards UN's 2030 SDGs, <https://jpi-urbaneurope.eu/wp-content/uploads/2021/09/ENSUF-Synthesis-Report-AIT-FINAL-211103.pdf>.

SYNERGIES WITH OTHER EUROPEAN INITIATIVES AND PARTNERSHIPS

Focusing on the complexity of urban transformation, JPI Urban Europe (and DUT) offer manifold entry points for cooperation with sectoral oriented initiatives and partnerships. Over the last years co-operation with the nine other joint programming initiatives has taken place to regularly develop common positions and organise joint events, e.g. JPI Urban Europe organised, in cooperation with all JPIs, the conference 10 years Joint Programming in 2018. Joint workshops with FACCE, Water JPI or JPI Climate allowed the identifying of common issues and the alignment of agendas. Dialogues were established with CETP, Biodiversa, EIT Urban Mobility or Food Systems to exchange on strategic issues and priorities.

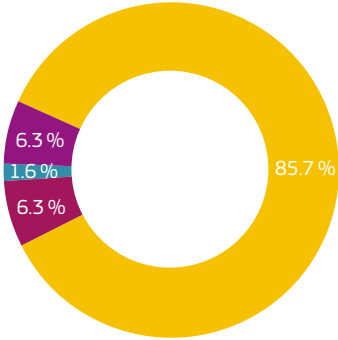
SYNERGIES WITH STAKEHOLDER COMMUNITIES

Co-design is one of the key principles of JPI Urban Europe. Various formats have been established to mobilise and engage stakeholders in agenda setting and knowledge production. For instance, a bottom-up multi-stakeholder community was initiated and is further developed: interactive AGORA dialogues were organised mobilising more than 500 stakeholders in 8 events; the webinar series Urban Lunch Talks offers space for reflexions and has attracted 1 400 participants from 45 countries since 2018. To fully exploit the synergies across stakeholder groups, urban living labs are strongly supported as they allow urban stakeholders to engage in local experimentation and the co-creation of solutions in projects. So far more than 150 urban living labs have been funded.



OVERVIEW OF MEMBERS

MEMBERS PER TYPE



- RESEARCH** Public research organisation (including international research organisation as well as private research organisation controlled by a public authority)
- PUBLIC** Research funders, ministries, regions, cities
- SMEs**
- OTHERS** Non-profit, associations, state companies etc.

GEOGRAPHICAL COVERAGE

