



## PEOPLE-CENTRIC SUSTAINABLE BUILT ENVIRONMENT



### MISSION AND VISION STATEMENT

The People-centric Sustainable Built Environment (Built4People) partnership brings together the whole value chain to accelerate people-centric innovation in the built environment towards sustainability. The three general objectives are:

- scientific – generate holistic innovation towards sustainability;
- economic – revitalise the sector through decarbonisation and sustainability transitions;
- societal – induce lasting behavioural change towards sustainable living.

The partnership will contribute to achieving the 2030 energy targets, leveraging on the European Renovation Wave strategy, the EU Circular Economy Action Plan and the Affordable Housing Initiative in line with the ambitions of the European Green Deal Action Plan and the new European Bauhaus initiative.

### KEY FACTS AND FIGURES

**Horizon Europe Pillar and Cluster:** Pillar II – Cluster 5 Climate, energy and mobility

**Type of partnership:** Co-programmed

**Coordinating entity:** ECTP and WGBC

**Total estimated budget:** EUR 780 m

**EU commitments:** EUR 380 m

**Partners' commitments:** EUR 400 m

**Predecessor under Horizon 2020:** Energy-efficient Buildings (EeB) cPPP

### FIND OUT MORE

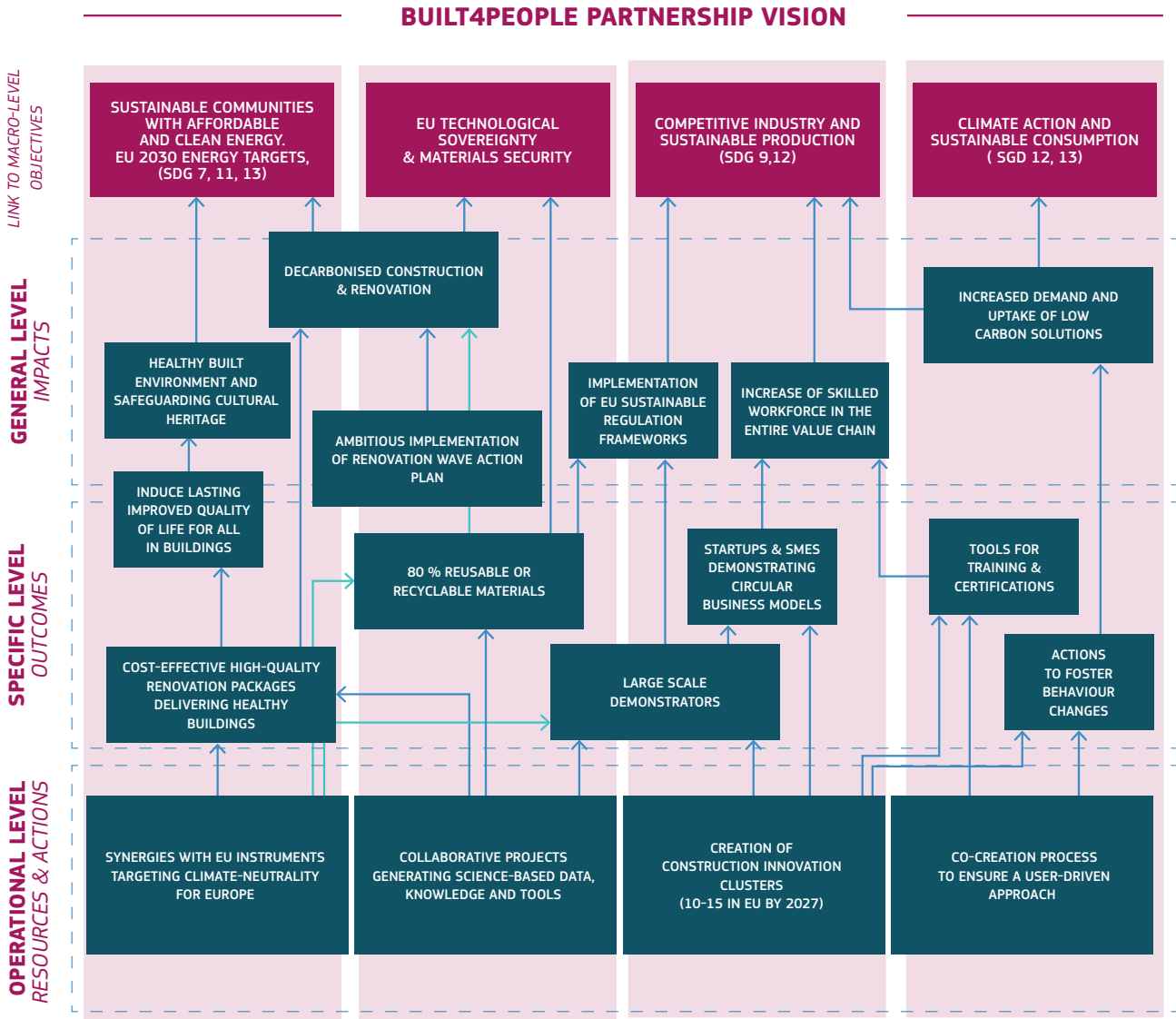
[www.ectp.org](http://www.ectp.org)

<https://www.worldgbc.org/our-regional-networks/europe>

✉ [secretariat@ectp.org](mailto:secretariat@ectp.org)



**PARTNERSHIP SPECIFIC IMPACT PATHWAY (PSIP)**





**PARTNERSHIP'S KEY PERFORMANCE INDICATORS**

KPI NAME	UNIT OF MEASUREMENT	BASELINE	TARGET 2023	TARGET 2025	TARGET 2027	AMBITION >2027
<b>RESOURCES (INPUT), PROCESSES AND ACTIVITIES</b>						
Established innovation clusters	#	N/A	3	6	10-15	
Inclusion of building users and occupants	# involved in demonstration	N/A	TBD	TBD	600*	
<b>OUTCOMES</b>						
Low carbon solutions & renovation packages	#	TBD	TBD	TBD	100**	
Certification & verification tools	# developed	TBD	TBD	TBD	20***	
Training capacity (in hours per year)	#	TBD	TBD	TBD	3000****	
<b>IMPACTS</b>						
New skills creation	#	N/A	TBD	TBD	30*****	
Sustainable & healthy neighbourhoods	% of B4P projects with demonstrated impact	N/A	TBD	TBD	30%*****	
Healthy built environment	% of B4P projects with demonstrated health, social and wellbeing	N/A	TBD	TBD	90%*****	
Safeguarding cultural heritage	% of B4P projects that demonstrate improved outcomes for heritage buildings	N/A	TBD	TBD	15%*****	

\* Target assumptions: 60 projects, each involving average 10 users per project

\*\* Target assumptions: 60 projects, 1-2 new solutions or packages per project

\*\*\*Target assumptions: 60 projects, one-third develop training or a new certification tool

\*\*\*\*Target assumptions: 60 projects, each delivering average annual training capacity to roll out relevant new content to 50 people per annum

\*\*\*\*\*Target assumptions: average new jobs / skills per project: 0.5-1, anticipating ≈ 60 projects considering a whole B4P budget of EUR 380 million.

\*\*\*\*\*Target assumptions: 30% of projects will demonstrate health impacts, including at neighbourhood level

\*\*\*\*\* Target assumptions: given the people-centric nature of the partnership, all projects should be aiming to hit this, hence a high target is appropriate – but recognises that some projects may not achieve their stated goals

\*\*\*\*\*Target assumptions: 10-15% of projects address heritage buildings

More detailed information on the partnership's activities, performance and impacts is found in activity reports available here

Baselining exercises will be done during 2022 by a dedicated working group. Data from the predecessor partnership, EeB cPPP, will be used as much as is relevant to calculate the baseline and will then be further complemented with other sources as necessary.



## SYNERGIES WITH OTHER EUROPEAN AND NATIONAL INITIATIVES

### CREATING THE BUILT ENVIRONMENT SECTOR ECOSYSTEM

Built4People's predecessor EeB cPPP had a strategic positioning during 2014–2020 and established synergies with several European initiatives. These included SET-Plan and the European Innovation Partnership on Smart Cities and its sustainable built-environment action cluster. In addition it built collaboration with complementary European associations. This resulted in the creation of a European built environment ecosystem with a wide stakeholder base from a scattered industry, providing an EU barometer of R&I priorities for the sector. Built4People will build on these synergies and strengthened it with WGBC's European regional network.

[Link to common indicators #2, #11](#)

### SYNERGIES CREATED WITH THE SET-PLAN

Built4People intends to collaborate closely with Member States and Associated Countries through the newly created states' representative group (SRG). The aim is to facilitate alignment between the SRIA partnership and the relevant national programmes and policies.

One specific priority will be to support the objectives of the EU policy framework on buildings, building on the work carried out in the SET-Plan and its [implementation working group 5](#) (energy-efficient buildings). The SET-Plan IWG5 chair is invited as an observer to the board of the partnership in order to support the alignment of the specific objectives and anticipated outputs of the Built4People partnership with the IWG5 implementation plan and contribute to the SET-Plan's objectives on renovation.

[Link to common indicators #10, #13](#)

### SYNERGIES WITH OTHER EUROPEAN PARTNERSHIPS

Built4People intends to develop synergies with 4 other Horizon Europe partnerships:

- Clean Energy transition (CET)
- Driving Urban Transitions (DUT)
- Process4Planet (P4P)
- Made in Europe (MiE)

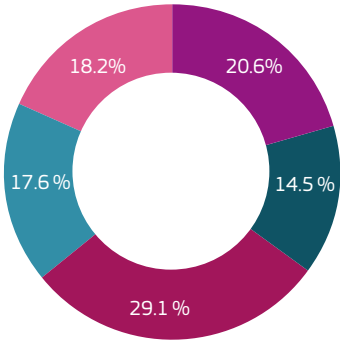
Alignment with P4P and the MiE will be considered in relation to the transformation of the building sector (construction 4.0), industrialisation and mass customisation, the supply chains and the integration of the waste streams of different industrial sectors and the development of circular economy models, new RES energy generation and energy efficiency. Links with the CET and DUT partnerships will be built on interactions with the SET-Plan.

[Link to common indicator #8](#)



**OVERVIEW OF MEMBERS**

**MEMBERS PER TYPE**



- INDUSTRY** Other Industrial and/or profit Private organisation
- UNIVERSITY** University and other higher education organisations
- RESEARCH** Public research organisation (including international research organisation as well as private research organisation controlled by a public authority)
- SMEs**
- OTHERS** Non-profit, associations, state companies etc.

**GEOGRAPHICAL COVERAGE**

