



# Marie Skłodowska-Curie Actions

## Matinée d'information nationale Staff Exchanges

1 December 2021

### The Actions

#### The MSCA have **5** main actions

**Doctoral Networks**  
implement doctoral programmes (including joint doctorates and industrial doctorates) by international partnerships of organisations from different sectors. They train highly-skilled doctoral candidates, stimulate their creativity, enhance their innovation capacities and boost their employability in the long-term.

#### Postdoctoral Fellowships

support researchers' careers and foster excellence in research and innovation. Researchers holding a PhD can carry out their research activities, acquire new skills and develop their careers abroad, whilst developing competences in non-academic sectors and working within interdisciplinary teams.

#### Staff Exchanges

encourage short-term international and inter-sectoral exchanges of research and innovation staff through sustainable, collaborative projects in Europe and beyond. By doing so, they enhance knowledge and skills transfer and increase organisations' research and innovation capacities.

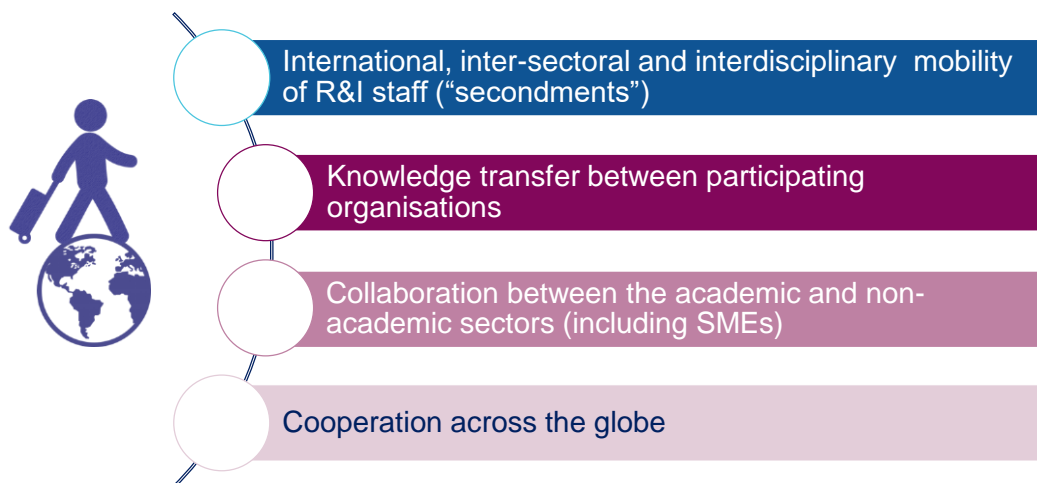
**MSCA and Citizens**  
brings research and researchers closer to children, families and the public at large through the European Researchers' Night - the annual research communication and promotion event taking place at the end of September across EU Member States and Horizon Europe Associated Countries.

#### COFUND

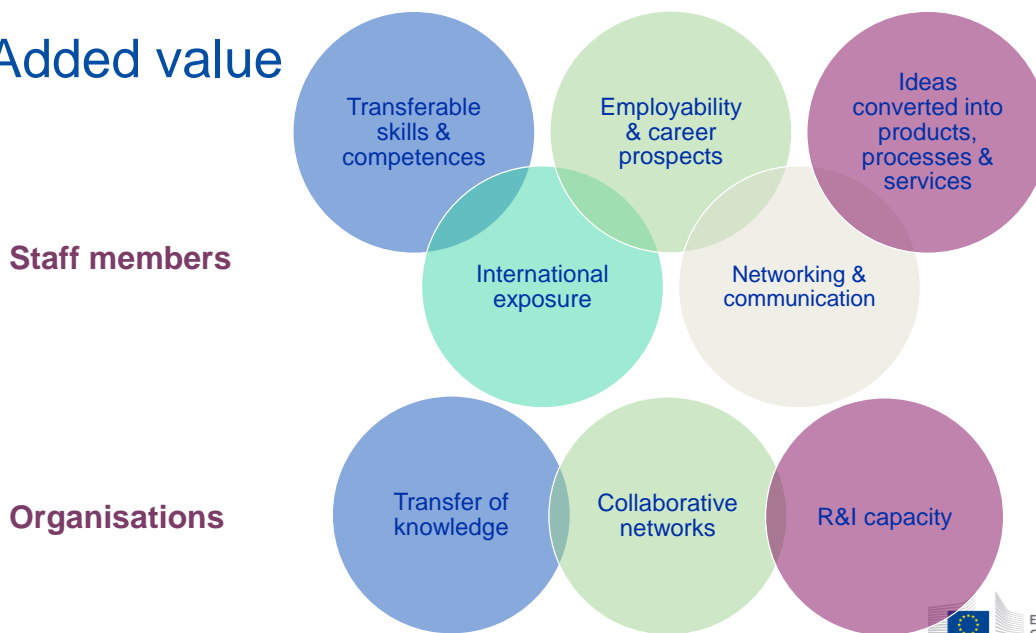
co-finance regional, national and international doctoral and postdoctoral programmes for researchers' training and career development. The COFUND action spreads MSCA's best practices by setting high standards and excellent working conditions, and boosts training and international, interdisciplinary and inter-sectoral mobility.



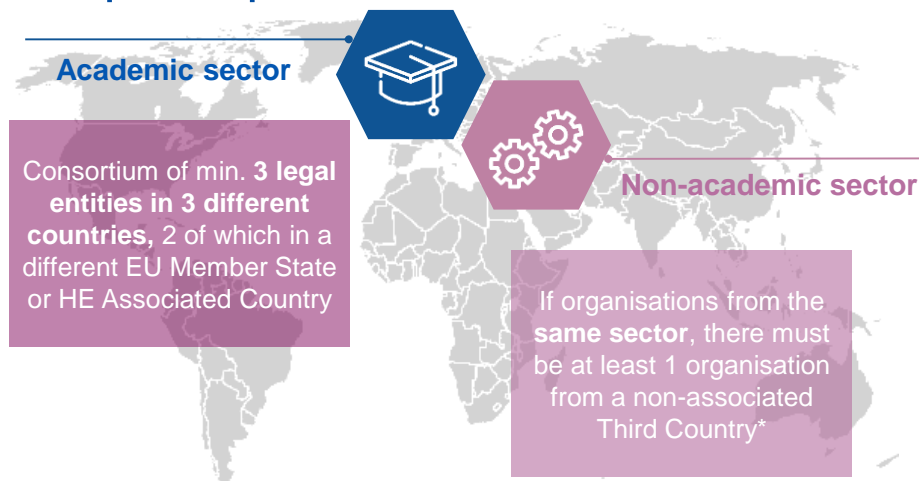
## Objectives



## Added value



## Eligible participants



\* Secondments within EU MS or HE AC must be between different sectors (between academic and non-academic), except for interdisciplinary secondments, which must be limited to a maximum of 1/3 of the total implemented months.



## Eligible staff



### Seconded staff members



Any type of staff involved in R&I activities (researchers, administrative staff, managerial staff, technical staff)

Researchers at any career stage (from doctoral candidates to postdoctoral researchers)

Actively engaged in research and/or innovation activities for at least **1 month** prior at the sending institution

Each staff member is seconded for a period of **1 to 12 months** (may be split into several stays)


Staff needs to be devoted **full-time** to the action during the secondment

After the secondment, staff should **return to their sending institution**



## Eligible exchanges

		"HOSTING" (receiving seconded staff members)		
		Academic organisation in MS/AC (1)	Non-academic organisation in MS/AC (2)	Organisation in TC*
"SENDING" (seconding staff members from organisation)	Academic organisation in MS/AC (1)	1/3	✓	✓
	Non-academic organisation in MS/AC (2)	✓	1/3	✓
	Organisation in TC*	✓	✓	✗

 This symbol refers to same sector secondments up to 1/3 of the total implemented secondments funded by the EU as long as they are demonstrated to be interdisciplinary.

\* denotes TC partners that are eligible for automatic funding



## Same-sector secondments in Europe (MS/AC)



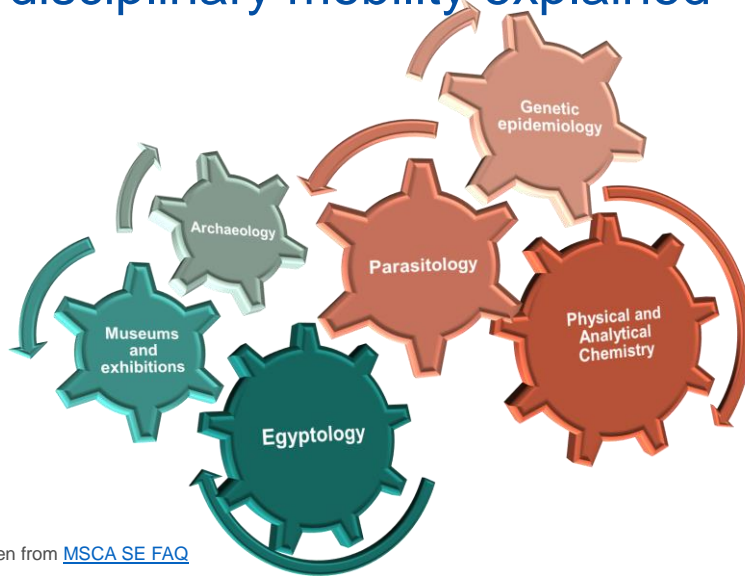
≤ 1/3 of the total secondments funded by the EU, if considered **Interdisciplinary**

Interdisciplinary secondments integrate aspects from **two or more different scientific disciplines**.

Important: **scientific panels + descriptors/first level MSCA keywords** from proposal form part A (see [REA Website](https://www.rea.europa.eu/Website))



## Interdisciplinary mobility explained



Examples taken from [MSCA SE FAQ](#)



## What does Staff Exchanges fund?





# Focus on the proposal

## Proposal Submission



Funding & tender opportunities  
Single Electronic Data Interchange Area (SEDIA)

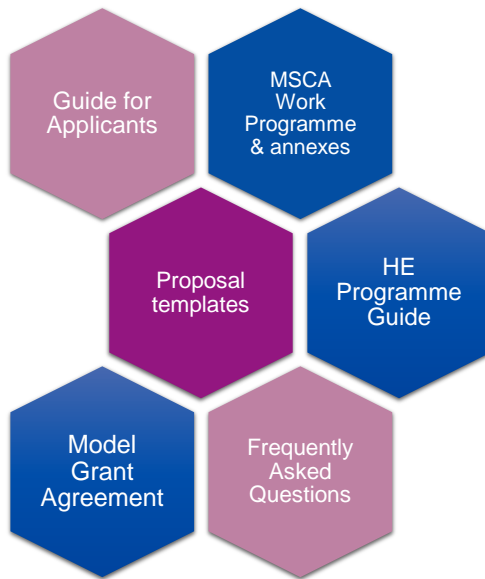


All calls are published on the **Funding and Tender Opportunities Portal**:

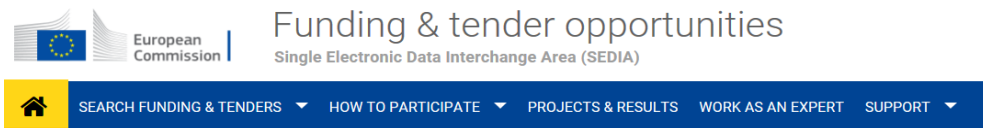
- Find your call
- Sign in to the portal and register your organisation (get a PIC number)
- Find partners
- Apply! <https://ec.europa.eu/info/funding-tenders/opportunities/portal/>



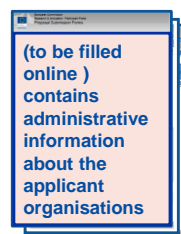
## Reference Documents



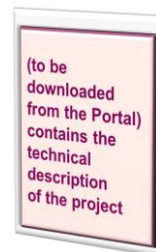
## Proposal documents



### Part A (structured data)



### Part B (description of action)



## Evaluation criteria

Excellence	Impact	Quality and efficiency of the implementation
Quality and pertinence of the project's <b>research and innovation objectives</b> (and the extent to which they are ambitious, and go beyond the state of the art)	Developing new and lasting <b>research collaborations</b> , achieving <b>transfer of knowledge</b> between participating organisations and contributing to improving <b>research and innovation potential</b> at the European and global level	Quality and effectiveness of the <b>work plan</b> , assessment of <b>risks</b> , and appropriateness of the effort assigned to work packages
Soundness of the <b>proposed methodology</b> (including i3 approaches, consideration of the gender dimension and other diversity aspects, and the quality of open science practices)	Credibility of the measures to enhance the <b>career perspectives</b> of staff members and contribution to their <b>skills development</b>	Quality, capacity and role of each participant, including <b>hosting arrangements</b> and extent to which the consortium as a whole brings together the necessary expertise
Quality of the proposed <b>interaction between the participating organisations</b> in light of the research and innovation objectives	Suitability and quality of the measures to <b>maximise expected outcomes and impacts</b> , as set out in the dissemination and exploitation plan, including communication activities  The magnitude and importance of the project's contribution to the expected <b>scientific, societal and economic impacts</b>	
50%	30%	20%



## Evaluation

### Formula for Staff Exchanges success stories

$$\text{Globe with people icons} = (E + I) \text{Impact}$$

**E**xcellence and **I**mplementation are closely interlinked!







## Recommended Guidelines in the HE Work programme

Horizon Europe Work Programme :

*“All MSCA-funded projects are encouraged to follow the recommendations outlined in the **Guidelines for MSCA supervision**”.*

A set of recommendations to be adopted on a best effort basis by participants in the programme – both individuals and institutions – e.g. from research support and career development to well-being, conflict resolution and training for supervisors.

<https://ec.europa.eu/research/mariecurieactions/about-msca/msca-guidelines-supervision>



## Recommended Guidelines in the HE Work programme

Horizon Europe Work Programme :

*“All MSCA-funded projects are encouraged to address the principles of the **MSCA Green Charter** and implement measures to minimize the environmental footprint of their activities”.*

<https://ec.europa.eu/research/mariecurieactions/green-charter>



## Tips and tricks

### Closely follow the call requirements

Be in line with the action's objectives and expected outcomes

### Follow available guidelines

Use the structure provided in the template and address all the evaluation criteria

### Highlight the EU dimension

Show that your proposal addresses EU policy priorities and/or societal challenges

### Get a second opinion

Have your proposal proof-read by a colleague and pre-screened by your NCP

### Sustainability of collaboration

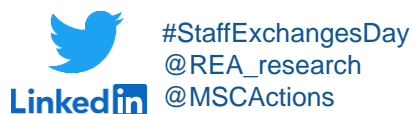
Describe the benefits of cooperation and how they can go beyond this project

### Contact your National Contact Point (NCP)



## Next MSCA SE calls

Call	2021		Call	2022	
	Opening Closing	Budget (M€)		Opening Closing	Budget (M€)
Staff Exchanges	07/10/2021 09/03/2022	72,5	Staff Exchanges	06/10/2022 08/03/2023	77,5





# Questions and answers



## Thank you



© European Union 2020

Unless otherwise noted the reuse of this presentation is authorised under the [CC BY 4.0](https://creativecommons.org/licenses/by/4.0/) license. For any use or reproduction of elements that are not owned by the EU, permission may need to be sought directly from the respective right holders.

Slides 3,5,6,8,10,15,16: elements concerned, source: flaticon

